

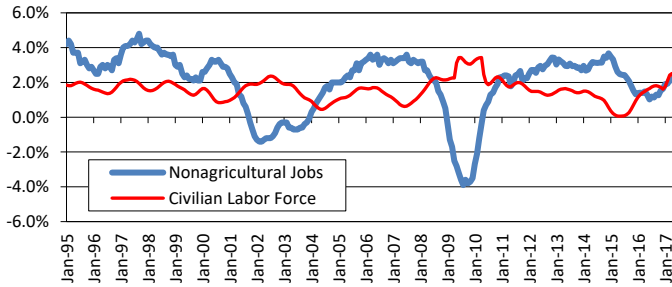
Texas Nonagricultural Employment Summary

Total Nonagricultural Wage and Salary employment rose by 400 jobs in December on the heels of a revised gain of 53,600 jobs in November. Five of eleven major industries experienced over-the-month job growth, led by the Leisure and Hospitality industry, which added 6,800 jobs in December. Total Nonfarm employment expanded by 306,900 jobs over the year, while the annual growth rate dropped 0.2 percentage points in December to 2.5 percent. Professional and Business Services led all major industries in annual growth with the addition of 52,600 jobs.

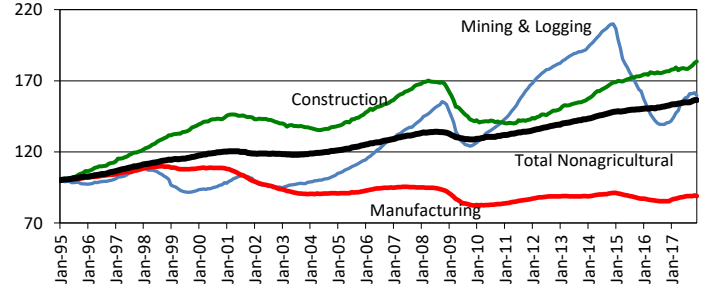
Texas Labor Force Summary

The Texas seasonally adjusted unemployment rate rose 0.1 percentage points to reach 3.9 percent in December, and the rate has fallen 0.9 percentage points over the year. The U.S. rate remained steady at 4.1 percent in December and has fallen 0.6 percentage points over the year. The Texas Civilian Labor Force grew by 66,800 persons in December for a fourth straight month of growth. The number of employed increased by 56,800 workers, while the number of unemployed rose by 10,100 persons. The Texas CLF grew by 186,200 persons over the year.

Total Nonagricultural Jobs vs. Civilian Labor Force (Over-the-Year Percent Change)



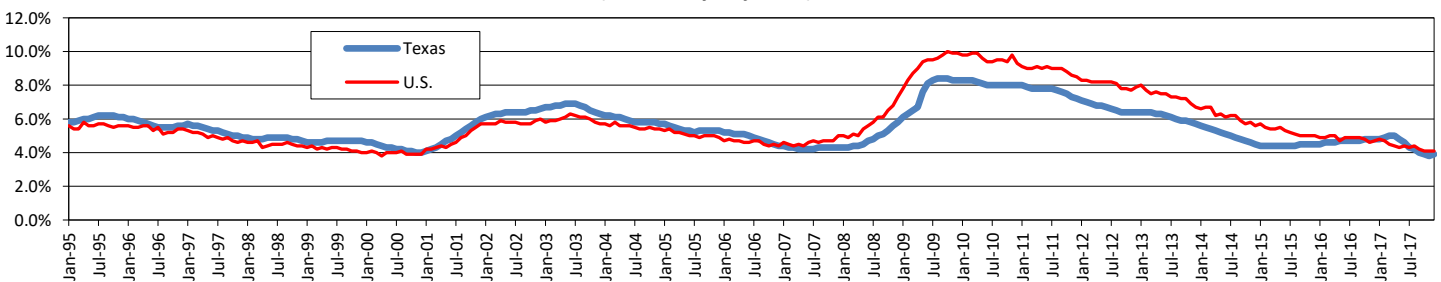
Goods Producing Sector Index, 1995=100



TEXAS NONAGRICULTURAL WAGE AND SALARY EMPLOYMENT SEASONALLY ADJUSTED

INDUSTRY TITLE	Dec 2017	Nov 2017	Dec 2016	Nov '17 to Dec '17		Dec '16 to Dec '17	
				Absolute Change	Percent Change	Absolute Change	Percent Change
Total Nonagricultural	12,444,700	12,444,300	12,137,800	400	0.0	306,900	2.5
Total Private	10,466,900	10,470,800	10,197,400	-3,900	0.0	269,500	2.6
Goods-Producing	1,856,400	1,857,700	1,763,100	-1,300	-0.1	93,300	5.3
Mining and Logging	245,400	248,600	216,300	-3,200	-1.3	29,100	13.5
Construction	732,800	728,500	704,900	4,300	0.6	27,900	4.0
Manufacturing	878,200	880,600	841,900	-2,400	-0.3	36,300	4.3
Service-Providing	10,588,300	10,586,600	10,374,700	1,700	0.0	213,600	2.1
Trade, Transportation, and Utilities	2,460,000	2,470,500	2,446,700	-10,500	-0.4	13,300	0.5
Information	192,100	188,500	201,300	3,600	1.9	-9,200	-4.6
Financial Activities	765,200	767,300	739,100	-2,100	-0.3	26,100	3.5
Professional and Business Services	1,699,800	1,700,100	1,647,200	-300	0.0	52,600	3.2
Education and Health Services	1,689,300	1,689,800	1,658,600	-500	0.0	30,700	1.9
Leisure and Hospitality	1,355,000	1,348,200	1,312,600	6,800	0.5	42,400	3.2
Other Services	449,100	448,700	428,800	400	0.1	20,300	4.7
Government	1,977,800	1,973,500	1,940,400	4,300	0.2	37,400	1.9

Texas and U.S. Unemployment Rates (Seasonally Adjusted)



TEXAS AND U.S. CIVILIAN LABOR FORCE ESTIMATES (Seasonally Adjusted)

	TEXAS				UNITED STATES				
	CLF	EMP	UNEMP	RATE	CLF	EMP	UNEMP	RATE	
Dec '17	13,547,000	13,024,800	522,200	3.9	Dec '17	160,597,000	154,021,000	6,576,000	4.1
Nov '17	13,480,200	12,968,000	512,100	3.8	Nov '17	160,533,000	153,917,000	6,616,000	4.1
Dec '16	13,360,800	12,723,300	637,600	4.8	Dec '16	159,640,000	152,111,000	7,529,000	4.7