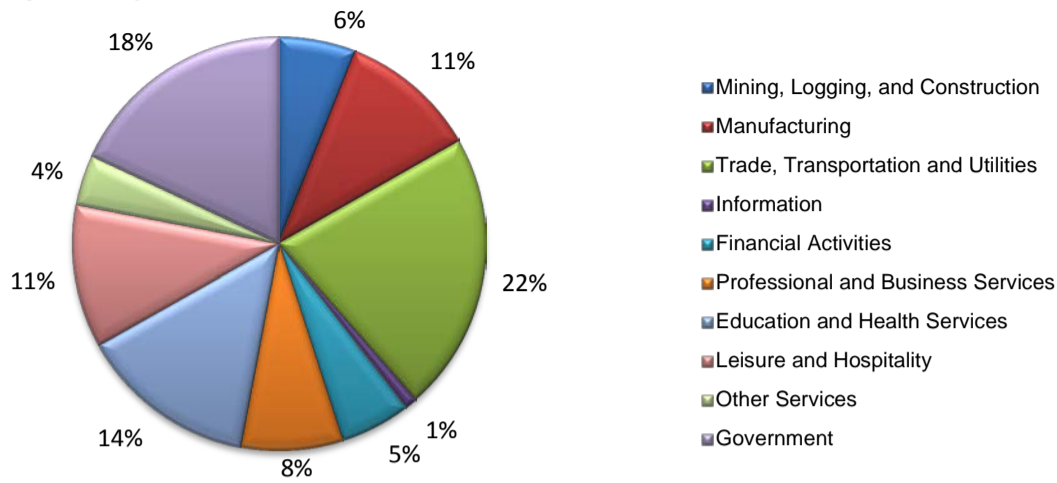
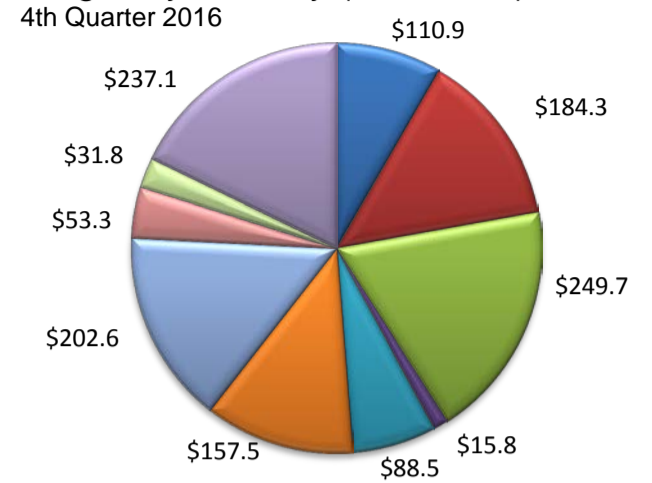


(Armstrong, Carson, Oldham, Potter, Randall)

Industry Composition



Wages by Industry (in millions)



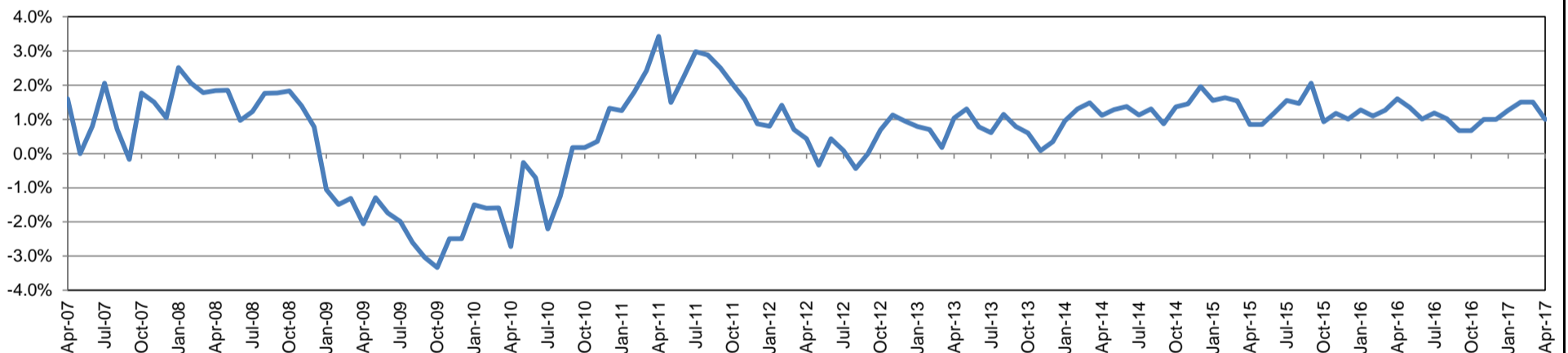
Employment by Industry

	Apr-17	Mar-17	Apr-16	Monthly Change		Annual Change	
				Actual	%	Actual	%
Total Nonfarm	121,900	121,800	120,700	100	0.1%	1,200	1.0%
Mining, Logging, and Construction	7,300	7,300	6,900	0	0.0%	400	5.8%
Manufacturing	13,100	13,100	12,800	0	0.0%	300	2.3%
Trade, Transportation, and Utilities	26,600	26,600	26,400	0	0.0%	200	0.8%
Information	1,200	1,200	1,300	0	0.0%	-100	-7.7%
Financial Activities	6,700	6,700	6,600	0	0.0%	100	1.5%
Professional and Business Services	9,700	9,900	9,800	-200	-2.0%	-100	-1.0%
Education and Health Services	16,900	17,000	16,600	-100	-0.6%	300	1.8%
Leisure and Hospitality	13,600	13,300	13,600	300	2.3%	0	0.0%
Other Services	4,800	4,800	4,900	0	0.0%	-100	-2.0%
Government	22,000	21,900	21,800	100	0.5%	200	0.9%

Industry Size Class

Size Class	Employees per firm	Number of Firms	December 2016		
			Employment in Size Class	% Total Employment	
9	1000+	15	32,607	28.0%	
8	500-999	11	7,634	6.6%	
7	250-499	22	7,503	6.4%	
6	100-249	106	15,484	13.3%	
5	50-99	207	14,253	12.2%	
4	20-49	542	16,560	14.2%	
3	10-19	740	10,098	8.7%	
2	5-9	1,026	6,886	5.9%	
1	1-4	2,706	5,379	4.6%	
0	0	468	0	0.0%	
Total			5,843	116,404	100.0%

Annual Growth Rate for Total Nonagricultural Employment



Unemployment Information (all estimates in thousands)

	Amarillo MSA				Texas (Actual)				United States (Actual)			
	C.L.F.	Emp.	Unemp.	Rate	C.L.F.	Emp.	Unemp.	Rate	C.L.F.	Emp.	Unemp.	Rate
Apr-17	133.4	129.3	4.1	3.0	13,506.7	12,895.0	611.7	4.5	159,817.0	153,262.0	6,555.0	4.1
Mar-17	133.7	129.0	4.7	3.5	13,514.6	12,838.9	675.6	5.0	159,912.0	152,628.0	7,284.0	4.6
Apr-16	131.9	128.3	3.6	2.7	13,236.9	12,672.9	564.0	4.3	158,488.0	151,075.0	7,413.0	4.7

Historical Unemployment Rates

