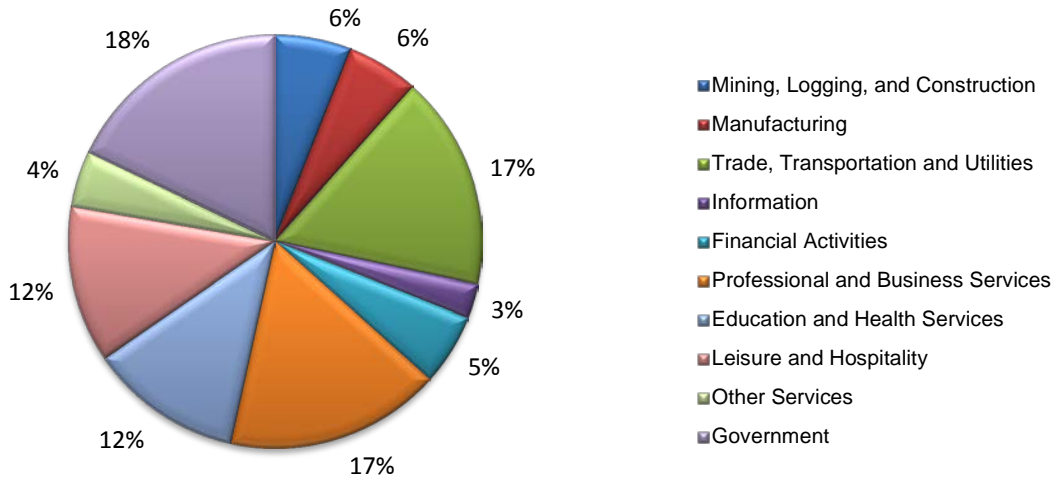
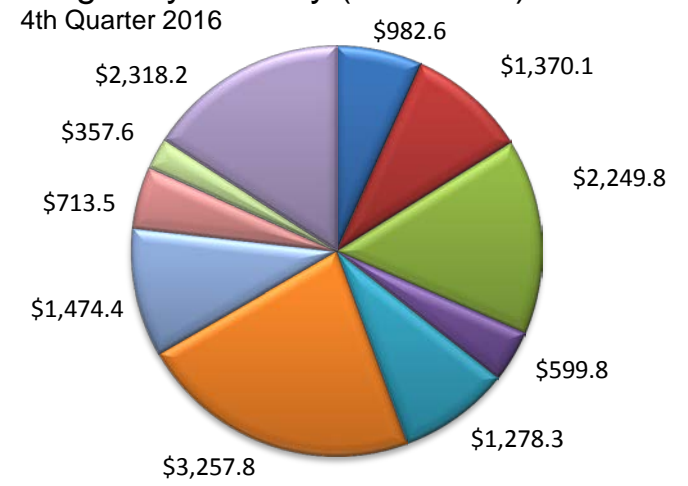


(Bastrop, Caldwell, Hays, Travis, Williamson)

Industry Composition



Wages by Industry (in millions)



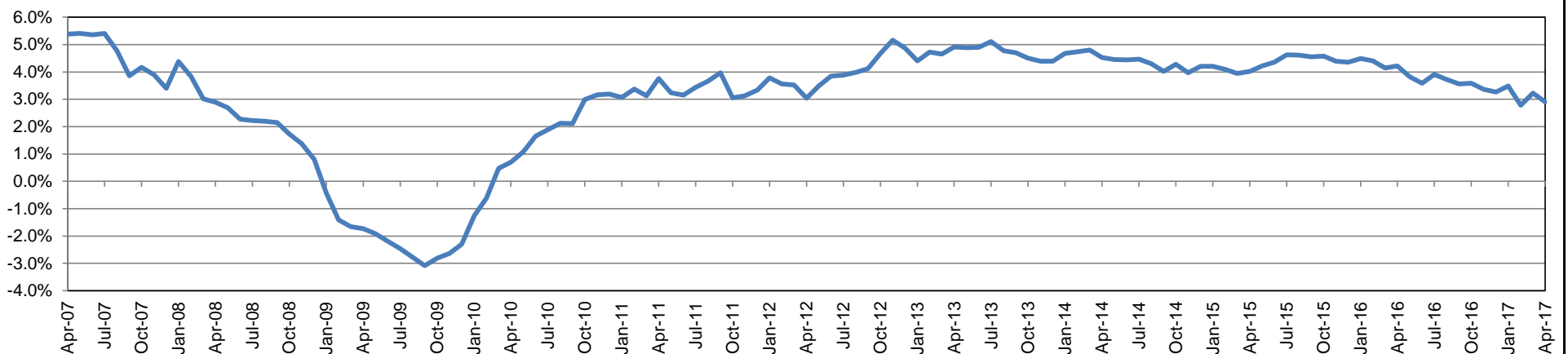
Employment by Industry

	Apr-17	Mar-17	Apr-16	Monthly Change		Annual Change	
				Actual	%	Actual	%
Total Nonfarm	1,024,500	1,020,600	995,600	3,900	0.4%	28,900	2.9%
Mining, Logging, and Construction	60,800	60,900	58,000	-100	-0.2%	2,800	4.8%
Manufacturing	57,700	57,100	55,400	600	1.1%	2,300	4.2%
Trade, Transportation, and Utilities	171,600	171,900	169,100	-300	-0.2%	2,500	1.5%
Information	27,900	28,100	28,300	-200	-0.7%	-400	-1.4%
Financial Activities	57,200	56,600	56,100	600	1.1%	1,100	2.0%
Professional and Business Services	172,600	171,400	168,000	1,200	0.7%	4,600	2.7%
Education and Health Services	122,500	121,500	115,600	1,000	0.8%	6,900	6.0%
Leisure and Hospitality	125,800	124,800	122,200	1,000	0.8%	3,600	3.0%
Other Services	45,000	44,700	43,000	300	0.7%	2,000	4.7%
Government	183,400	183,600	179,900	-200	-0.1%	3,500	2.0%

Industry Size Class

Size Class	Employees per firm	Number of Firms	December 2016		
			Employment in Size Class	% Total Employment	
9	1000+	101	287,639	29.6%	
8	500-999	127	88,776	9.1%	
7	250-499	286	97,735	10.1%	
6	100-249	923	140,357	14.4%	
5	50-99	1,355	94,239	9.7%	
4	20-49	3,645	111,271	11.4%	
3	10-19	4,802	65,219	6.7%	
2	5-9	6,685	44,125	4.5%	
1	1-4	23,102	42,856	4.4%	
0	0	5,779	0	0.0%	
Total			46,805	972,217	100.0%

Annual Growth Rate for Total Nonagricultural Employment



Unemployment Information (all estimates in thousands)

	Austin-Round Rock MSA				Texas (Actual)				United States (Actual)			
	C.L.F.	Emp.	Unemp.	Rate	C.L.F.	Emp.	Unemp.	Rate	C.L.F.	Emp.	Unemp.	Rate
Apr-17	1,137.0	1,100.9	36.1	3.2	13,506.7	12,895.0	611.7	4.5	159,817.0	153,262.0	6,555.0	4.1
Mar-17	1,136.8	1,095.5	41.3	3.6	13,514.6	12,838.9	675.6	5.0	159,912.0	152,628.0	7,284.0	4.6
Apr-16	1,103.5	1,071.7	31.8	2.9	13,236.9	12,672.9	564.0	4.3	158,488.0	151,075.0	7,413.0	4.7

Historical Unemployment Rates

