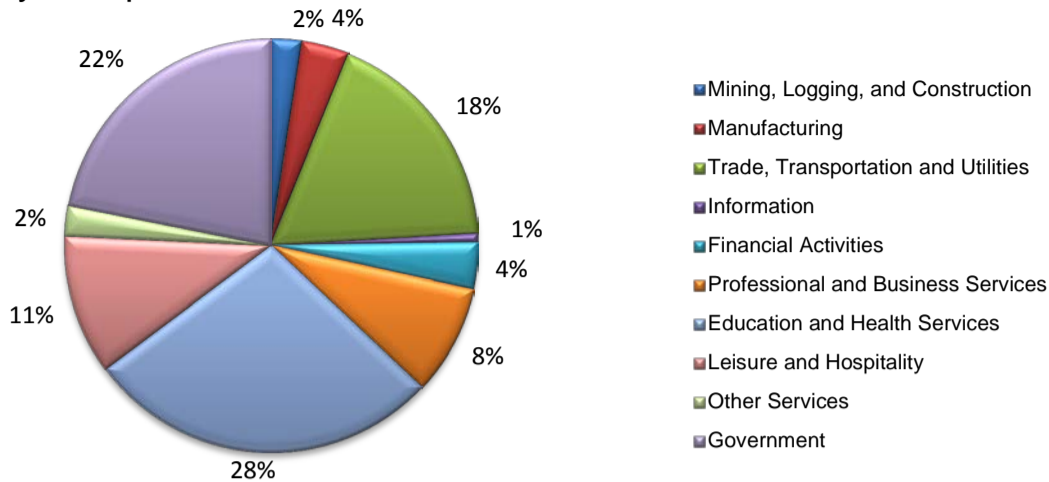
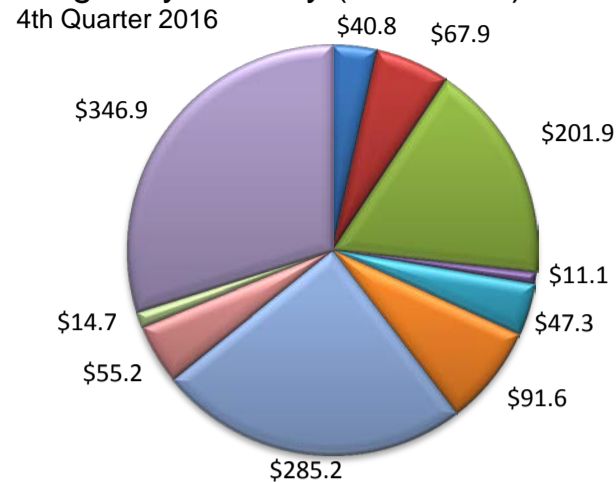


(Cameron)

Industry Composition



Wages by Industry (in millions)



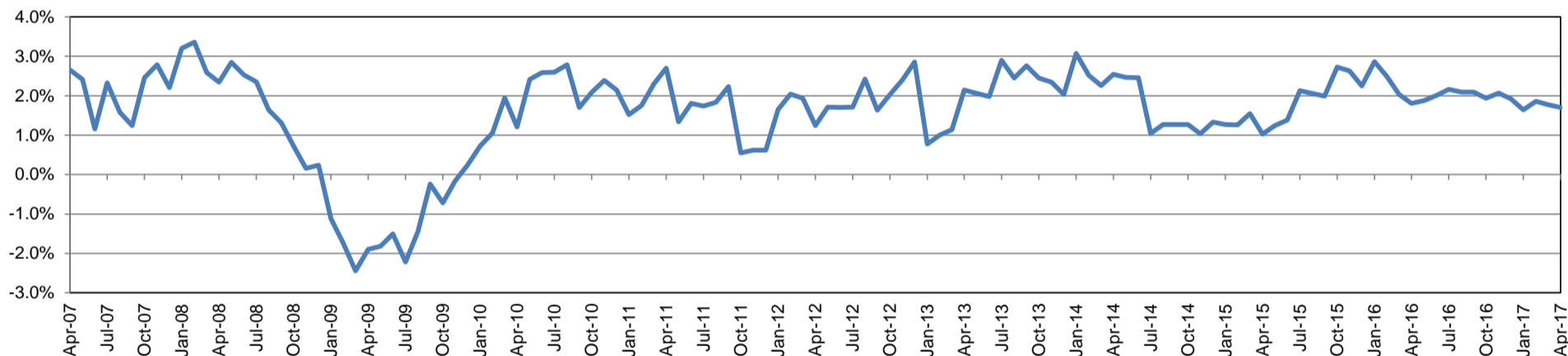
Employment by Industry

	Apr-17	Mar-17	Apr-16	Monthly Change		Annual Change	
				Actual	%	Actual	%
Total Nonfarm	143,300	143,300	140,900	0	0.0%	2,400	1.7%
Mining, Logging, and Construction	3,400	3,200	3,000	200	6.3%	400	13.3%
Manufacturing	5,300	5,400	5,600	-100	-1.9%	-300	-5.4%
Trade, Transportation, and Utilities	25,800	26,200	26,300	-400	-1.5%	-500	-1.9%
Information	1,000	1,000	1,000	0	0.0%	0	0.0%
Financial Activities	5,200	5,200	5,200	0	0.0%	0	0.0%
Professional and Business Services	12,300	12,400	11,900	-100	-0.8%	400	3.4%
Education and Health Services	39,900	39,800	38,400	100	0.3%	1,500	3.9%
Leisure and Hospitality	15,600	15,500	15,100	100	0.7%	500	3.3%
Other Services	3,400	3,300	3,200	100	3.0%	200	6.3%
Government	31,400	31,300	31,200	100	0.3%	200	0.6%

Industry Size Class

Size Class	Employees per firm	Number of Firms	December 2016		
			Employment in Size Class	% Total Employment	
9	1000+	18	38,739	27.6%	
8	500-999	26	16,719	11.9%	
7	250-499	41	14,261	10.1%	
6	100-249	148	22,209	15.8%	
5	50-99	187	12,881	9.2%	
4	20-49	464	14,053	10.0%	
3	10-19	729	9,980	7.1%	
2	5-9	996	6,610	4.7%	
1	1-4	2,437	5,074	3.6%	
0	0	423	0	0.0%	
Total			5,469	140,526	100.0%

Annual Growth Rate for Total Nonagricultural Employment



Unemployment Information (all estimates in thousands)

	Brownsville-Harlingen MSA				Texas (Actual)				United States (Actual)			
	C.L.F.	Emp.	Unemp.	Rate	C.L.F.	Emp.	Unemp.	Rate	C.L.F.	Emp.	Unemp.	Rate
Apr-17	168.8	156.1	12.6	7.5	13,506.7	12,895.0	611.7	4.5	159,817.0	153,262.0	6,555.0	4.1
Mar-17	169.5	156.1	13.4	7.9	13,514.6	12,838.9	675.6	5.0	159,912.0	152,628.0	7,284.0	4.6
Apr-16	165.5	154.3	11.2	6.8	13,236.9	12,672.9	564.0	4.3	158,488.0	151,075.0	7,413.0	4.7

Historical Unemployment Rates

