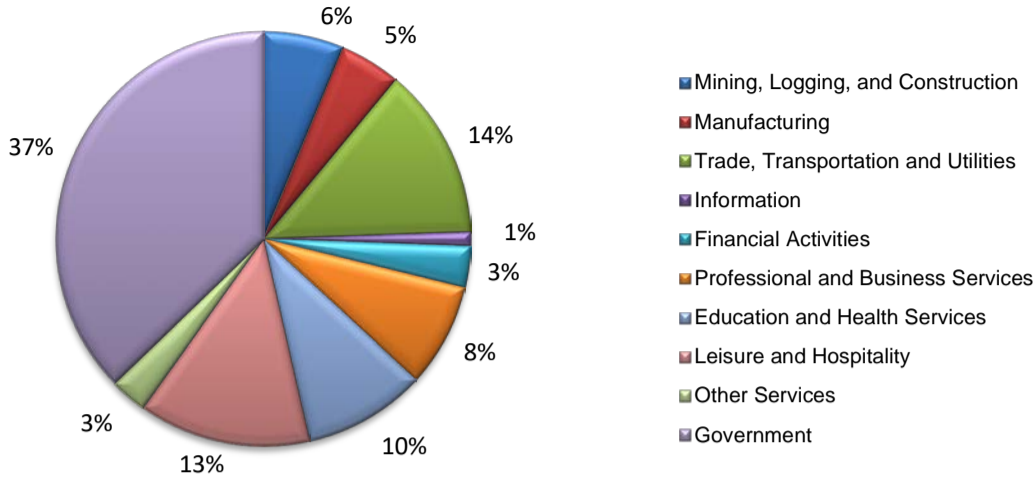
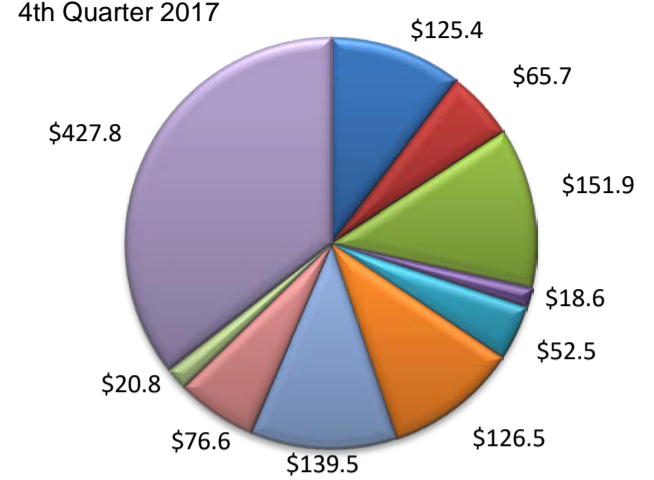


(Brazos, Burluson, Robertson)

Industry Composition



Wages by Industry (in millions)



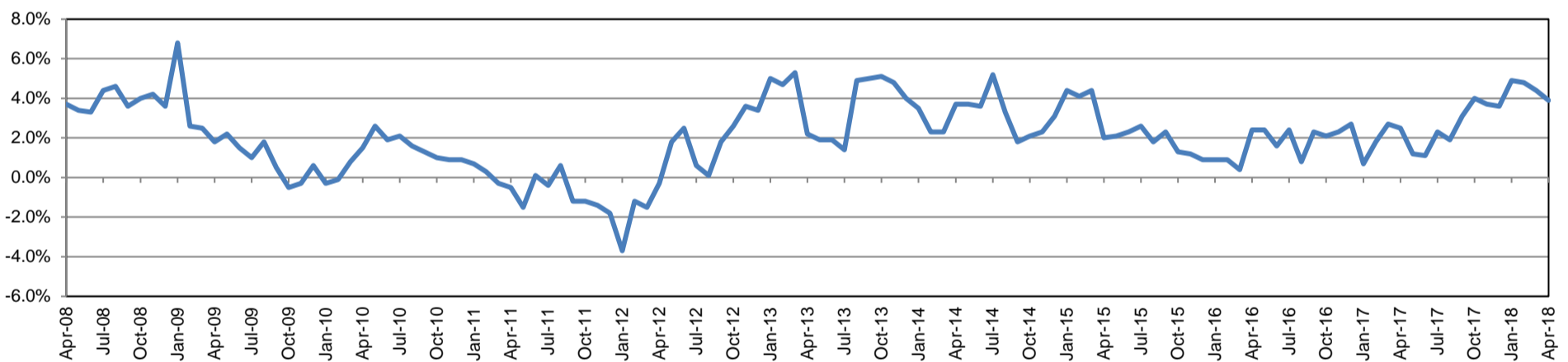
Employment by Industry

	Apr-18	Mar-18	Apr-17	Monthly Change		Annual Change	
				Actual	%	Actual	%
Total Nonfarm	121,300	122,500	116,800	-1,200	-1.0%	4,500	3.9%
Mining, Logging and Construction	7,600	7,600	7,500	0	0.0%	100	1.3%
Manufacturing	5,800	5,700	5,500	100	1.8%	300	5.5%
Trade, Transportation, and Utilities	16,300	16,300	16,200	0	0.0%	100	0.6%
Information	1,300	1,300	1,300	0	0.0%	0	0.0%
Financial Activities	3,900	3,900	3,800	0	0.0%	100	2.6%
Professional and Business Services	9,800	9,600	9,100	200	2.1%	700	7.7%
Education and Health Services	11,600	11,500	11,400	100	0.9%	200	1.8%
Leisure and Hospitality	16,300	16,400	14,800	-100	-0.6%	1,500	10.1%
Other Services	3,500	3,500	3,400	0	0.0%	100	2.9%
Government	45,200	46,700	43,800	-1,500	-3.2%	1,400	3.2%

Industry Size Class

Size Class	Employees per firm	Number of Firms	December 2017		
			Employment in Size Class	% Total Employment	
9	1000+	12	36,330	31.9%	
8	500-999	9	6,523	5.7%	
7	250-499	30	10,367	9.1%	
6	100-249	107	15,248	13.4%	
5	50-99	188	12,961	11.4%	
4	20-49	454	13,943	12.2%	
3	10-19	656	8,891	7.8%	
2	5-9	834	5,551	4.9%	
1	1-4	2,008	4,093	3.6%	
0	0	420	0	0.0%	
Total			4,718	113,907	100.0%

Annual Growth Rate for Total Nonagricultural Employment



Unemployment Information (all estimates in thousands)

	College Station-Bryan MSA				Texas (Actual)				United States (Actual)			
	C.L.F.	Emp.	Unemp.	Rate	C.L.F.	Emp.	Unemp.	Rate	C.L.F.	Emp.	Unemp.	Rate
Apr-18	134.2	130.5	3.7	2.7	13,860.3	13,340.2	520.2	3.8	161,280.0	155,348.0	5,932.0	3.7
Mar-18	135.7	131.6	4.1	3.0	13,836.5	13,267.1	569.4	4.1	161,548.0	154,877.0	6,671.0	4.1
Apr-17	129.3	125.6	3.7	2.9	13,527.2	12,967.8	559.4	4.1	159,817.0	153,262.0	6,555.0	4.1

Historical Unemployment Rates

