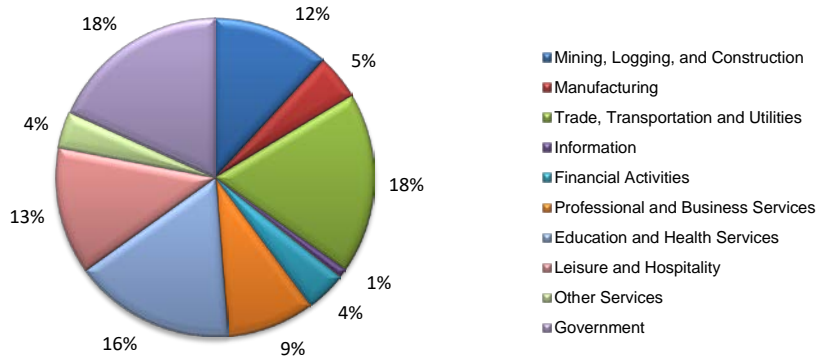
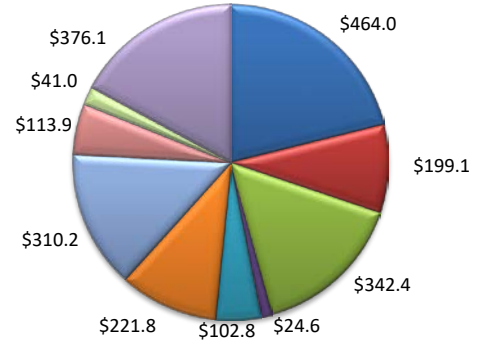


(Aransas, Nueces, San Patricio)

Industry Composition



Wages by Industry (in millions)  
2nd Quarter 2017



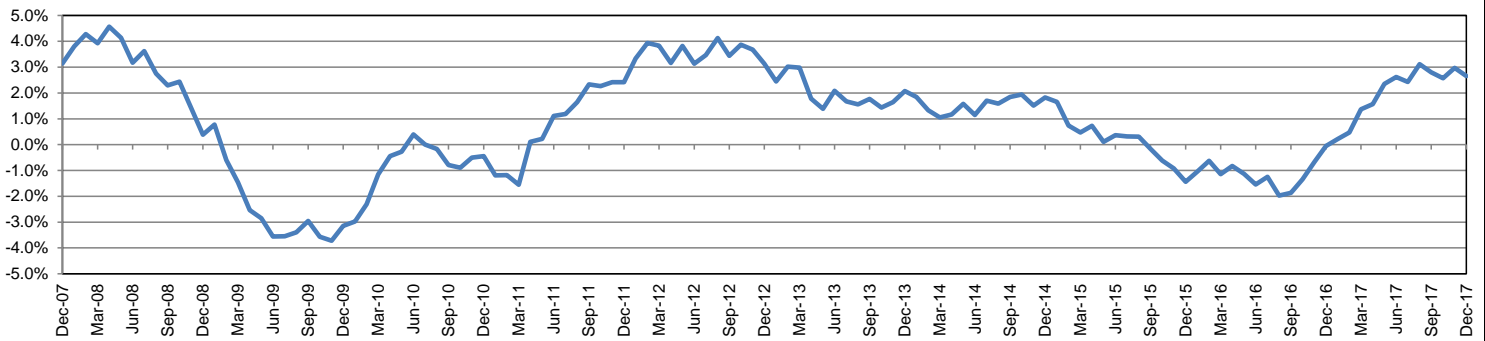
Employment by Industry

				Monthly Change		Annual Change	
	Dec-17	Nov-17	Dec-16	Actual	%	Actual	%
	Dec-17	Nov-17	Dec-16	Actual	%	Actual	%
Total Nonfarm	197,300	197,300	192,200	0	0.0%	5,100	2.7%
Mining, Logging, and Construction	23,300	23,600	21,800	-300	-1.3%	1,500	6.9%
Manufacturing	9,100	9,000	8,800	100	1.1%	300	3.4%
Trade, Transportation, and Utilities	36,200	36,300	35,300	-100	-0.3%	900	2.5%
Information	1,800	1,800	1,800	0	0.0%	0	0.0%
Financial Activities	8,100	7,900	7,700	200	2.5%	400	5.2%
Professional and Business Services	17,700	17,800	16,600	-100	-0.6%	1,100	6.6%
Education and Health Services	32,300	32,000	31,900	300	0.9%	400	1.3%
Leisure and Hospitality	25,400	25,500	25,500	-100	-0.4%	-100	-0.4%
Other Services	7,300	7,300	7,200	0	0.0%	100	1.4%
Government	36,100	36,100	35,600	0	0.0%	500	1.4%

Industry Size Class

Size Class	Employees per firm	Number of Firms	June 2017	
			Employment in Size Class	% Total Employment
9	1000+	21	49,532	26.1%
8	500-999	16	11,154	5.9%
7	250-499	51	17,911	9.4%
6	100-249	224	33,502	17.6%
5	50-99	285	19,997	10.5%
4	20-49	825	25,475	13.4%
3	10-19	1,110	15,211	8.0%
2	5-9	1,508	9,987	5.3%
1	1-4	3,493	7,203	3.8%
0	0	717	0	0.0%
Total		8,250	189,972	100.0%

Annual Growth Rate for Total Nonagricultural Employment



Unemployment Information (all estimates in thousands)

	Corpus Christi MSA				Texas (Actual)				United States (Actual)			
	C.L.F.	Emp.	Unemp.	Rate	C.L.F.	Emp.	Unemp.	Rate	C.L.F.	Emp.	Unemp.	Rate
Dec-17	209.7	198.8	10.9	5.2	13,545.3	13,044.0	501.3	3.7	159,880.0	153,602.0	6,278.0	3.9
Nov-17	209.3	198.2	11.1	5.3	13,500.9	13,001.6	499.3	3.7	160,466.0	154,180.0	6,286.0	3.9
Dec-16	206.0	193.2	12.8	6.2	13,353.3	12,747.3	606.0	4.5	158,968.0	151,798.0	7,170.0	4.5

Historical Unemployment Rates

