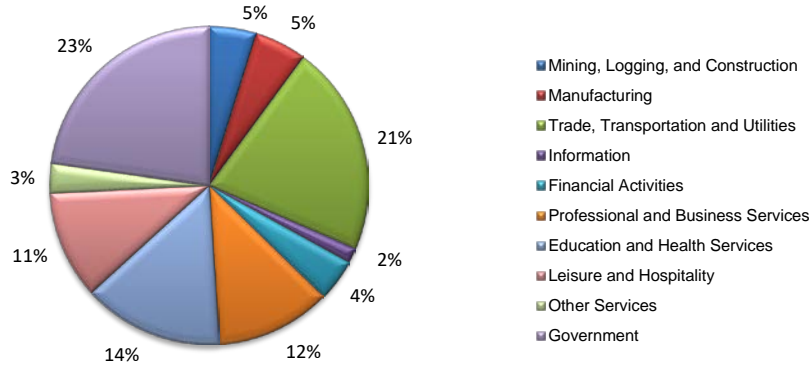
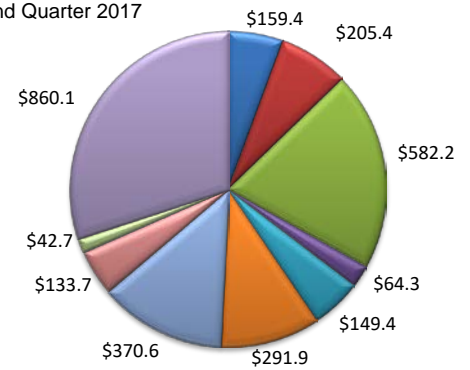


(El Paso, Hudspeth)

Industry Composition



Wages by Industry (in millions)  
2nd Quarter 2017



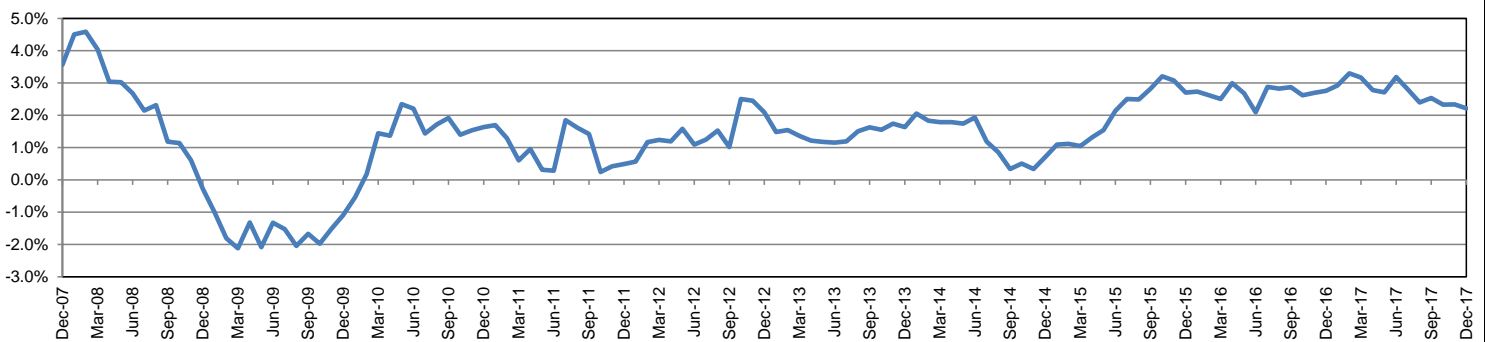
Employment by Industry

				Monthly Change		Annual Change	
	Dec-17	Nov-17	Dec-16	Actual	%	Actual	%
<b>Total Nonfarm</b>	<b>323,300</b>	<b>323,400</b>	<b>316,300</b>	<b>-100</b>	<b>0.0%</b>	<b>7,000</b>	<b>2.2%</b>
Mining, Logging, and Construction	15,500	15,700	14,800	-200	-1.3%	700	4.7%
Manufacturing	17,100	16,800	16,900	300	1.8%	200	1.2%
Trade, Transportation, and Utilities	69,000	69,200	70,000	-200	-0.3%	-1,000	-1.4%
Information	5,000	4,800	5,000	200	4.2%	0	0.0%
Financial Activities	13,800	13,700	13,100	100	0.7%	700	5.3%
Professional and Business Services	38,000	37,900	35,100	100	0.3%	2,900	8.3%
Education and Health Services	46,100	46,100	44,800	0	0.0%	1,300	2.9%
Leisure and Hospitality	35,500	35,900	34,400	-400	-1.1%	1,100	3.2%
Other Services	9,700	9,700	9,500	0	0.0%	200	2.1%
Government	73,600	73,600	72,700	0	0.0%	900	1.2%

Industry Size Class

Size Class	Employees per firm	Number of Firms	June 2017	
			Employment in Size Class	% Total Employment
9	1000+	30	86,357	28.7%
8	500-999	42	27,749	9.2%
7	250-499	97	33,206	11.0%
6	100-249	302	47,600	15.8%
5	50-99	393	27,060	9.0%
4	20-49	1,102	33,667	11.2%
3	10-19	1,458	19,585	6.5%
2	5-9	2,117	14,120	4.7%
1	1-4	5,596	11,580	3.8%
0	0	1,210	0	0.0%
<b>Total</b>		<b>12,347</b>	<b>300,924</b>	<b>100.0%</b>

Annual Growth Rate for Total Nonagricultural Employment



Unemployment Information (all estimates in thousands)

	El Paso MSA				Texas (Actual)				United States (Actual)			
	C.L.F.	Emp.	Unemp.	Rate	C.L.F.	Emp.	Unemp.	Rate	C.L.F.	Emp.	Unemp.	Rate
Dec-17	360.2	345.8	14.5	4.0	13,545.3	13,044.0	501.3	3.7	159,880.0	153,602.0	6,278.0	3.9
Nov-17	359.9	345.5	14.4	4.0	13,500.9	13,001.6	499.3	3.7	160,466.0	154,180.0	6,286.0	3.9
Dec-16	354.3	337.3	17.0	4.8	13,353.3	12,747.3	606.0	4.5	158,968.0	151,798.0	7,170.0	4.5

Historical Unemployment Rates

