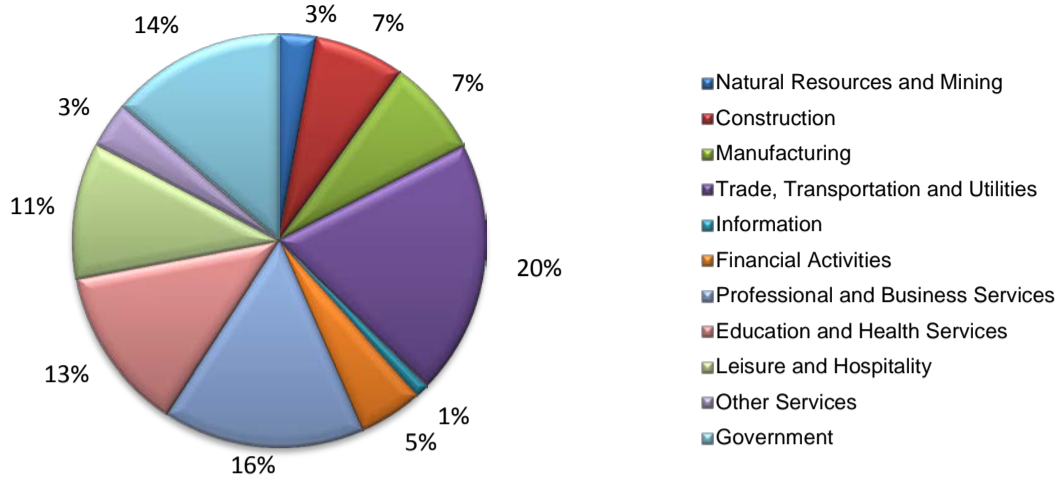


Houston-The Woodlands-Sugar Land MSA

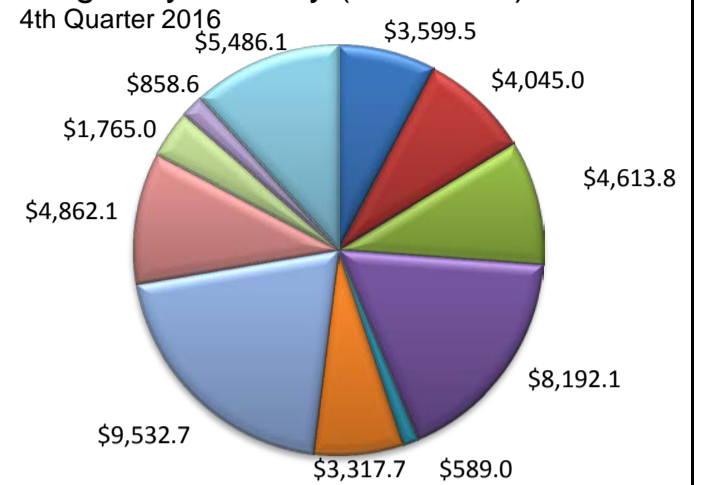
April 2017

(Austin, Brazoria, Chambers, Fort Bend, Galveston, Harris, Liberty, Montgomery, Waller)

Industry Composition



Wages by Industry (in millions)



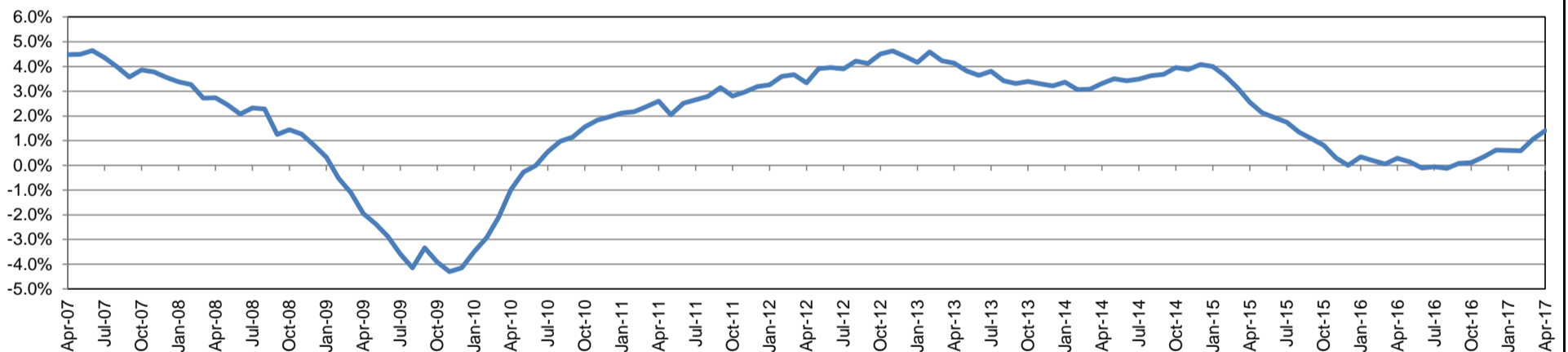
Employment by Industry

	Apr-17	Mar-17	Apr-16	Monthly Change		Annual Change	
				Actual	%	Actual	%
Total Nonfarm	3,042,800	3,024,100	3,000,900	18,700	0.6%	41,900	1.4%
Mining and Logging	87,600	87,300	90,000	300	0.3%	-2,400	-2.7%
Construction	213,800	217,900	221,400	-4,100	-1.9%	-7,600	-3.4%
Manufacturing	229,900	227,500	224,800	2,400	1.1%	5,100	2.3%
Trade, Transportation, and Utilities	604,400	600,200	606,300	4,200	0.7%	-1,900	-0.3%
Information	32,100	32,500	32,400	-400	-1.2%	-300	-0.9%
Financial Activities	153,500	153,900	154,200	-400	-0.3%	-700	-0.5%
Professional and Business Services	479,700	472,700	467,900	7,000	1.5%	11,800	2.5%
Education and Health Services	390,500	387,900	377,800	2,600	0.7%	12,700	3.4%
Leisure and Hospitality	323,500	318,800	312,400	4,700	1.5%	11,100	3.6%
Other Services	109,900	108,300	108,100	1,600	1.5%	1,800	1.7%
Government	417,900	417,100	405,600	800	0.2%	12,300	3.0%

Industry Size Class

Size Class	Employees per firm	Number of Firms	Employment in Size Class	% Total Employment
9	1000+	341	1,046,625	36.2%
8	500-999	393	270,249	9.3%
7	250-499	803	277,314	9.6%
6	100-249	2,394	367,579	12.7%
5	50-99	3,454	240,336	8.3%
4	20-49	9,232	281,053	9.7%
3	10-19	12,220	165,308	5.7%
2	5-9	18,927	124,805	4.3%
1	1-4	63,159	121,219	4.2%
0	0	12,905	0	0.0%
Total		123,828	2,894,488	100.0%

Annual Growth Rate for Total Nonagricultural Employment



Unemployment Information (all estimates in thousands)

	Houston-The Woodlands-Sugar Land MSA				Texas (Actual)				United States (Actual)			
	C.L.F.	Emp.	Unemp.	Rate	C.L.F.	Emp.	Unemp.	Rate	C.L.F.	Emp.	Unemp.	Rate
Apr-17	3,337.0	3,161.2	175.8	5.3	13,506.7	12,895.0	611.7	4.5	159,817.0	153,262.0	6,555.0	4.1
Mar-17	3,328.9	3,138.9	190.0	5.7	13,514.6	12,838.9	675.6	5.0	159,912.0	152,628.0	7,284.0	4.6
Apr-16	3,278.1	3,119.4	158.7	4.8	13,236.9	12,672.9	564.0	4.3	158,488.0	151,075.0	7,413.0	4.7

Historical Unemployment Rates

