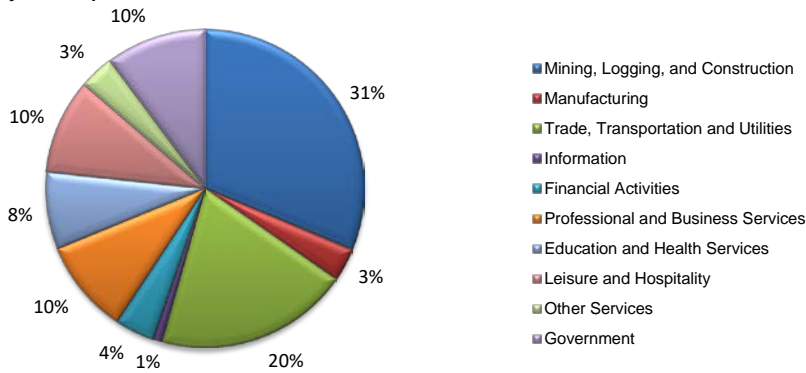
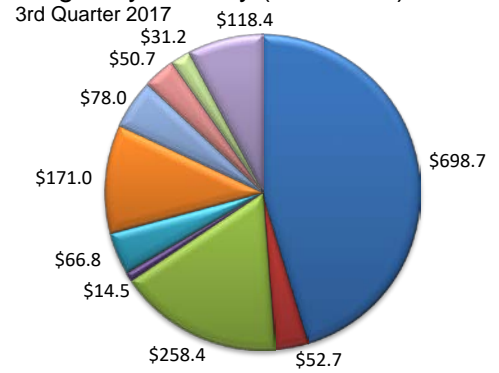


(Martin, Midland)

Industry Composition



Wages by Industry (in millions)



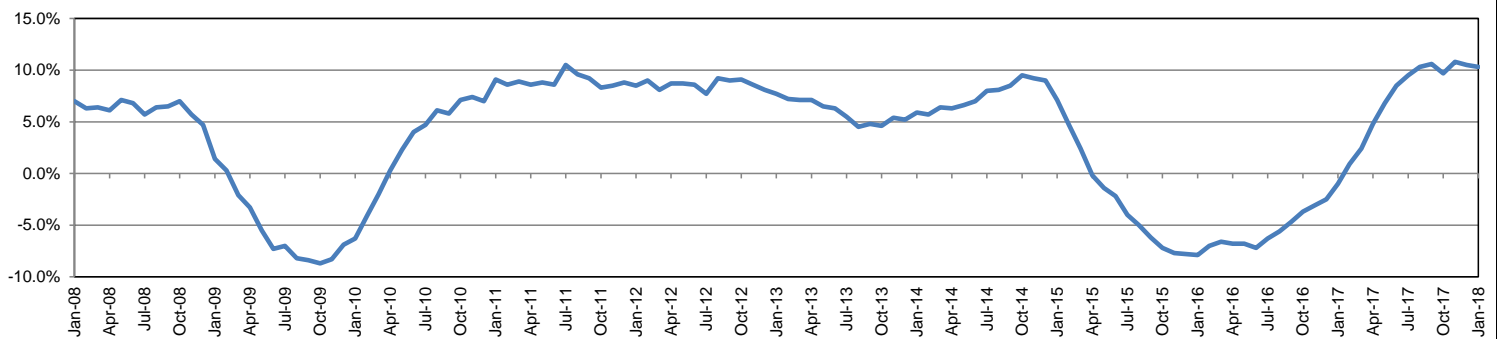
Employment by Industry

	Jan-18	Dec-17	Jan-17	Monthly Change		Annual Change	
				Actual	%	Actual	%
Total Nonfarm	97,300	97,800	88,200	-500	-0.5%	9,100	10.3%
Mining, Logging and Construction	30,400	30,000	24,500	400	1.3%	5,900	24.1%
Manufacturing	3,300	3,300	3,000	0	0.0%	300	10.0%
Trade, Transportation, and Utilities	19,200	19,600	18,200	-400	-2.0%	1,000	5.5%
Information	900	1,000	900	-100	-10.0%	0	0.0%
Financial Activities	3,900	4,000	3,600	-100	-2.5%	300	8.3%
Professional and Business Services	9,300	9,300	8,800	0	0.0%	500	5.7%
Education and Health Services	7,600	7,600	7,400	0	0.0%	200	2.7%
Leisure and Hospitality	9,400	9,600	8,600	-200	-2.1%	800	9.3%
Other Services	3,400	3,400	3,200	0	0.0%	200	6.3%
Government	9,900	10,000	10,000	-100	-1.0%	-100	-1.0%

Industry Size Class

Size Class	Employees per firm	Number of Firms	September 2017	
			Employment in Size Class	% Total Employment
9	1000+	5	8,126	8.7%
8	500-999	14	9,766	10.4%
7	250-499	23	7,614	8.1%
6	100-249	117	17,696	18.9%
5	50-99	216	15,170	16.2%
4	20-49	563	16,843	18.0%
3	10-19	588	8,084	8.6%
2	5-9	862	5,694	6.1%
1	1-4	2,189	4,475	4.8%
0	0	524	0	0.0%
Total		5,101	93,468	100.0%

Annual Growth Rate for Total Nonagricultural Employment



Unemployment Information (all estimates in thousands)

	Midland MSA				Texas (Actual)				United States (Actual)			
	C.L.F.	Emp.	Unemp.	Rate	C.L.F.	Emp.	Unemp.	Rate	C.L.F.	Emp.	Unemp.	Rate
Jan-18	95.6	93.3	2.3	2.4	13,622.1	13,054.1	568.0	4.2	160,037.0	152,848.0	7,189.0	4.5
Dec-17	94.7	92.6	2.1	2.3	13,598.1	13,096.2	501.8	3.7	159,880.0	153,602.0	6,278.0	3.9
Jan-17	88.4	84.8	3.6	4.0	13,417.3	12,749.0	668.4	5.0	158,676.0	150,527.0	8,149.0	5.1

Historical Unemployment Rates

