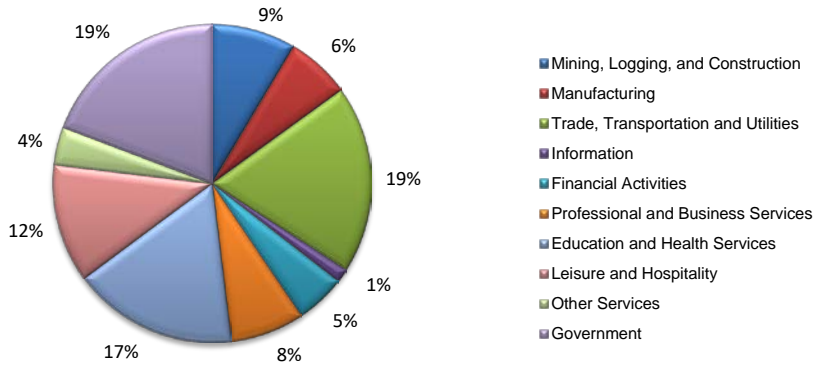
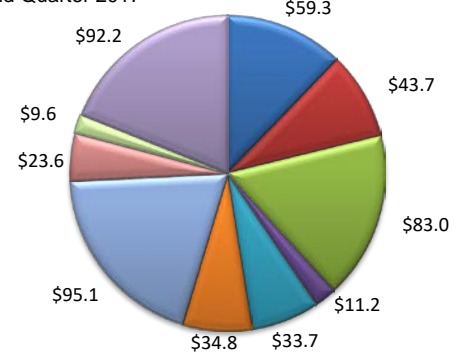


(Irlon, Tom Green)

Industry Composition



Wages by Industry (in millions)  
2nd Quarter 2017



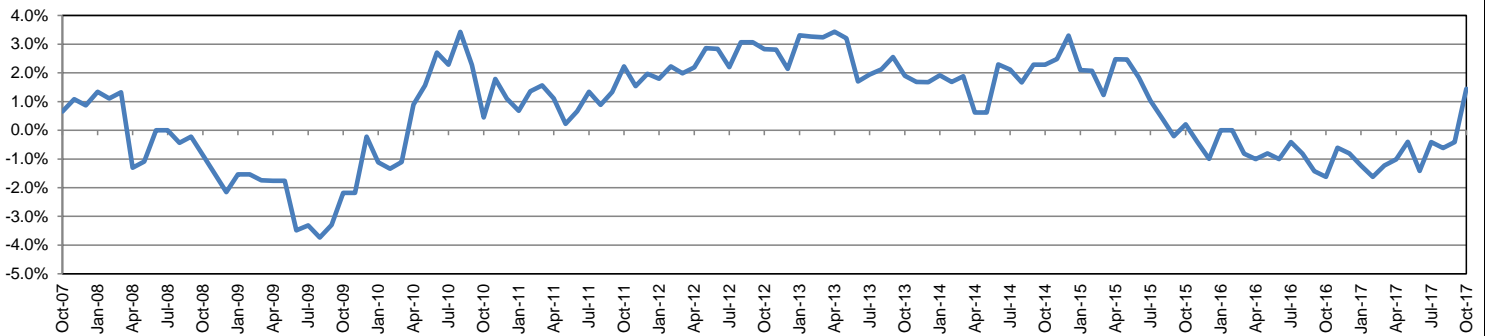
Employment by Industry

|                                      | Oct-17 | Sep-17 | Oct-16 | Monthly Change |       | Annual Change |       |
|--------------------------------------|--------|--------|--------|----------------|-------|---------------|-------|
|                                      |        |        |        | Actual         | %     | Actual        | %     |
|                                      |        |        |        |                |       |               |       |
| Total Nonfarm                        | 49,300 | 48,300 | 48,600 | 1,000          | 2.1%  | 700           | 1.4%  |
| Mining, Logging, and Construction    | 4,200  | 4,200  | 4,000  | 0              | 0.0%  | 200           | 5.0%  |
| Manufacturing                        | 3,200  | 3,300  | 3,200  | -100           | -3.0% | 0             | 0.0%  |
| Trade, Transportation, and Utilities | 9,400  | 9,300  | 9,300  | 100            | 1.1%  | 100           | 1.1%  |
| Information                          | 700    | 700    | 700    | 0              | 0.0%  | 0             | 0.0%  |
| Financial Activities                 | 2,500  | 2,500  | 2,500  | 0              | 0.0%  | 0             | 0.0%  |
| Professional and Business Services   | 3,700  | 3,600  | 3,600  | 100            | 2.8%  | 100           | 2.8%  |
| Education and Health Services        | 8,300  | 7,800  | 8,400  | 500            | 6.4%  | -100          | -1.2% |
| Leisure and Hospitality              | 5,900  | 5,900  | 5,700  | 0              | 0.0%  | 200           | 3.5%  |
| Other Services                       | 1,900  | 1,900  | 1,900  | 0              | 0.0%  | 0             | 0.0%  |
| Government                           | 9,500  | 9,100  | 9,300  | 400            | 4.4%  | 200           | 2.2%  |

Industry Size Class

| Size Class | Employees per firm | Number of Firms | June 2017                |                    |
|------------|--------------------|-----------------|--------------------------|--------------------|
|            |                    |                 | Employment in Size Class | % Total Employment |
| 9          | 1000+              | 3               | 5,487                    | 11.3%              |
| 8          | 500-999            | 10              | 7,340                    | 15.2%              |
| 7          | 250-499            | 12              | 3,518                    | 7.3%               |
| 6          | 100-249            | 48              | 7,652                    | 15.8%              |
| 5          | 50-99              | 97              | 6,704                    | 13.8%              |
| 4          | 20-49              | 251             | 7,648                    | 15.8%              |
| 3          | 10-19              | 318             | 4,325                    | 8.9%               |
| 2          | 5-9                | 478             | 3,172                    | 6.6%               |
| 1          | 1-4                | 1,238           | 2,565                    | 5.3%               |
| 0          | 0                  | 212             | 0                        | 0.0%               |
| Total      |                    | 2,667           | 48,411                   | 100.0%             |

Annual Growth Rate for Total Nonagricultural Employment



Unemployment Information (all estimates in thousands)

|        | San Angelo MSA |      |        |      | Texas (Actual) |          |        |      | United States (Actual) |           |         |      |
|--------|----------------|------|--------|------|----------------|----------|--------|------|------------------------|-----------|---------|------|
|        | C.L.F.         | Emp. | Unemp. | Rate | C.L.F.         | Emp.     | Unemp. | Rate | C.L.F.                 | Emp.      | Unemp.  | Rate |
| Oct-17 | 53.9           | 52.3 | 1.6    | 2.9  | 13,392.3       | 12,922.1 | 470.2  | 3.5  | 160,465.0              | 154,223.0 | 6,242.0 | 3.9  |
| Sep-17 | 53.8           | 52.0 | 1.8    | 3.3  | 13,498.7       | 12,954.8 | 543.9  | 4.0  | 161,049.0              | 154,494.0 | 6,556.0 | 4.1  |
| Oct-16 | 54.5           | 52.1 | 2.4    | 4.5  | 13,338.7       | 12,725.9 | 612.9  | 4.6  | 159,783.0              | 152,335.0 | 7,447.0 | 4.7  |

Historical Unemployment Rates

