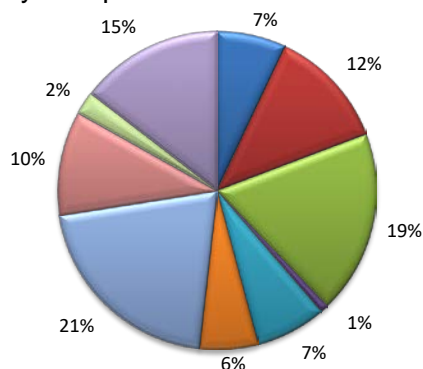


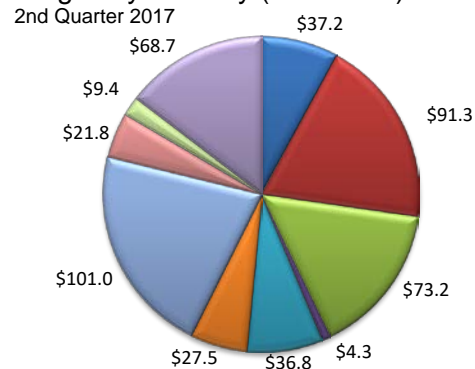
(Grayson)

Industry Composition



- Mining, Logging, and Construction
- Manufacturing
- Trade, Transportation and Utilities
- Information
- Financial Activities
- Professional and Business Services
- Education and Health Services
- Leisure and Hospitality
- Other Services
- Government

Wages by Industry (in millions)



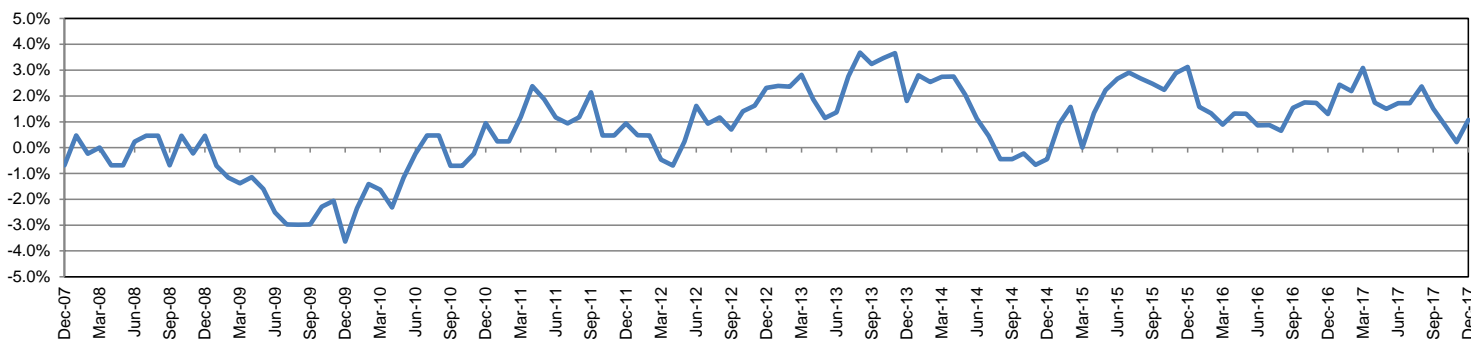
Employment by Industry

				Monthly Change		Annual Change	
	Dec-17	Nov-17	Dec-16	Actual	%	Actual	%
Total Nonfarm	47,300	47,200	46,800	100	0.2%	500	1.1%
Mining, Logging, and Construction	3,300	3,300	3,100	0	0.0%	200	6.5%
Manufacturing	5,800	5,700	5,700	100	1.8%	100	1.8%
Trade, Transportation, and Utilities	8,800	8,700	9,000	100	1.2%	-200	-2.2%
Information	400	400	400	0	0.0%	0	0.0%
Financial Activities	3,400	3,400	3,200	0	0.0%	200	6.3%
Professional and Business Services	2,800	2,700	2,800	100	3.7%	0	0.0%
Education and Health Services	9,800	9,700	9,500	100	1.0%	300	3.2%
Leisure and Hospitality	5,000	5,100	5,200	-100	-2.0%	-200	-3.8%
Other Services	1,100	1,200	1,100	-100	-8.3%	0	0.0%
Government	6,900	7,000	6,800	-100	-1.4%	100	1.5%

Industry Size Class

Size Class	Employees per firm	Number of Firms	June 2017	
			Employment in Size Class	% Total Employment
9	1000+	6	7,468	16.2%
8	500-999	4	2,626	5.7%
7	250-499	16	5,371	11.6%
6	100-249	51	7,613	16.5%
5	50-99	84	5,753	12.4%
4	20-49	254	7,489	16.2%
3	10-19	321	4,395	9.5%
2	5-9	418	2,792	6.0%
1	1-4	1,417	2,726	5.9%
0	0	190	0	0.0%
Total		2,761	46,233	100.0%

Annual Growth Rate for Total Nonagricultural Employment



Unemployment Information (all estimates in thousands)

	Sherman-Denison MSA				Texas (Actual)				United States (Actual)			
	C.L.F.	Emp.	Unemp.	Rate	C.L.F.	Emp.	Unemp.	Rate	C.L.F.	Emp.	Unemp.	Rate
Dec-17	61.5	59.6	1.8	3.0	13,545.3	13,044.0	501.3	3.7	159,880.0	153,602.0	6,278.0	3.9
Nov-17	61.4	59.5	1.9	3.1	13,500.9	13,001.6	499.3	3.7	160,466.0	154,180.0	6,286.0	3.9
Dec-16	61.0	58.8	2.2	3.6	13,353.3	12,747.3	606.0	4.5	158,968.0	151,798.0	7,170.0	4.5

Historical Unemployment Rates

