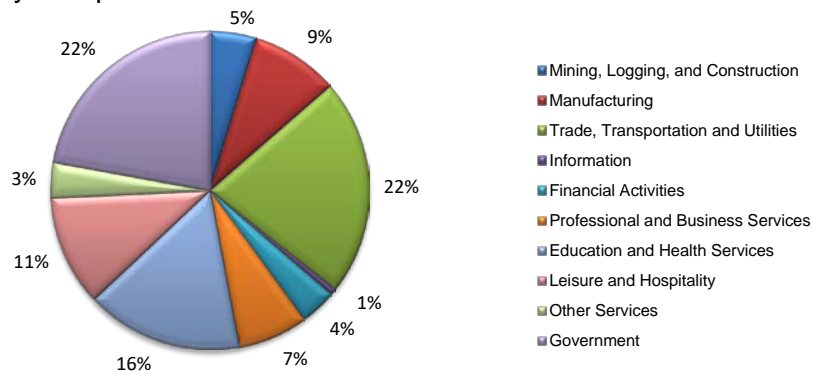


(Bowie County, TX and Little River County, Miller County, AR)

Industry Composition



Wages by Industry (in millions)\*



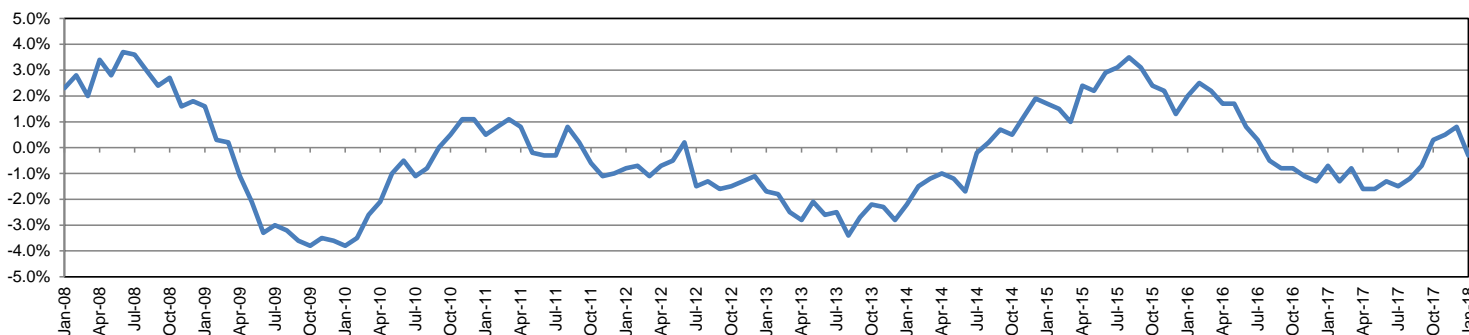
Employment by Industry

				Monthly Change		Annual Change	
	Jan-18	Dec-17	Jan-17	Actual	%	Actual	%
<b>Total Nonfarm</b>	59,500	60,700	59,700	-1,200	-2.0%	-200	-0.3%
Mining, Logging and Construction	2,800	2,900	2,700	-100	-3.4%	100	3.7%
Manufacturing	5,300	5,300	5,300	0	0.0%	0	0.0%
Trade, Transportation, and Utilities	13,100	13,500	13,600	-400	-3.0%	-500	-3.7%
Information	400	400	400	0	0.0%	0	0.0%
Financial Activities	2,200	2,200	2,200	0	0.0%	0	0.0%
Professional and Business Services	4,200	4,400	3,900	-200	-4.5%	300	7.7%
Education and Health Services	9,500	9,600	9,400	-100	-1.0%	100	1.1%
Leisure and Hospitality	6,700	6,800	6,700	-100	-1.5%	0	0.0%
Other Services	2,100	2,100	2,200	0	0.0%	-100	-4.5%
Government	13,200	13,500	13,300	-300	-2.2%	-100	-0.8%

Industry Size Class\*

Size Class	Employees per firm	Number of Firms	September 2017		
			Employment in Size Class	% Total Employment	
9	1000+	4	6,770	16.4%	
8	500-999	5	3,103	7.5%	
7	250-499	12	3,741	9.1%	
6	100-249	41	5,947	14.4%	
5	50-99	84	5,771	14.0%	
4	20-49	230	6,950	16.9%	
3	10-19	315	4,416	10.7%	
2	5-9	404	2,671	6.5%	
1	1-4	876	1,836	4.5%	
0	0	146	0	0.0%	
<b>Total</b>			2,117	41,205	100.0%

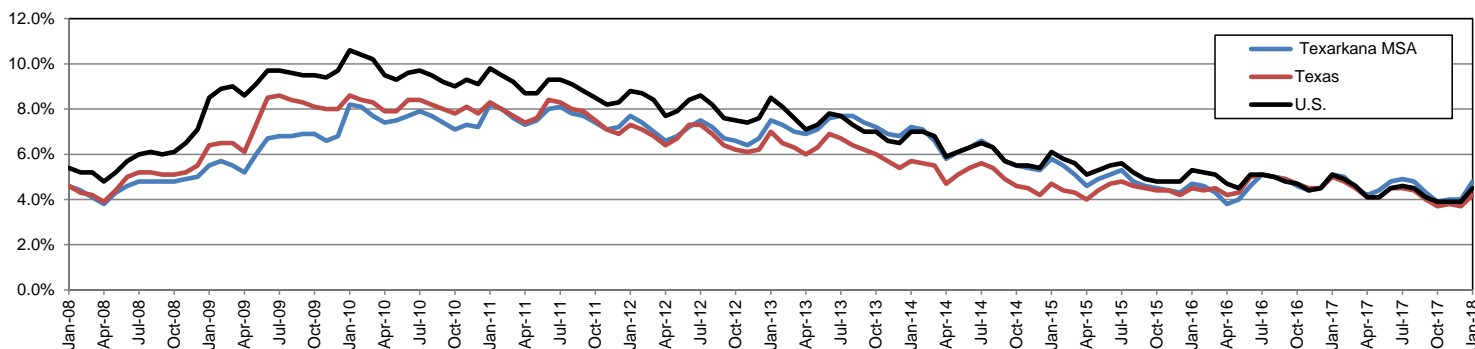
Annual Growth Rate for Total Nonagricultural Employment



Unemployment Information (all estimates in thousands)

	Texarkana MSA				Texas (Actual)				United States (Actual)			
	C.L.F.	Emp.	Unemp.	Rate	C.L.F.	Emp.	Unemp.	Rate	C.L.F.	Emp.	Unemp.	Rate
Jan-18	64.4	61.3	3.1	4.8	13,622.1	13,054.1	568.0	4.2	160,037.0	152,848.0	7,189.0	4.5
Dec-17	64.6	62.0	2.6	4.0	13,598.1	13,096.2	501.8	3.7	159,880.0	153,602.0	6,278.0	3.9
Jan-17	64.6	61.3	3.3	5.1	13,417.3	12,749.0	668.4	5.0	158,676.0	150,527.0	8,149.0	5.1

Historical Unemployment Rates



\* Texas counties only. Available at <http://www.tracer2.com>