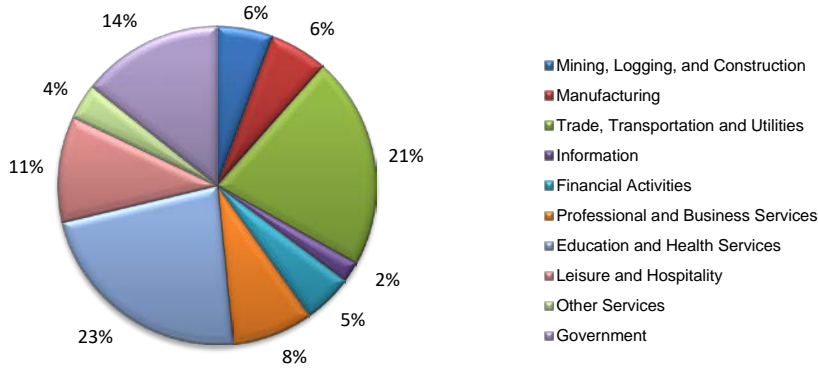
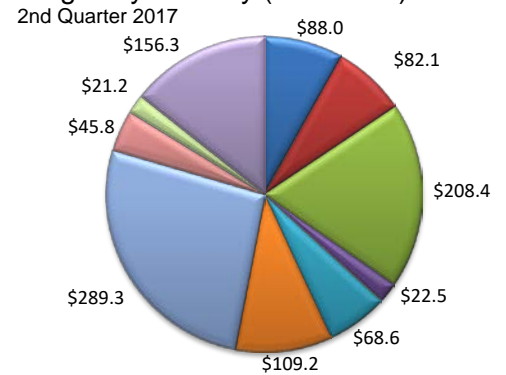


(Smith)

Industry Composition



Wages by Industry (in millions)



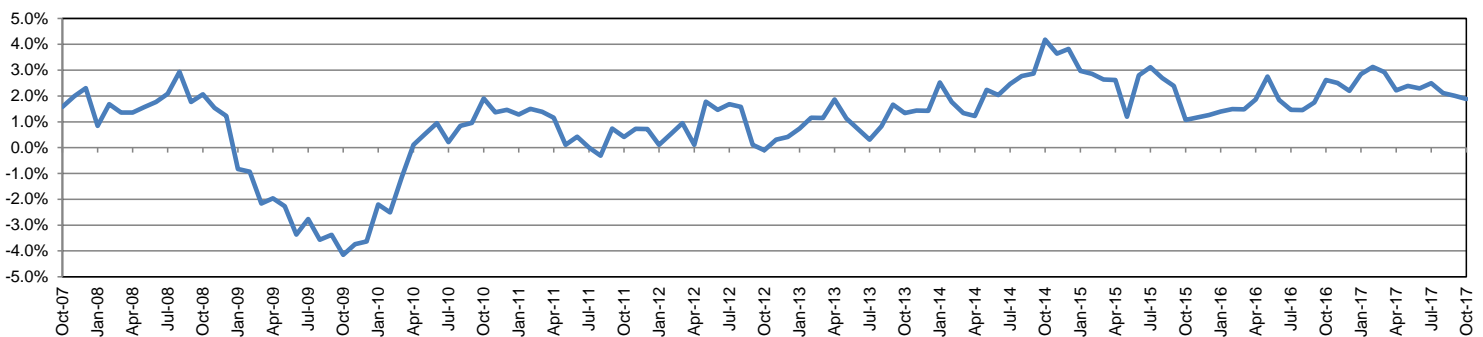
Employment by Industry

	Oct-17	Sep-17	Oct-16	Monthly Change		Annual Change	
				Actual	%	Actual	%
<b>Total Nonfarm</b>	<b>108,000</b>	<b>106,800</b>	<b>106,000</b>	<b>1,200</b>	<b>1.1%</b>	<b>2,000</b>	<b>1.9%</b>
Mining, Logging, and Construction	6,100	6,200	6,000	-100	-1.6%	100	1.7%
Manufacturing	6,400	6,400	6,300	0	0.0%	100	1.6%
Trade, Transportation, and Utilities	23,200	23,200	22,800	0	0.0%	400	1.8%
Information	2,300	2,300	2,200	0	0.0%	100	4.5%
Financial Activities	5,400	5,000	5,100	400	8.0%	300	5.9%
Professional and Business Services	8,900	8,900	9,100	0	0.0%	-200	-2.2%
Education and Health Services	24,700	24,700	23,800	0	0.0%	900	3.8%
Leisure and Hospitality	11,600	11,500	11,500	100	0.9%	100	0.9%
Other Services	3,900	3,900	4,100	0	0.0%	-200	-4.9%
Government	15,500	14,700	15,100	800	5.4%	400	2.6%

Industry Size Class

Size Class	Employees per firm	Number of Firms	June 2017	
			Employment in Size Class	% Total Employment
9	1000+	11	23,040	22.3%
8	500-999	16	10,887	10.5%
7	250-499	14	5,075	4.9%
6	100-249	97	13,900	13.4%
5	50-99	197	13,835	13.4%
4	20-49	527	15,956	15.4%
3	10-19	685	9,391	9.1%
2	5-9	929	6,205	6.0%
1	1-4	2,649	5,186	5.0%
0	0	463	0	0.0%
<b>Total</b>		<b>5,588</b>	<b>103,475</b>	<b>100.0%</b>

Annual Growth Rate for Total Nonagricultural Employment



Unemployment Information (all estimates in thousands)

	Tyler MSA				Texas (Actual)				United States (Actual)			
	C.L.F.	Emp.	Unemp.	Rate	C.L.F.	Emp.	Unemp.	Rate	C.L.F.	Emp.	Unemp.	Rate
Oct-17	107.6	103.4	4.2	3.9	13,392.3	12,922.1	470.2	3.5	160,465.0	154,223.0	6,242.0	3.9
Sep-17	107.6	103.6	4.0	3.7	13,498.7	12,954.8	543.9	4.0	161,049.0	154,494.0	6,556.0	4.1
Oct-16	106.8	102.0	4.9	4.5	13,338.7	12,725.9	612.9	4.6	159,783.0	152,335.0	7,447.0	4.7

Historical Unemployment Rates

