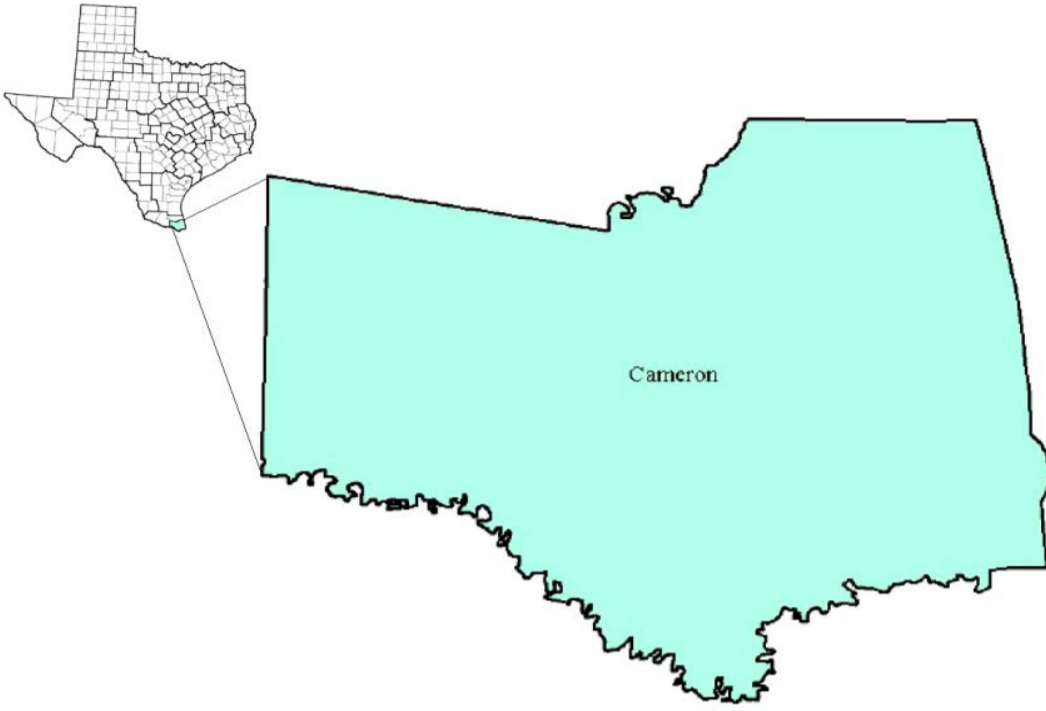


Cameron County Workforce Development Area

April 2017



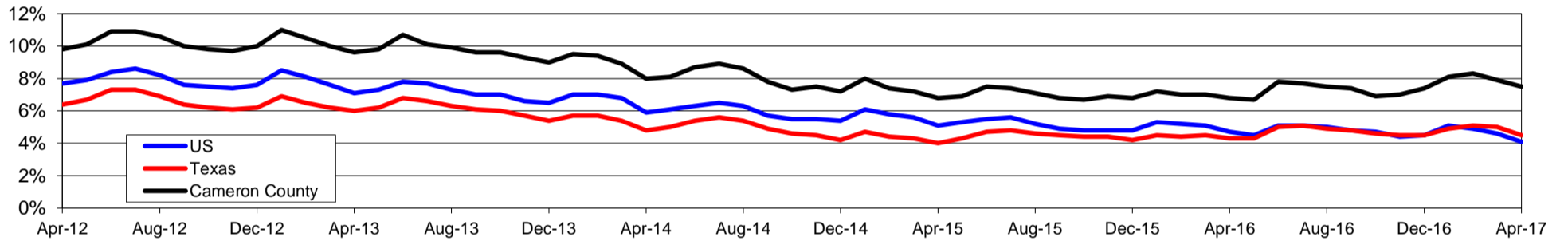
WDA Labor Force Statistics				
	Apr-17	Mar-17	Apr-16	OTY
CLF	168,774	169,502	165,521	3,253
Employed	156,133	156,148	154,306	1,827
Unemployed	12,641	13,354	11,215	1,426
Rate	7.5%	7.9%	6.8%	0.7%

Texas Labor Force Statistics				
	Apr-17	Mar-17	Apr-16	OTY
CLF	13,506,742	13,514,563	13,236,855	269,887
Employed	12,895,003	12,838,948	12,672,854	222,149
Unemployed	611,739	675,615	564,001	47,738
Rate	4.5%	5.0%	4.3%	0.2%

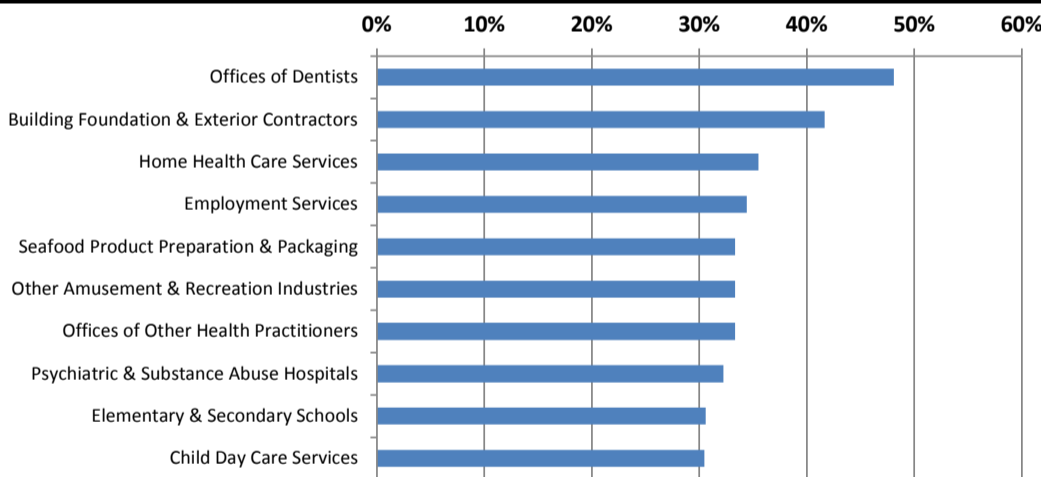
US Labor Force Statistics				
	Apr-17	Mar-17	Apr-16	OTY
CLF	159,817,000	159,912,000	158,488,000	1,329,000
Employed	153,262,000	152,628,000	151,075,000	2,187,000
Unemployed	6,555,000	7,284,000	7,413,000	-858,000
Rate	4.1%	4.6%	4.7%	-0.6%

Continued Claims for the Week of the 12th				
	Apr-17	Mar-17	Apr-16	OTY
WDA	2,679	2,696	3,056	-377
Texas	122,950	132,086	145,342	-22,392

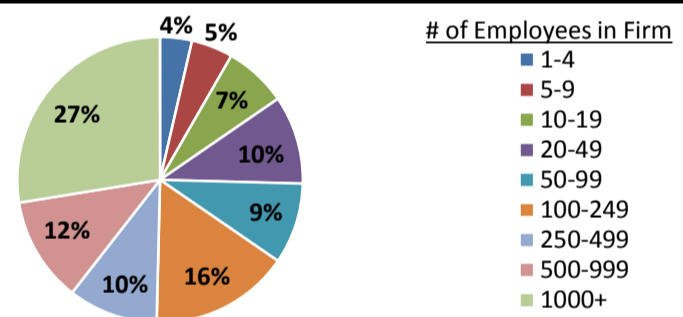
Historical Unemployment Rates



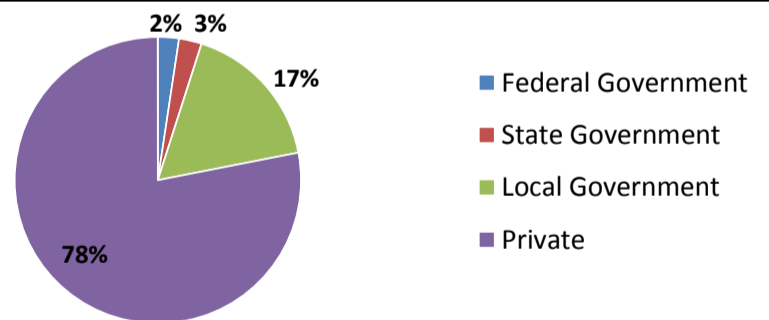
Projected Fastest Growing Industries in WDA (% growth 2014-2024)



Employment by Size Class (4th Quarter 2016)



Employment by Ownership (4th Quarter 2016)



Average Weekly Wage (4th Quarter 2016)

	Q4 2016	Q3 2016	Q4 2015	Change	
				Quarter	Year
WDA	\$640	\$636	\$650	\$4	-\$10
Texas	\$1,072	\$1,042	\$1,099	\$31	-\$27
US	N/A	\$1,027	\$1,083	N/A	N/A

Employment by Industry (4th Quarter 2016, Percent Change)

Industry	Employment	% of total	% Change	
			Quarter	Year
Natural resources and mining	691	0.5%	-9.3%	-3.9%
Construction	3,393	2.4%	2.5%	2.4%
Manufacturing	5,225	3.7%	-3.4%	-11.8%
Trade, transportation and utilities	28,154	20.1%	2.1%	-0.7%
Information	1,085	0.8%	-1.9%	-8.2%
Financial activities	4,962	3.6%	-2.6%	-1.7%
Professional and business services	11,626	8.3%	-1.8%	1.7%
Education and health services	59,961	42.9%	3.6%	3.5%
Leisure and hospitality	14,821	10.6%	-6.1%	2.0%
Other services	2,337	1.7%	1.9%	9.2%
Public administration	7,484	5.4%	5.3%	5.0%
Total	139,739	100.0%	1.2%	1.5%

Employment by Industry (4th Quarter 2016)

