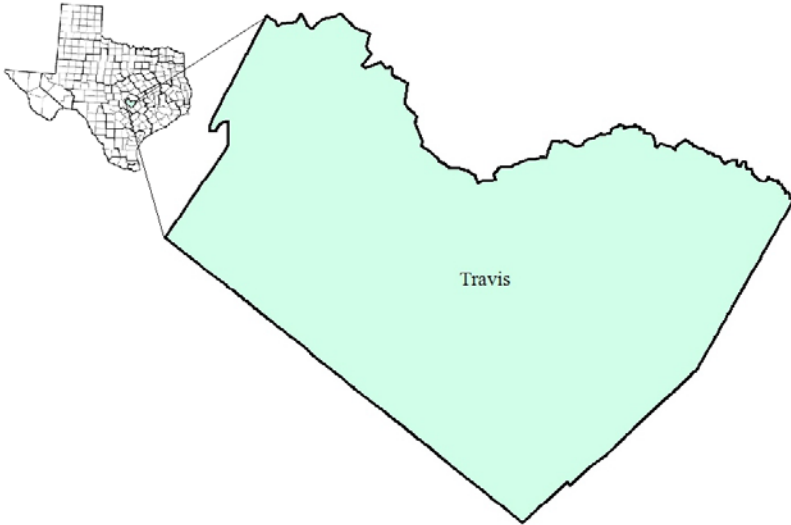


# Capital Area Workforce Development Area

September 2017



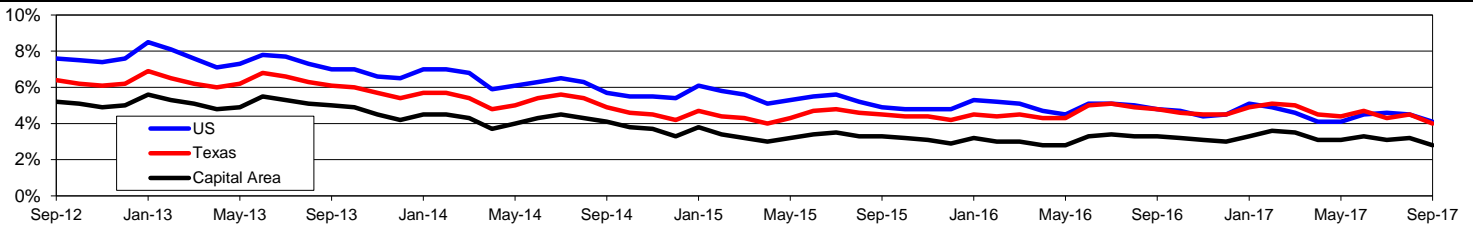
WDA Labor Force Statistics				
	Sep-17	Aug-17	Sep-16	OTY
CLF	698,298	688,521	683,535	14,763
Employed	678,637	666,309	660,724	17,913
Unemployed	19,661	22,212	22,811	-3,150
Rate	2.8%	3.2%	3.3%	-0.5%

Texas Labor Force Statistics				
	Sep-17	Aug-17	Sep-16	OTY
CLF	13,499,113	13,406,493	13,359,661	139,452
Employed	12,955,476	12,801,715	12,712,681	242,795
Unemployed	543,637	604,778	646,980	-103,343
Rate	4.0%	4.5%	4.8%	-0.8%

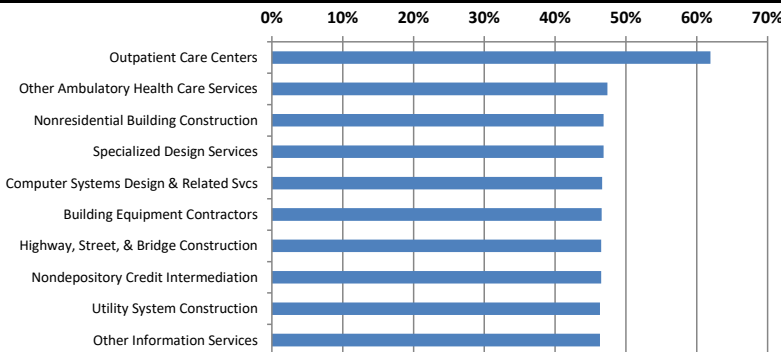
US Labor Force Statistics				
	Sep-17	Aug-17	Sep-16	OTY
CLF	161,049,000	160,863,000	159,636,000	1,413,000
Employed	154,494,000	153,576,000	151,977,000	2,517,000
Unemployed	6,556,000	7,287,000	7,658,000	-1,102,000
Rate	4.1%	4.5%	4.8%	-0.7%

Continued Claims for the Week of the 12th				
	Sep-17	Aug-17	Sep-16	OTY
WDA	3,563	4,038	4,004	-441
Texas	112,682	117,088	133,309	-20,627

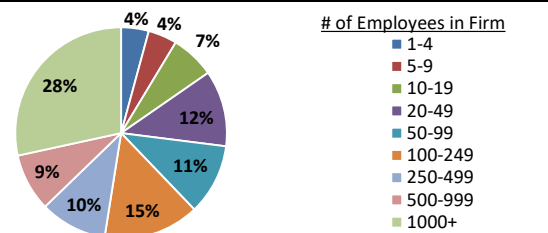
## Historical Unemployment Rates



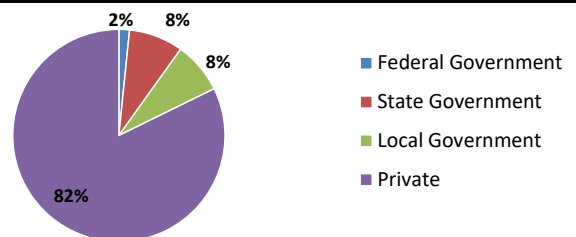
## Projected Fastest Growing Industries in WDA (% growth 2014-2024)



## Employment by Size Class (1st Quarter 2017)



## Employment by Ownership (1st Quarter 2017)



## Average Weekly Wage (1st Quarter 2017)

	Q1 2017	Q4 2016	Q1 2016	Change	
				Quarter	Year
WDA	\$1,251	\$1,245	\$1,164	\$7	\$87
Texas	\$1,124	\$1,072	\$1,065	\$52	\$60
US	\$1,111	\$1,067	\$1,042	\$44	\$69

## Employment by Industry (1st Quarter 2017, Percent Change)

Industry	Employment	% of total	% Change	
			Quarter	Year
Natural resources and mining	2,263	0.3%	5.9%	-8.0%
Construction	40,481	5.7%	-1.9%	3.2%
Manufacturing	37,545	5.3%	0.5%	1.8%
Trade, transportation and utilities	113,896	16.0%	-2.2%	2.2%
Information	25,796	3.6%	1.3%	4.1%
Financial activities	46,836	6.6%	1.4%	5.8%
Professional and business services	136,235	19.1%	-2.0%	2.4%
Education and health services	141,141	19.8%	0.7%	1.6%
Leisure and hospitality	90,795	12.7%	-1.5%	3.4%
Other services	25,655	3.6%	-0.1%	3.2%
Public administration	52,376	7.3%	3.2%	5.5%
<b>Total</b>	<b>713,019</b>	<b>100.0%</b>	<b>-0.5%</b>	<b>2.8%</b>

## Employment by Industry (1st Quarter 2017)

