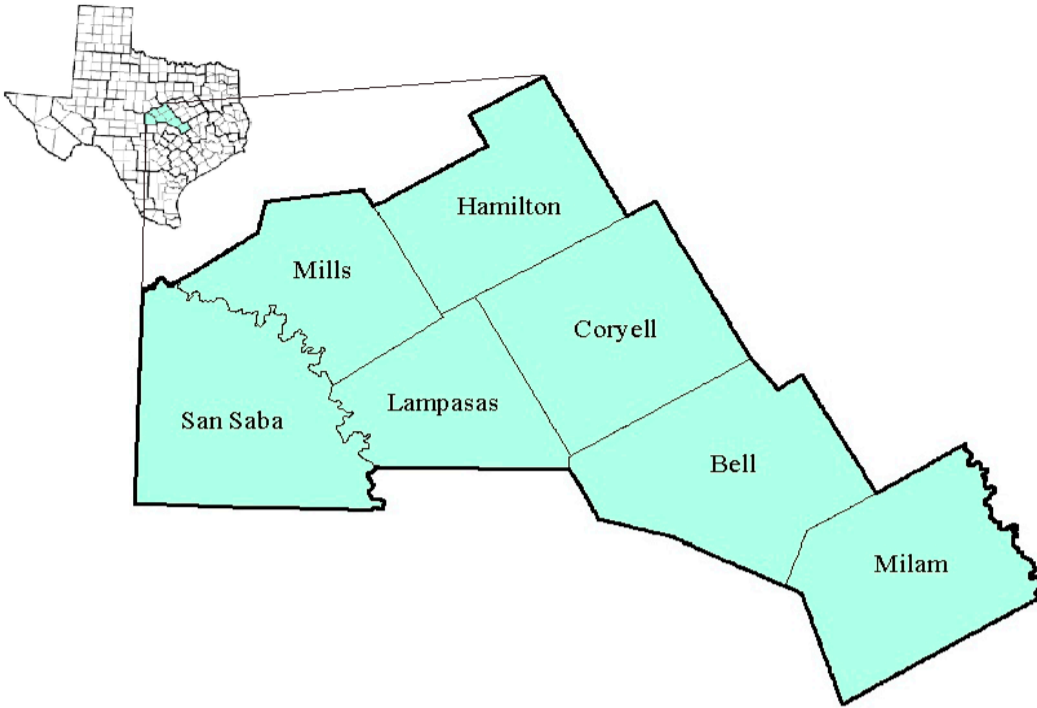


Central Texas Workforce Development Area

June 2017



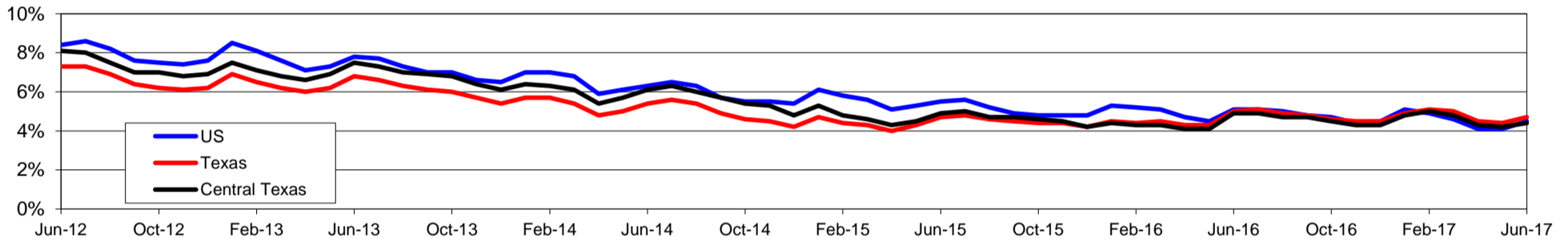
WDA Labor Force Statistics				
	Jun-17	May-17	Jun-16	OTY
CLF	196,770	196,984	193,835	2,935
Employed	188,028	188,624	184,411	3,617
Unemployed	8,742	8,360	9,424	-682
Rate	4.4%	4.2%	4.9%	-0.5%

Texas Labor Force Statistics				
	Jun-17	May-17	Jun-16	OTY
CLF	13,464,322	13,450,012	13,319,665	144,657
Employed	12,833,254	12,858,020	12,656,717	176,537
Unemployed	631,068	591,992	662,948	-31,880
Rate	4.7%	4.4%	5.0%	-0.3%

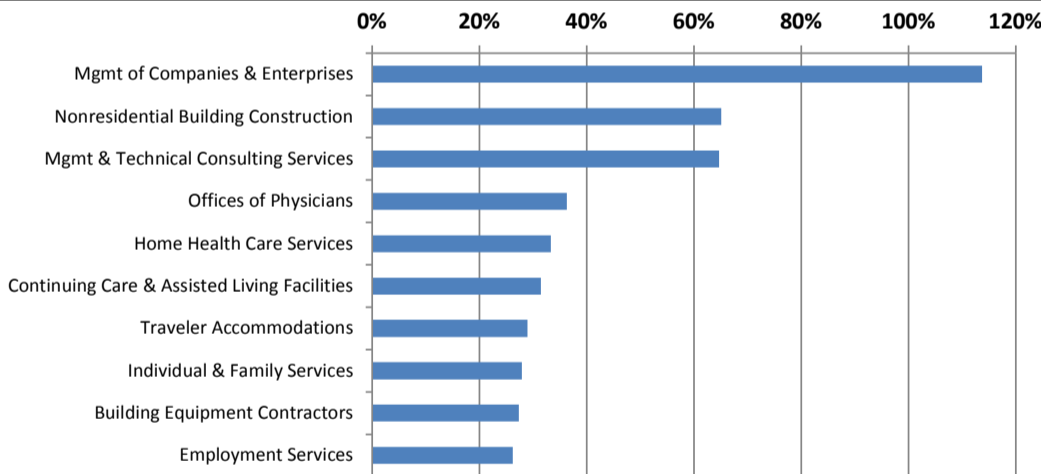
US Labor Force Statistics				
	Jun-17	May-17	Jun-16	OTY
CLF	161,337,000	159,979,000	160,135,000	1,202,000
Employed	154,086,000	153,407,000	151,990,000	2,096,000
Unemployed	7,250,000	6,572,000	8,144,000	-894,000
Rate	4.5%	4.1%	5.1%	-0.6%

Continued Claims for the Week of the 12th				
	Jun-17	May-17	Jun-16	OTY
WDA	1,337	1,311	1,811	-474
Texas	123,045	113,603	157,420	-34,375

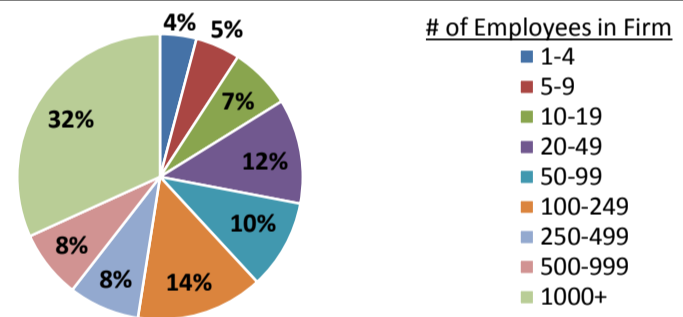
Historical Unemployment Rates



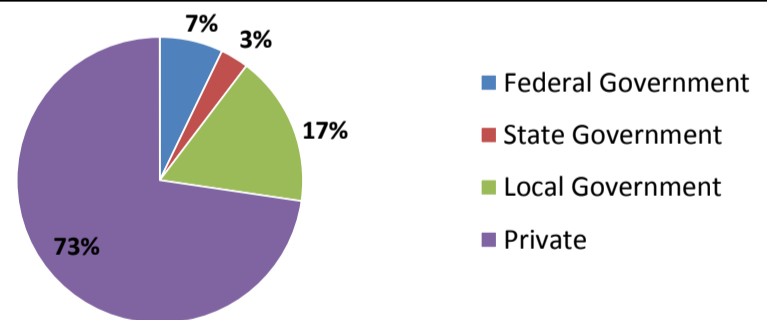
Projected Fastest Growing Industries in WDA (% growth 2014-2024)



Employment by Size Class (4th Quarter 2016)



Employment by Ownership (4th Quarter 2016)



Average Weekly Wage (4th Quarter 2016)

	Q4 2016	Q3 2016	Q4 2015	Change	
				Quarter	Year
WDA	\$853	\$839	\$859	\$14	-\$6
Texas	\$1,072	\$1,042	\$1,099	\$31	-\$27
US	\$1,067	\$1,027	\$1,083	\$40	-\$16

Employment by Industry (4th Quarter 2016, Percent Change)

Industry	Employment	% of total	% Change	
			Quarter	Year
Natural resources and mining	1,284	0.9%	-0.5%	2.6%
Construction	7,701	5.1%	-0.1%	-19.2%
Manufacturing	8,090	5.4%	-0.1%	1.7%
Trade, transportation and utilities	31,410	20.9%	1.4%	1.9%
Information	1,423	0.9%	-3.6%	-19.7%
Financial activities	7,475	5.0%	2.8%	1.1%
Professional and business services	10,713	7.1%	1.2%	-0.2%
Education and health services	51,382	34.1%	4.3%	2.6%
Leisure and hospitality	15,672	10.4%	-2.9%	0.4%
Other services	4,372	2.9%	-3.3%	2.2%
Public administration	10,955	7.3%	-1.4%	2.1%
Total	150,477	100.0%	1.4%	0.2%

Employment by Industry (4th Quarter 2016)

