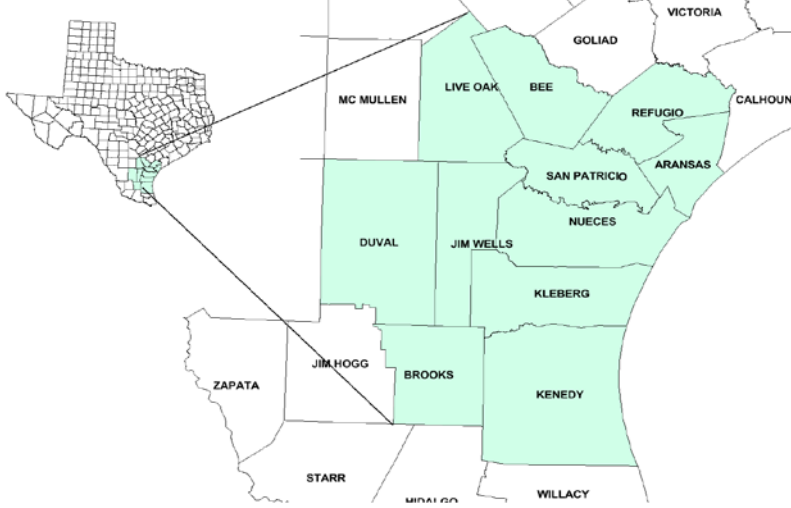


# Coastal Bend Workforce Development Area

## August 2017



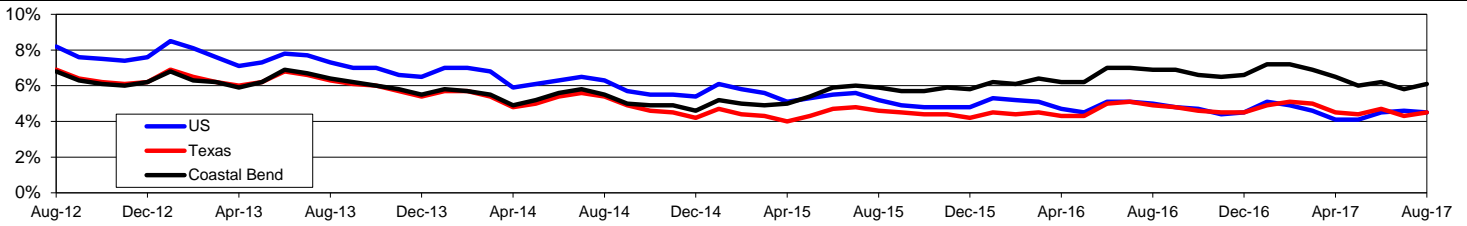
WDA Labor Force Statistics				
	Aug-17	Jul-17	Aug-16	OTY
CLF	261,370	260,957	261,641	-271
Employed	245,446	245,856	243,497	1,949
Unemployed	15,924	15,101	18,144	-2,220
Rate	6.1%	5.8%	6.9%	-0.8%

Texas Labor Force Statistics				
	Aug-17	Jul-17	Aug-16	OTY
CLF	13,406,779	13,434,624	13,295,171	111,608
Employed	12,802,022	12,850,647	12,638,955	163,067
Unemployed	604,757	583,977	656,216	-51,459
Rate	4.5%	4.3%	4.9%	-0.4%

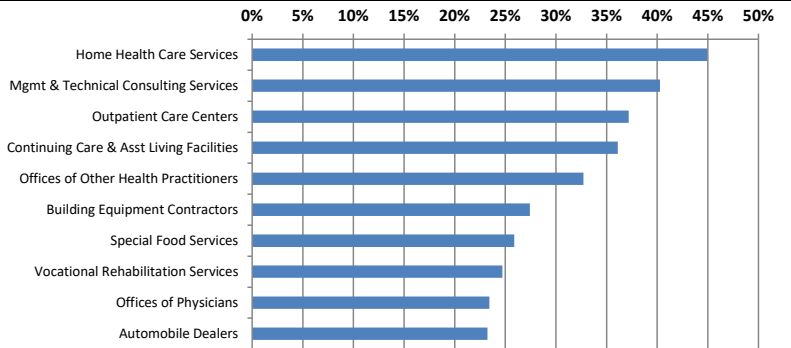
US Labor Force Statistics				
	Aug-17	Jul-17	Aug-16	OTY
CLF	160,863,000	161,911,000	159,800,000	1,063,000
Employed	153,576,000	154,470,000	151,804,000	1,772,000
Unemployed	7,287,000	7,441,000	7,996,000	-709,000
Rate	4.5%	4.6%	5.0%	-0.5%

Continued Claims for the Week of the 12th				
	Aug-17	Jul-17	Aug-16	OTY
WDA	3,180	3,328	4,584	-1,404
Texas	115,986	124,432	148,897	-32,911

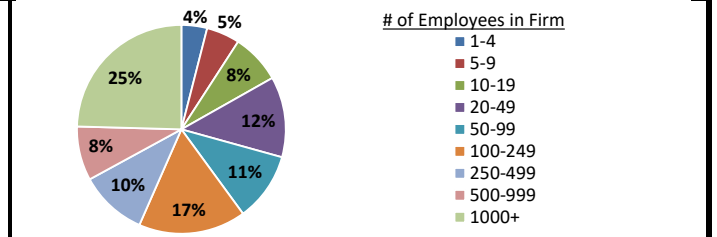
### Historical Unemployment Rates



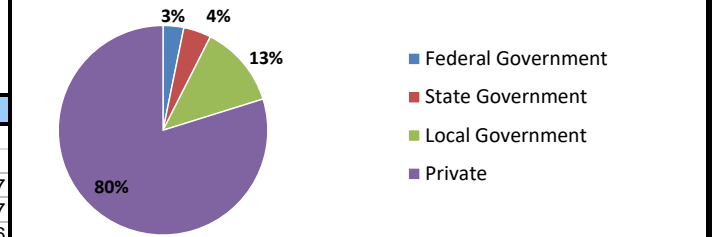
### Projected Fastest Growing Industries in WDA (% growth 2014-2024)



### Employment by Size Class (4th Quarter 2016)



### Employment by Ownership (4th Quarter 2016)



### Average Weekly Wage (4th Quarter 2016)

	Q4 2016	Q3 2016	Q4 2015	Change	
				Quarter	Year
WDA	\$869	\$861	\$896	\$8	-\$27
Texas	\$1,072	\$1,042	\$1,099	\$31	-\$27
US	\$1,067	\$1,027	\$1,083	\$40	-\$16

### Employment by Industry (4th Quarter 2016, Percent Change)

Industry	Employment	% of total	% Change	
			Quarter	Year
Natural resources and mining	9,535	4.0%	1.3%	-25.2%
Construction	25,042	10.5%	2.3%	22.4%
Manufacturing	12,626	5.3%	-2.6%	-10.1%
Trade, transportation and utilities	44,227	18.6%	0.6%	-4.6%
Information	2,138	0.9%	-2.8%	-12.7%
Financial activities	9,287	3.9%	-0.9%	-10.7%
Professional and business services	18,209	7.7%	0.1%	-4.3%
Education and health services	67,395	28.4%	5.4%	2.7%
Leisure and hospitality	30,623	12.9%	-5.8%	-2.0%
Other services	6,237	2.6%	-3.8%	-8.5%
Public administration	12,223	5.1%	1.5%	3.0%
<b>Total</b>	<b>237,542</b>	<b>100.0%</b>	<b>0.8%</b>	<b>-1.5%</b>

### Employment by Industry (4th Quarter 2016)

