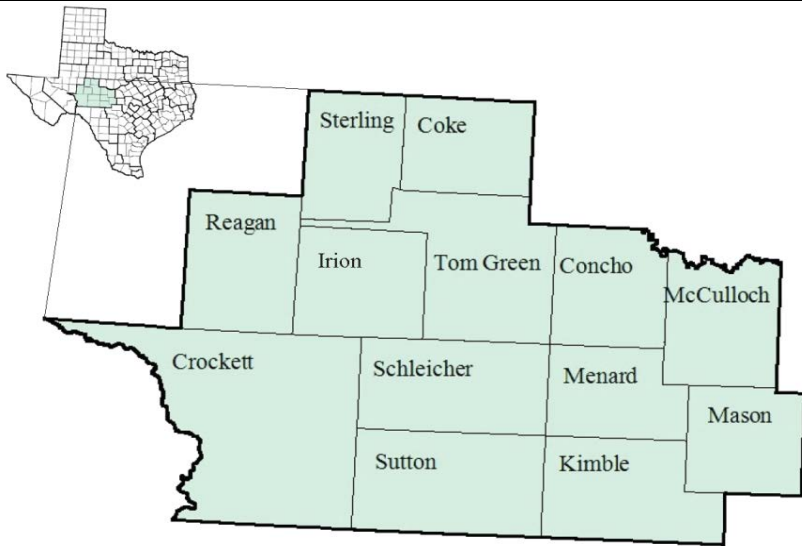


Concho Valley Workforce Development Area

December 2017



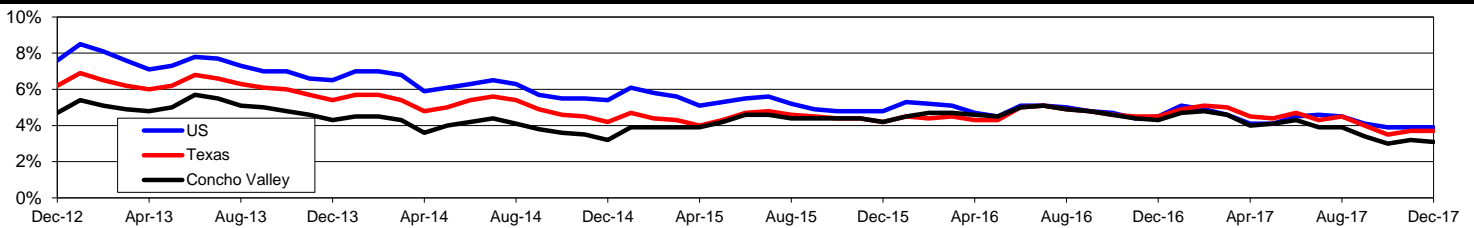
WDA Labor Force Statistics				
	Dec-17	Nov-17	Dec-16	OTY
CLF	71,812	71,463	71,527	285
Employed	69,615	69,184	68,453	1,162
Unemployed	2,197	2,279	3,074	-877
Rate	3.1%	3.2%	4.3%	-1.2%

Texas Labor Force Statistics				
	Dec-17	Nov-17	Dec-16	OTY
CLF	13,545,282	13,500,872	13,353,321	191,961
Employed	13,043,959	13,001,592	12,747,329	296,630
Unemployed	501,323	499,280	605,992	-104,669
Rate	3.7%	3.7%	4.5%	-0.8%

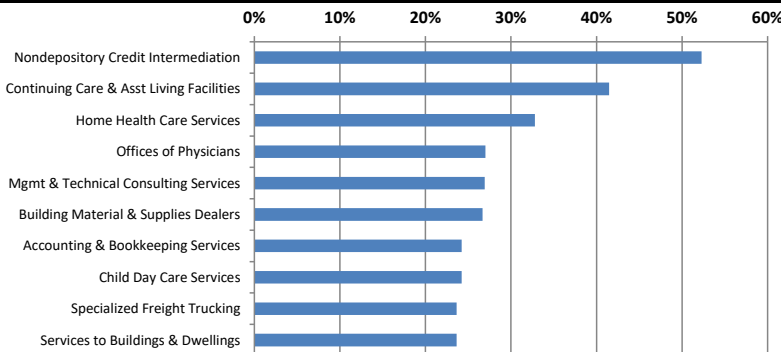
US Labor Force Statistics				
	Dec-17	Nov-17	Dec-16	OTY
CLF	159,880,000	160,466,000	158,968,000	912,000
Employed	153,602,000	154,180,000	151,798,000	1,804,000
Unemployed	6,278,000	6,286,000	7,170,000	-892,000
Rate	3.9%	3.9%	4.5%	-0.6%

Continued Claims for the Week of the 12th				
	Dec-17	Nov-17	Dec-16	OTY
WDA	260	255	459	-199
Texas	108,432	105,083	129,904	-21,472

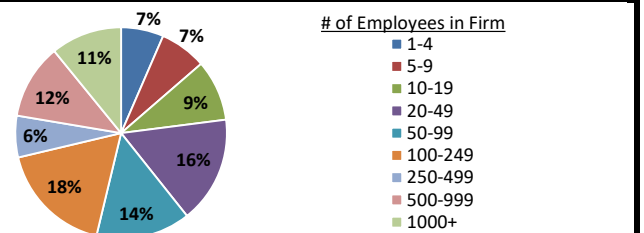
Historical Unemployment Rates



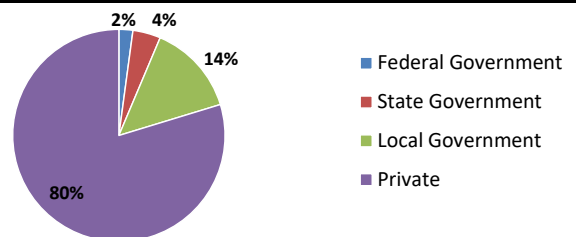
Projected Fastest Growing Industries in WDA (% growth 2014-2024)



Employment by Size Class (2nd Quarter 2017)



Employment by Ownership (2nd Quarter 2017)



Average Weekly Wage (2nd Quarter 2017)

	Q2 2017	Q1 2017	Q2 2016	Change	
				Quarter	Year
WDA	\$789	\$796	\$741	-\$8	\$48
Texas	\$1,026	\$1,124	\$1,000	-\$99	\$25
US	N/A	\$1,111	\$988	N/A	N/A

Employment by Industry (2nd Quarter 2017, Percent Change)

Industry	Employment	% of total	% Change	
			Quarter	Year
Natural resources and mining	4,282	6.9%	4.8%	10.9%
Construction	3,311	5.4%	-0.2%	-1.5%
Manufacturing	3,348	5.4%	1.0%	-6.3%
Trade, transportation and utilities	12,761	20.6%	0.8%	-2.4%
Information	821	1.3%	0.7%	-6.5%
Financial activities	3,149	5.1%	3.7%	5.5%
Professional and business services	4,342	7.0%	-1.0%	1.1%
Education and health services	16,636	26.9%	-0.3%	0.1%
Leisure and hospitality	7,792	12.6%	3.0%	1.8%
Other services	1,772	2.9%	-0.2%	-5.0%
Public administration	3,594	5.8%	1.2%	-0.5%
Total	61,808	100.0%	1.0%	0.0%

Employment by Industry (2nd Quarter 2017)

