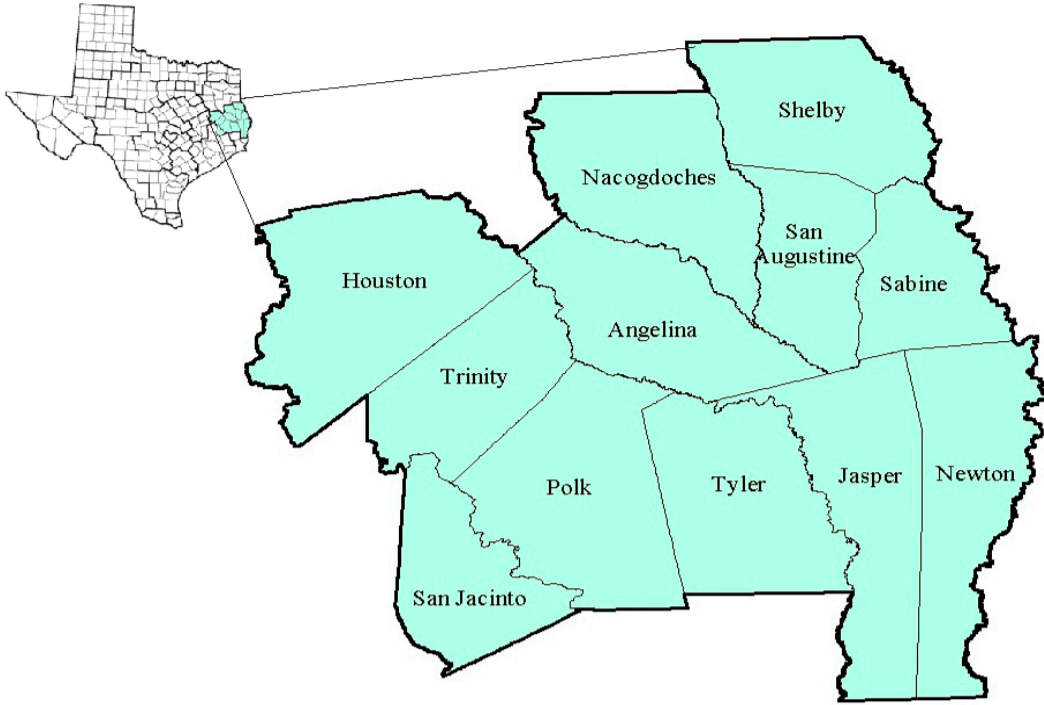


Deep East Texas Workforce Development Area

April 2017



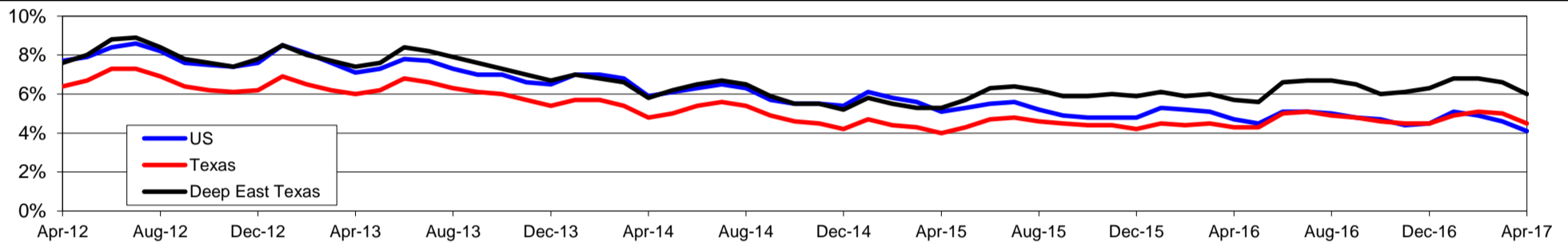
WDA Labor Force Statistics				
	Apr-17	Mar-17	Apr-16	OTY
CLF	154,293	154,729	153,271	1,022
Employed	145,022	144,515	144,596	426
Unemployed	9,271	10,214	8,675	596
Rate	6.0%	6.6%	5.7%	0.3%

Texas Labor Force Statistics				
	Apr-17	Mar-17	Apr-16	OTY
CLF	13,506,742	13,514,563	13,236,855	269,887
Employed	12,895,003	12,838,948	12,672,854	222,149
Unemployed	611,739	675,615	564,001	47,738
Rate	4.5%	5.0%	4.3%	0.2%

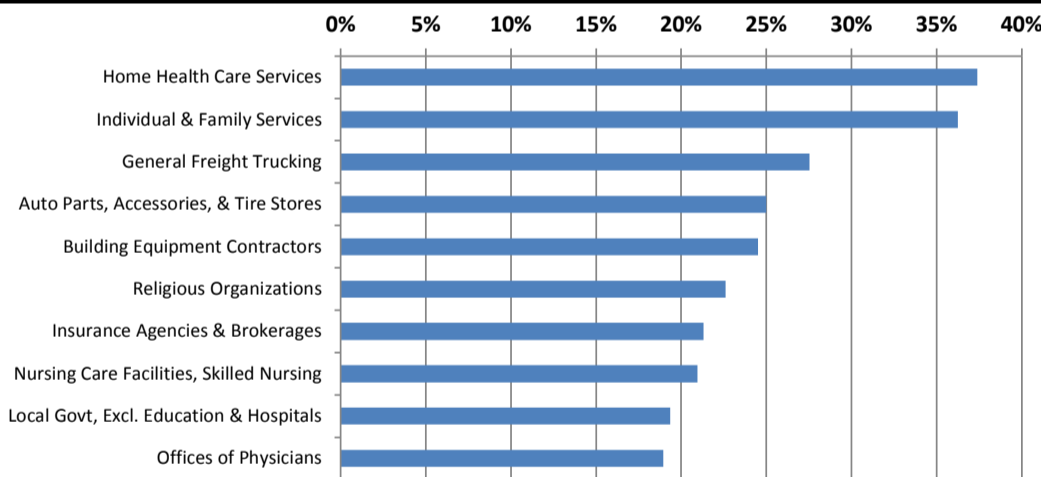
US Labor Force Statistics				
	Apr-17	Mar-17	Apr-16	OTY
CLF	159,817,000	159,912,000	158,488,000	1,329,000
Employed	153,262,000	152,628,000	151,075,000	2,187,000
Unemployed	6,555,000	7,284,000	7,413,000	-858,000
Rate	4.1%	4.6%	4.7%	-0.6%

Continued Claims for the Week of the 12th				
	Apr-17	Mar-17	Apr-16	OTY
WDA	1,640	1,756	2,229	-589
Texas	122,950	132,086	145,342	-22,392

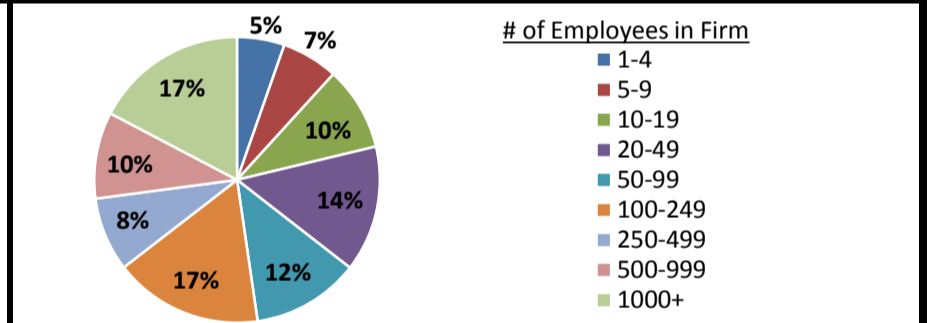
Historical Unemployment Rates



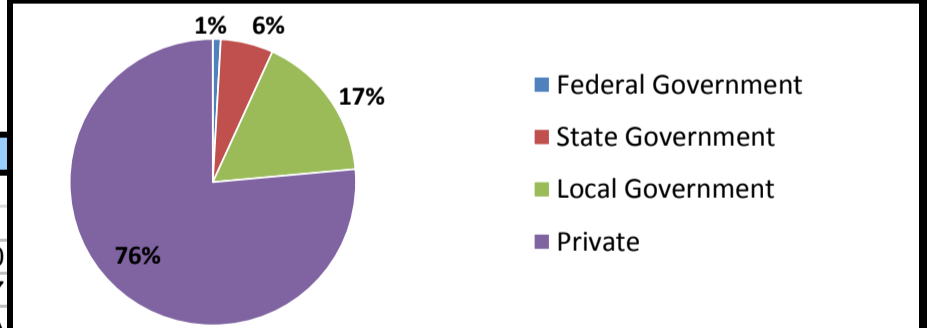
Projected Fastest Growing Industries in WDA (% growth 2014-2024)



Employment by Size Class (4th Quarter 2016)



Employment by Ownership (4th Quarter 2016)



Average Weekly Wage (4th Quarter 2016)

	Q4 2016	Q3 2016	Q4 2015	Change	
				Quarter	Year
WDA	\$752	\$734	\$772	\$18	-\$20
Texas	\$1,072	\$1,042	\$1,099	\$31	-\$27
US	N/A	\$1,027	\$1,083	N/A	N/A

Employment by Industry (4th Quarter 2016, Percent Change)

Industry	Employment	% of total	% Change	
			Quarter	Year
Natural resources and mining	2,892	2.7%	3.1%	-7.0%
Construction	5,704	5.2%	2.3%	1.9%
Manufacturing	12,051	11.1%	-2.2%	-1.7%
Trade, transportation and utilities	21,504	19.7%	0.7%	-2.3%
Information	841	0.8%	-1.6%	-3.4%
Financial activities	4,154	3.8%	-0.1%	1.9%
Professional and business services	7,459	6.8%	1.3%	5.5%
Education and health services	35,009	32.1%	3.4%	1.7%
Leisure and hospitality	10,392	9.5%	-1.2%	0.8%
Other services	2,337	2.1%	-1.4%	3.4%
Public administration	6,564	6.0%	0.7%	3.2%
Total	108,907	100.0%	1.1%	0.5%

Employment by Industry (4th Quarter 2016)

