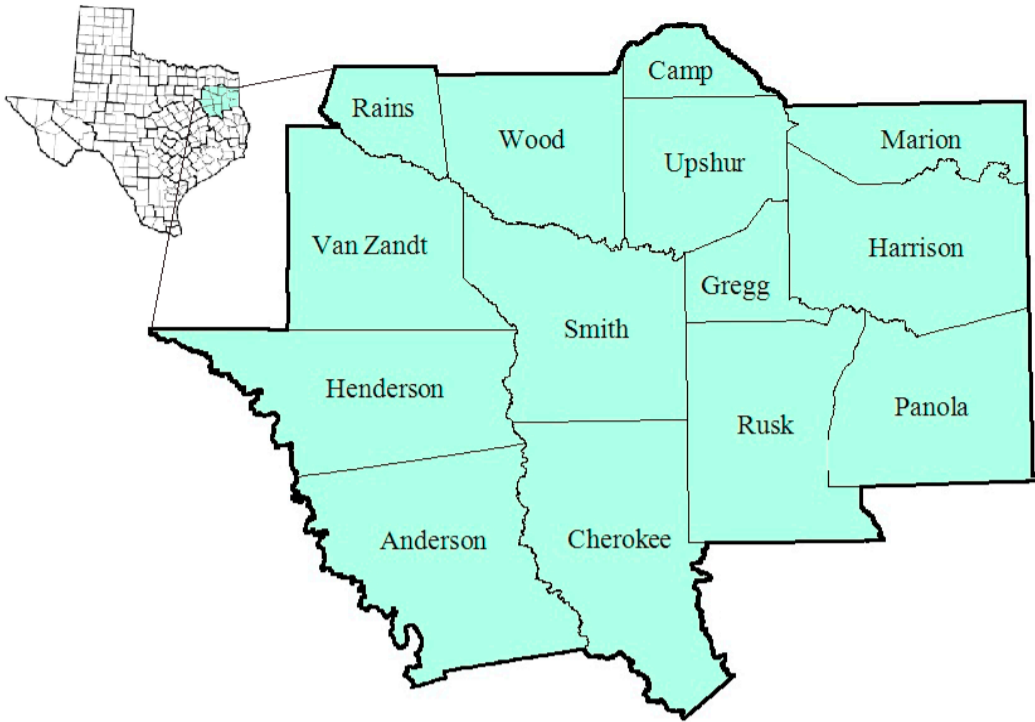


# East Texas Workforce Development Area

June 2017



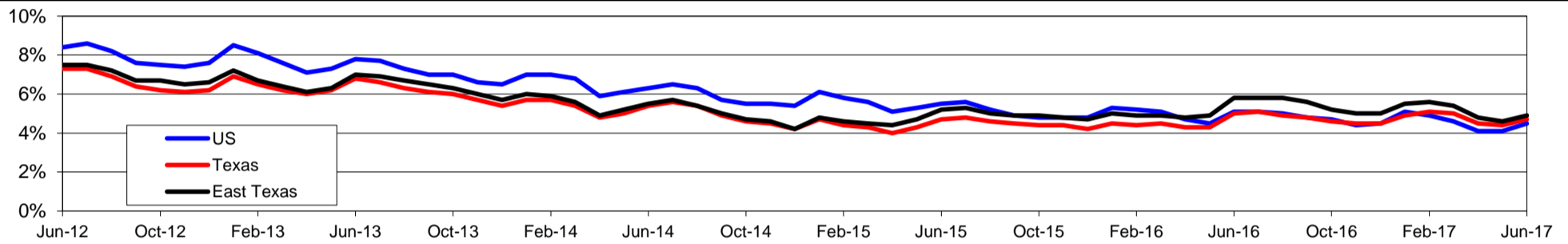
WDA Labor Force Statistics				
	Jun-17	May-17	Jun-16	OTY
CLF	382,963	381,974	383,696	-733
Employed	364,279	364,312	361,609	2,670
Unemployed	18,684	17,662	22,087	-3,403
Rate	4.9%	4.6%	5.8%	-0.9%

Texas Labor Force Statistics				
	Jun-17	May-17	Jun-16	OTY
CLF	13,464,322	13,450,012	13,319,665	144,657
Employed	12,833,254	12,858,020	12,656,717	176,537
Unemployed	631,068	591,992	662,948	-31,880
Rate	4.7%	4.4%	5.0%	-0.3%

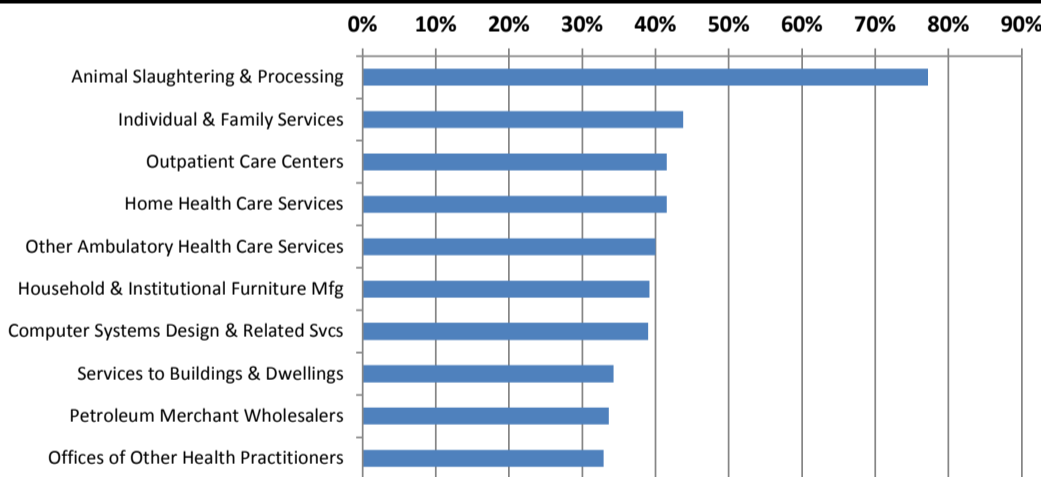
US Labor Force Statistics				
	Jun-17	May-17	Jun-16	OTY
CLF	161,337,000	159,979,000	160,135,000	1,202,000
Employed	154,086,000	153,407,000	151,990,000	2,096,000
Unemployed	7,250,000	6,572,000	8,144,000	-894,000
Rate	4.5%	4.1%	5.1%	-0.6%

Continued Claims for the Week of the 12th				
	Jun-17	May-17	Jun-16	OTY
WDA	3,127	2,808	5,883	-2,756
Texas	123,045	113,603	157,420	-34,375

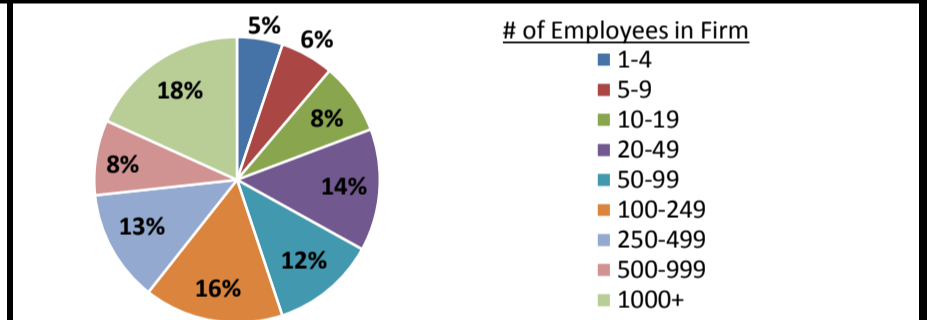
## Historical Unemployment Rates



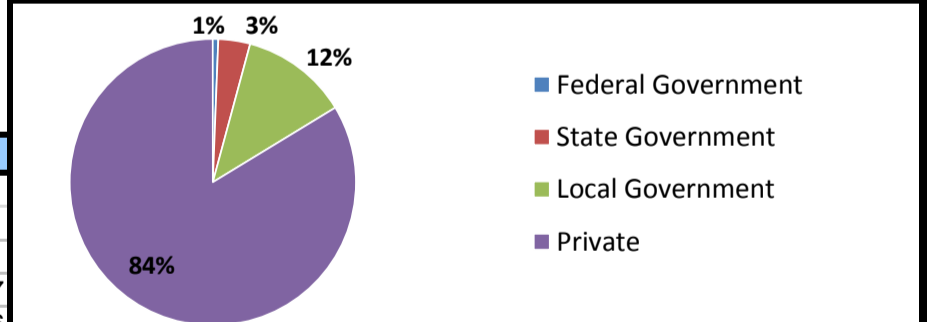
## Projected Fastest Growing Industries in WDA (% growth 2014-2024)



## Employment by Size Class (4th Quarter 2016)



## Employment by Ownership (4th Quarter 2016)



## Average Weekly Wage (4th Quarter 2016)

	Q4 2016	Q3 2016	Q4 2015	Change	
				Quarter	Year
WDA	\$830	\$815	\$861	\$15	-\$31
Texas	\$1,072	\$1,042	\$1,099	\$31	-\$27
US	\$1,067	\$1,027	\$1,083	\$40	-\$16

## Employment by Industry (4th Quarter 2016, Percent Change)

Industry	Employment	% of total	% Change	
			Quarter	Year
Natural resources and mining	12,298	4.0%	3.3%	-13.9%
Construction	22,341	7.2%	-0.5%	-1.3%
Manufacturing	29,809	9.6%	-2.3%	-5.0%
Trade, transportation and utilities	65,516	21.2%	0.8%	-0.4%
Information	4,279	1.4%	-2.8%	-3.3%
Financial activities	13,038	4.2%	1.1%	-0.6%
Professional and business services	24,046	7.8%	0.4%	1.4%
Education and health services	86,150	27.9%	4.3%	1.4%
Leisure and hospitality	30,014	9.7%	-4.2%	2.8%
Other services	8,147	2.6%	-6.8%	-0.7%
Public administration	13,463	4.4%	1.3%	4.0%
<b>Total</b>	<b>309,101</b>	<b>100.0%</b>	<b>0.7%</b>	<b>-0.5%</b>

## Employment by Industry (4th Quarter 2016)

