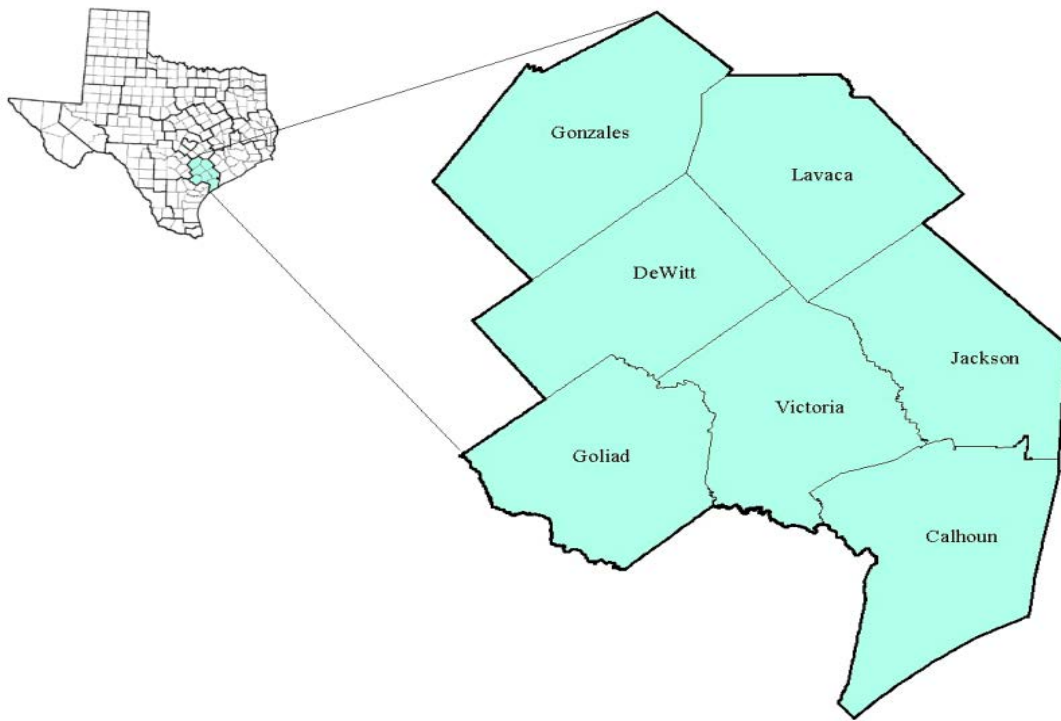


Golden Crescent Workforce Development Area

June 2017



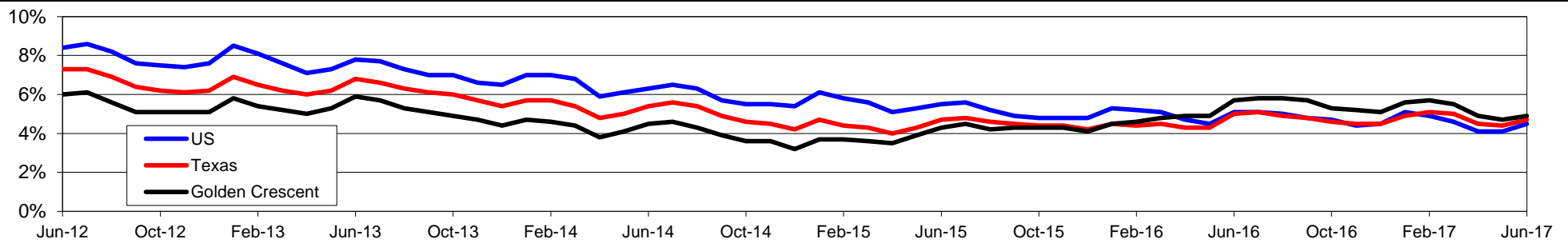
WDA Labor Force Statistics				
	Jun-17	May-17	Jun-16	OTY
CLF	91,900	91,771	93,355	-1,455
Employed	87,399	87,499	88,046	-647
Unemployed	4,501	4,272	5,309	-808
Rate	4.9%	4.7%	5.7%	-0.8%

Texas Labor Force Statistics				
	Jun-17	May-17	Jun-16	OTY
CLF	13,464,322	13,450,012	13,319,665	144,657
Employed	12,833,254	12,858,020	12,656,717	176,537
Unemployed	631,068	591,992	662,948	-31,880
Rate	4.7%	4.4%	5.0%	-0.3%

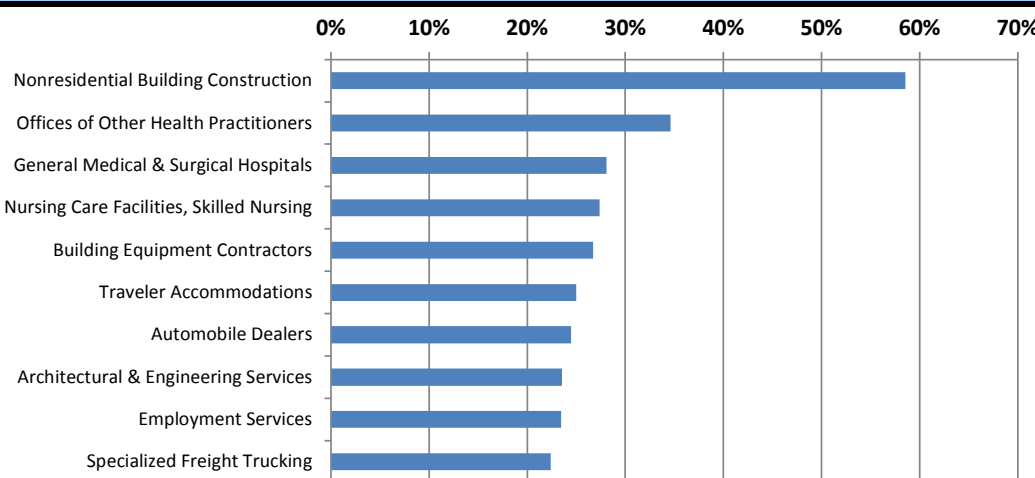
US Labor Force Statistics				
	Jun-17	May-17	Jun-16	OTY
CLF	161,337,000	159,979,000	160,135,000	1,202,000
Employed	154,086,000	153,407,000	151,990,000	2,096,000
Unemployed	7,250,000	6,572,000	8,144,000	-894,000
Rate	4.5%	4.1%	5.1%	-0.6%

Continued Claims for the Week of the 12th				
	Jun-17	May-17	Jun-16	OTY
WDA	709	628	1,620	-911
Texas	123,045	113,603	157,420	-34,375

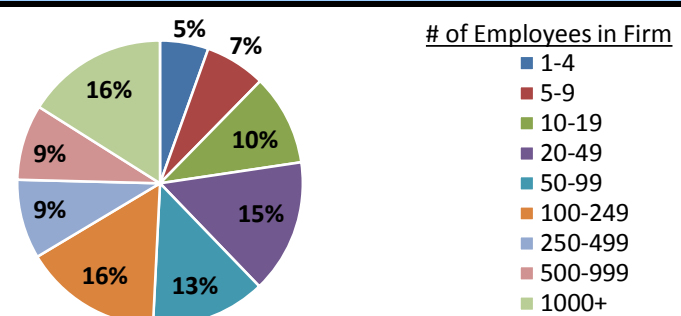
Historical Unemployment Rates



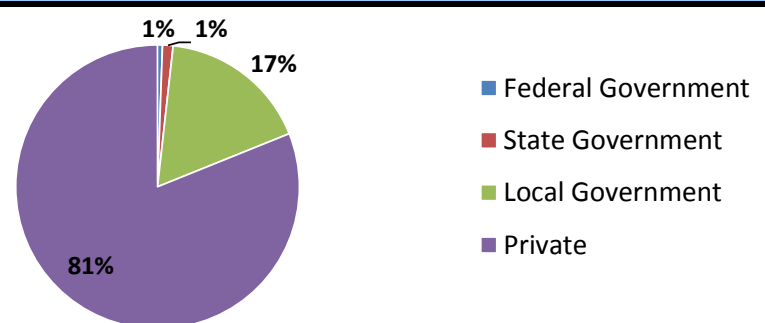
Projected Fastest Growing Industries in WDA (% growth 2014-2024)



Employment by Size Class (4th Quarter 2016)



Employment by Ownership (4th Quarter 2016)



Average Weekly Wage (4th Quarter 2016)

	Q4 2016	Q3 2016	Q4 2015	Change	
				Quarter	Year
WDA	\$890	\$874	\$930	\$16	-\$40
Texas	\$1,072	\$1,042	\$1,099	\$31	-\$27
US	\$1,067	\$1,027	\$1,083	\$40	-\$16

Employment by Industry (4th Quarter 2016, Percent Change)

Industry	Employment	% of total	% Change	
			Quarter	Year
Natural resources and mining	4,574	5.9%	2.6%	-17.9%
Construction	6,506	8.4%	-6.4%	-13.5%
Manufacturing	9,733	12.6%	0.1%	-6.3%
Trade, transportation and utilities	16,552	21.5%	0.7%	-2.9%
Information	724	0.9%	0.6%	-1.8%
Financial activities	3,175	4.1%	0.8%	-23.0%
Professional and business services	4,332	5.6%	-0.3%	-0.5%
Education and health services	19,312	25.1%	2.5%	-2.9%
Leisure and hospitality	7,002	9.1%	-5.0%	-1.1%
Other services	1,907	2.5%	-0.7%	-2.3%
Public administration	3,195	4.1%	1.3%	3.0%
Total	77,012	100.0%	-0.1%	-5.8%

Employment by Industry (4th Quarter 2016)

