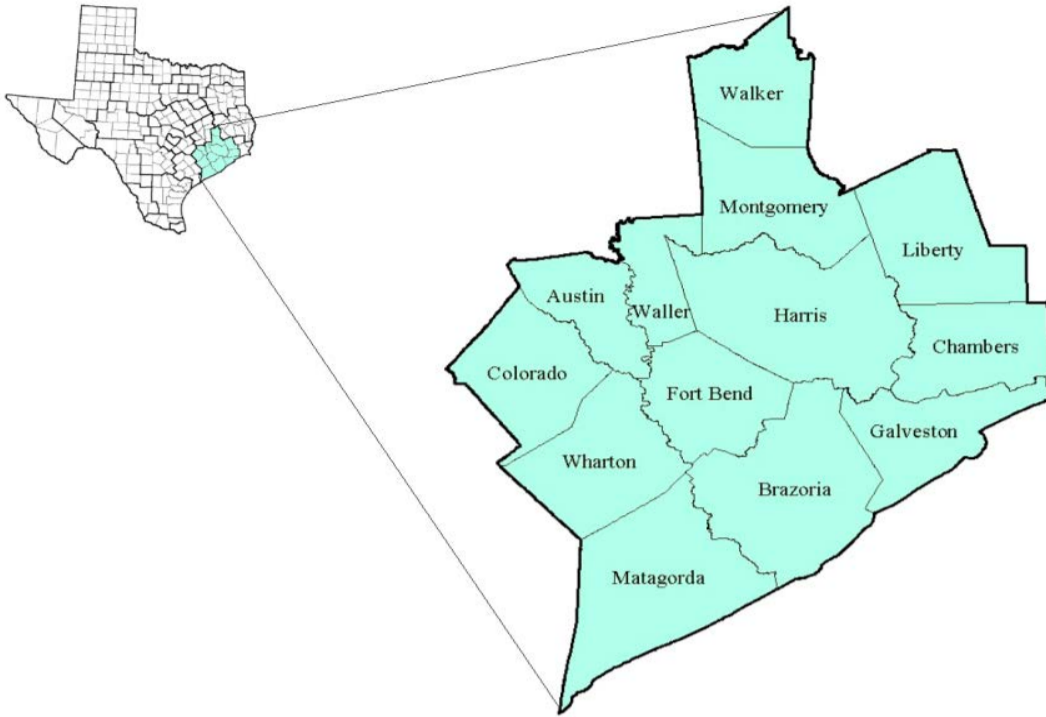


# Gulf Coast Workforce Development Area

April 2017



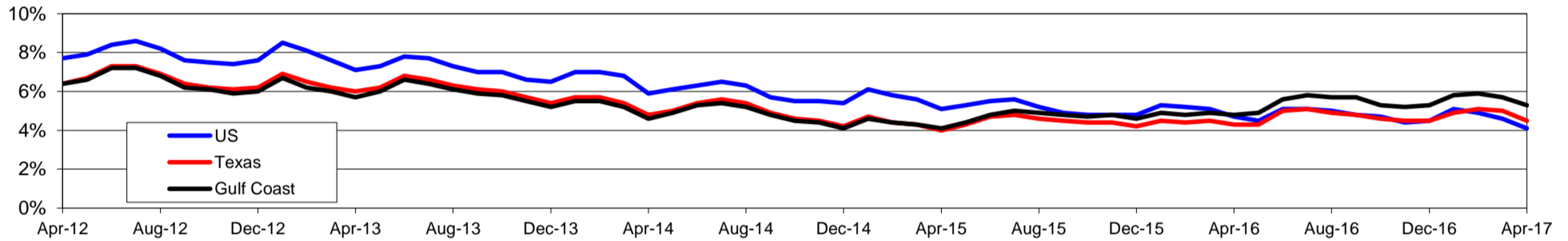
WDA Labor Force Statistics				
	Apr-17	Mar-17	Apr-16	OTY
CLF	3,408,985	3,401,020	3,349,620	59,365
Employed	3,229,349	3,206,746	3,187,233	42,116
Unemployed	179,636	194,274	162,387	17,249
Rate	5.3%	5.7%	4.8%	0.5%

Texas Labor Force Statistics				
	Apr-17	Mar-17	Apr-16	OTY
CLF	13,506,742	13,514,563	13,236,855	269,887
Employed	12,895,003	12,838,948	12,672,854	222,149
Unemployed	611,739	675,615	564,001	47,738
Rate	4.5%	5.0%	4.3%	0.2%

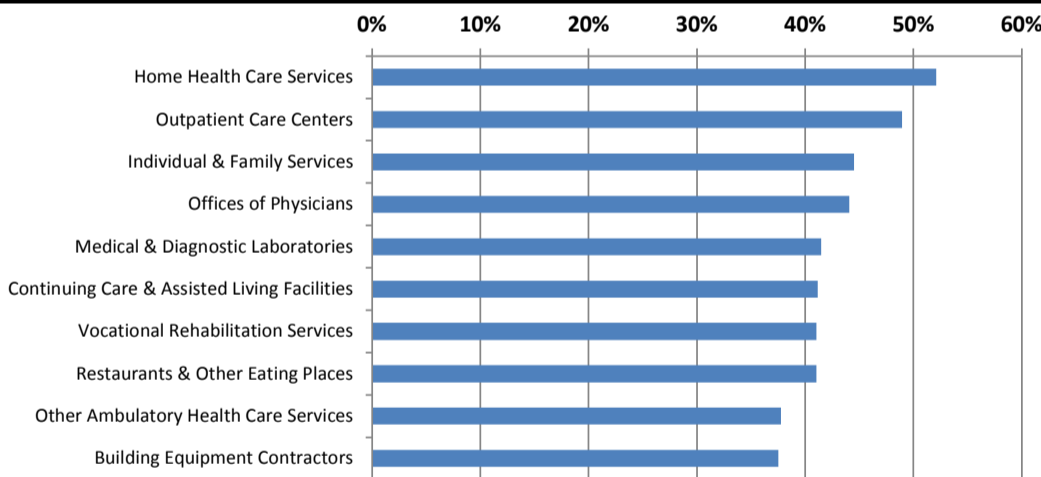
US Labor Force Statistics				
	Apr-17	Mar-17	Apr-16	OTY
CLF	159,817,000	159,912,000	158,488,000	1,329,000
Employed	153,262,000	152,628,000	151,075,000	2,187,000
Unemployed	6,555,000	7,284,000	7,413,000	-858,000
Rate	4.1%	4.6%	4.7%	-0.6%

Continued Claims for the Week of the 12th				
	Apr-17	Mar-17	Apr-16	OTY
WDA	36,400	37,819	50,043	-13,643
Texas	122,950	132,086	145,342	-22,392

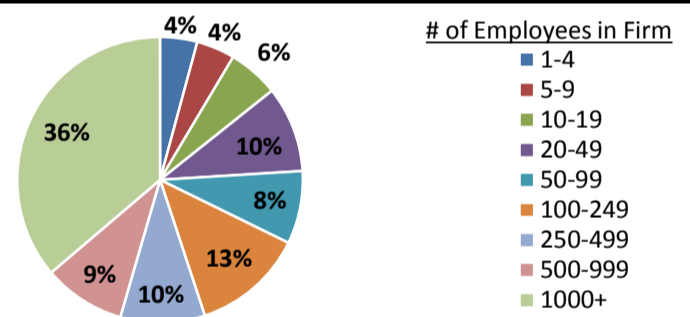
## Historical Unemployment Rates



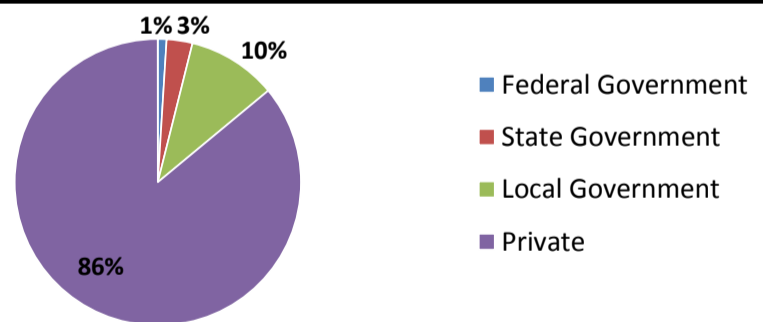
## Projected Fastest Growing Industries in WDA (% growth 2014-2024)



## Employment by Size Class (4th Quarter 2016)



## Employment by Ownership (4th Quarter 2016)



## Average Weekly Wage (4th Quarter 2016)

	Q4 2016	Q3 2016	Q4 2015	Change	
				Quarter	Year
WDA	\$1,239	\$1,196	\$1,297	\$43	-\$58
Texas	\$1,072	\$1,042	\$1,099	\$31	-\$27
US	N/A	\$1,027	\$1,083	N/A	N/A

## Employment by Industry (4th Quarter 2016, Percent Change)

Industry	Employment	% of total	% Change	
			Quarter	Year
Natural resources and mining	89,471	3.0%	-1.4%	-10.6%
Construction	216,042	7.3%	-1.3%	-3.4%
Manufacturing	219,874	7.5%	-1.4%	-7.6%
Trade, transportation and utilities	631,067	21.4%	1.9%	-0.4%
Information	33,304	1.1%	-1.3%	0.1%
Financial activities	153,360	5.2%	0.1%	1.5%
Professional and business services	452,876	15.4%	-0.2%	-1.7%
Education and health services	663,051	22.5%	3.8%	2.5%
Leisure and hospitality	316,184	10.7%	-2.7%	2.2%
Other services	85,791	2.9%	-0.3%	1.2%
Public administration	84,714	2.9%	1.0%	3.4%
<b>Total</b>	<b>2,945,734</b>	<b>100.0%</b>	<b>0.7%</b>	<b>-0.6%</b>

## Employment by Industry (4th Quarter 2016)

