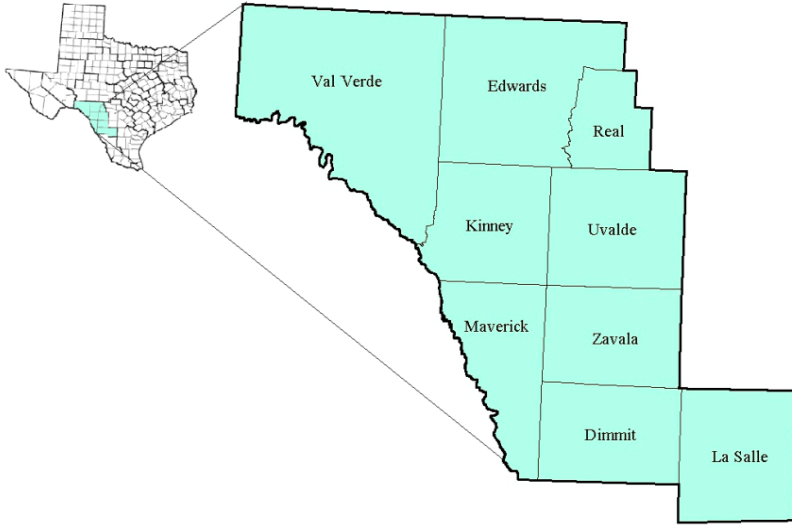


# Middle Rio Grande Workforce Development Area

August 2017



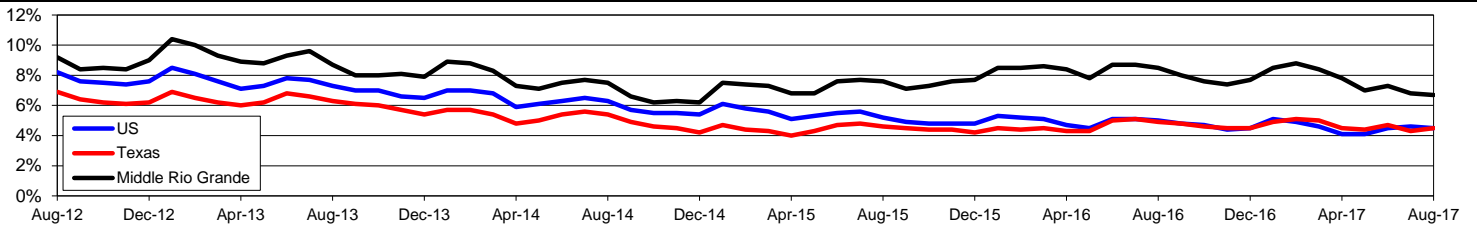
WDA Labor Force Statistics				
	Aug-17	Jul-17	Aug-16	OTY
CLF	70,924	71,156	72,012	-1,088
Employed	66,138	66,311	65,919	219
Unemployed	4,786	4,845	6,093	-1,307
Rate	6.7%	6.8%	8.5%	-1.8%

Texas Labor Force Statistics				
	Aug-17	Jul-17	Aug-16	OTY
CLF	13,406,779	13,434,624	13,295,171	111,608
Employed	12,802,022	12,850,647	12,638,955	163,067
Unemployed	604,757	583,977	656,216	-51,459
Rate	4.5%	4.3%	4.9%	-0.4%

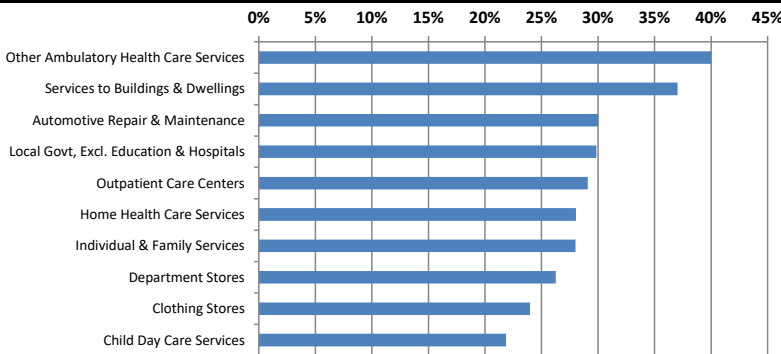
US Labor Force Statistics				
	Aug-17	Jul-17	Aug-16	OTY
CLF	160,863,000	161,911,000	159,800,000	1,063,000
Employed	153,576,000	154,470,000	151,804,000	1,772,000
Unemployed	7,287,000	7,441,000	7,996,000	-709,000
Rate	4.5%	4.6%	5.0%	-0.5%

Continued Claims for the Week of the 12th				
	Aug-17	Jul-17	Aug-16	OTY
WDA	979	1,266	1,534	-555
Texas	115,986	124,432	148,897	-32,911

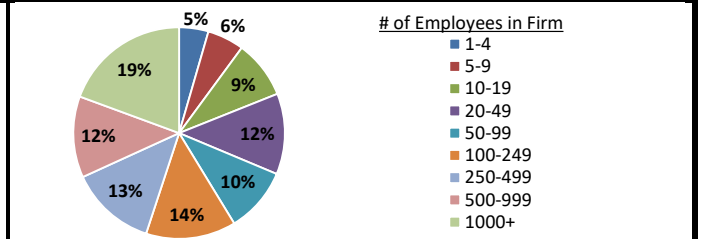
## Historical Unemployment Rates



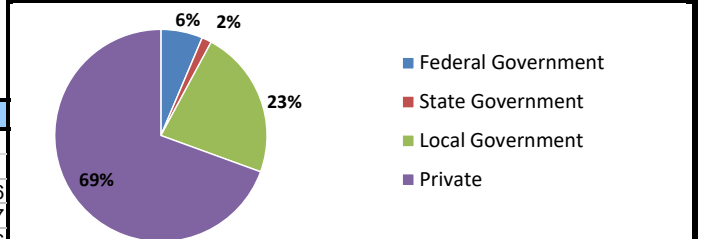
## Projected Fastest Growing Industries in WDA (% growth 2014-2024)



## Employment by Size Class (4th Quarter 2016)



## Employment by Ownership (4th Quarter 2016)



## Average Weekly Wage (4th Quarter 2016)

	Q4 2016	Q3 2016	Q4 2015	Change	
				Quarter	Year
WDA	\$715	\$712	\$732	\$3	-\$16
Texas	\$1,072	\$1,042	\$1,099	\$31	-\$27
US	\$1,067	\$1,027	\$1,083	\$40	-\$16

## Employment by Industry (4th Quarter 2016, Percent Change)

Industry	Employment	% of total	% Change	
			Quarter	Year
Natural resources and mining	3,994	6.8%	4.6%	-4.6%
Construction	1,619	2.8%	-4.7%	-20.7%
Manufacturing	3,505	6.0%	3.0%	0.1%
Trade, transportation and utilities	11,364	19.5%	0.9%	-1.6%
Information	390	0.7%	-2.3%	11.1%
Financial activities	1,939	3.3%	-0.6%	2.6%
Professional and business services	2,939	5.0%	0.7%	7.7%
Education and health services	18,911	32.4%	6.5%	0.9%
Leisure and hospitality	6,472	11.1%	-2.2%	1.2%
Other services	972	1.7%	-3.2%	-3.5%
Public administration	6,231	10.7%	-0.1%	-0.6%
<b>Total</b>	<b>58,336</b>	<b>100.0%</b>	<b>2.2%</b>	<b>-0.6%</b>

## Employment by Industry (4th Quarter 2016)

