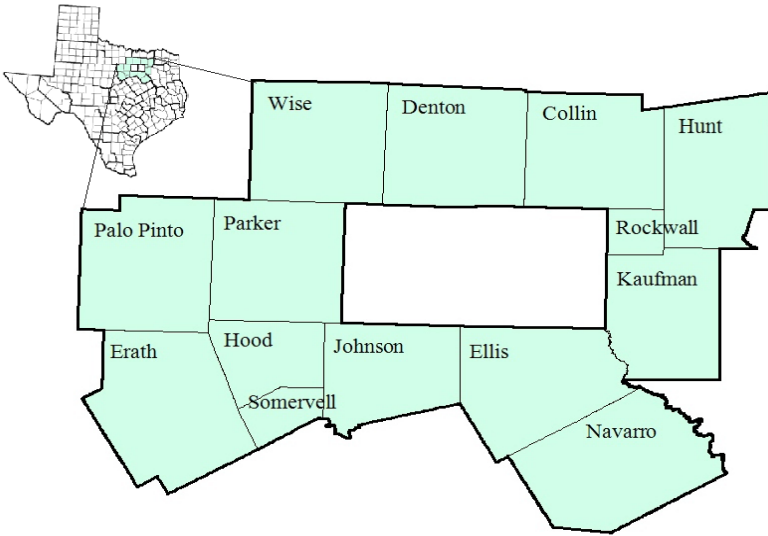


# North Central Texas Workforce Development Area

March 2018



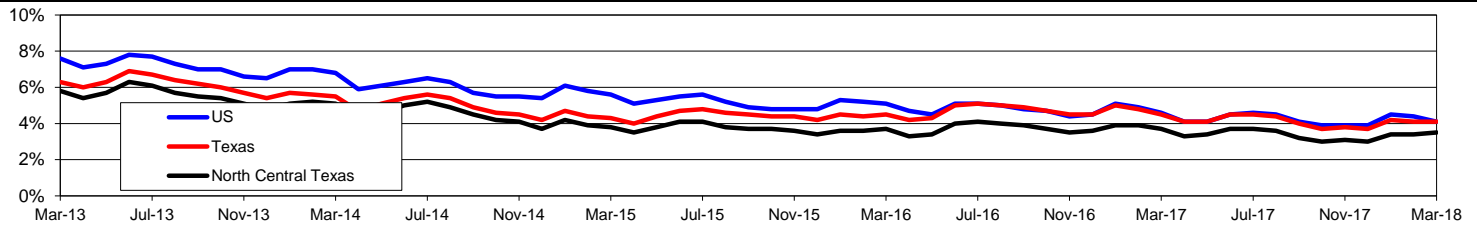
WDA Labor Force Statistics				
	Mar-18	Feb-18	Mar-17	OTY
CLF	1,522,566	1,519,792	1,473,918	48,648
Employed	1,468,530	1,467,412	1,419,130	49,400
Unemployed	54,036	52,380	54,788	-752
Rate	3.5%	3.4%	3.7%	-0.2%

Texas Labor Force Statistics				
	Mar-18	Feb-18	Mar-17	OTY
CLF	13,834,783	13,810,899	13,517,746	317,037
Employed	13,265,346	13,240,944	12,904,419	360,927
Unemployed	569,437	569,955	613,327	-43,890
Rate	4.1%	4.1%	4.5%	-0.4%

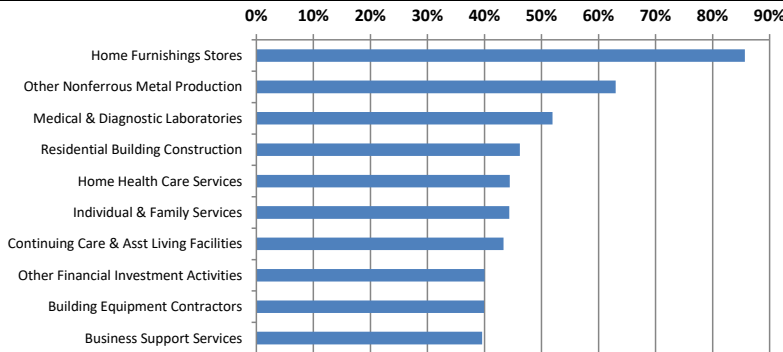
US Labor Force Statistics				
	Mar-18	Feb-18	Mar-17	OTY
CLF	161,548,000	161,494,000	159,912,000	1,636,000
Employed	154,877,000	154,403,000	152,628,000	2,249,000
Unemployed	6,671,000	7,091,000	7,284,000	-613,000
Rate	4.1%	4.4%	4.6%	-0.5%

Continued Claims for the Week of the 12th				
	Mar-18	Feb-18	Mar-17	OTY
WDA	10,739	9,950	11,034	-295
Texas	101,803	104,413	122,322	-20,519

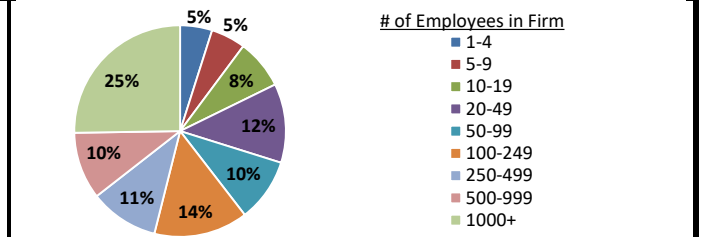
## Historical Unemployment Rates



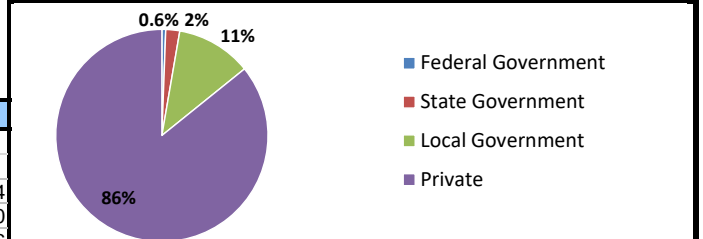
## Projected Fastest Growing Industries in WDA (% growth 2014-2024)



## Employment by Size Class (3rd Quarter 2017)



## Employment by Ownership (3rd Quarter 2017)



## Average Weekly Wage (3rd Quarter 2017)

	Q3 2017	Q2 2017	Q3 2016	Change	
				Quarter	Year
WDA	\$1,004	\$991	\$1,008	\$13	-\$4
Texas	\$1,032	\$1,027	\$1,042	\$5	-\$10
US	\$1,021	\$1,020	\$1,027	\$1	-\$6

## Employment by Industry (3rd Quarter 2017, Percent Change)

Industry	Employment	% of total	% Change	
			Quarter	Year
Natural resources and mining	12,110	1.3%	4.5%	17.8%
Construction	54,627	5.8%	3.6%	8.6%
Manufacturing	81,974	8.8%	0.7%	1.7%
Trade, transportation and utilities	195,551	20.9%	1.2%	3.8%
Information	21,970	2.4%	-1.1%	3.5%
Financial activities	64,976	7.0%	3.5%	5.1%
Professional and business services	122,609	13.1%	1.5%	3.2%
Education and health services	214,454	23.0%	-4.1%	3.6%
Leisure and hospitality	115,693	12.4%	0.4%	4.1%
Other services	25,547	2.7%	1.3%	2.6%
Public administration	24,407	2.6%	0.6%	3.3%
<b>Total</b>	<b>933,918</b>	<b>100.0%</b>	<b>0.1%</b>	<b>4.0%</b>

## Employment by Industry (3rd Quarter 2017)

