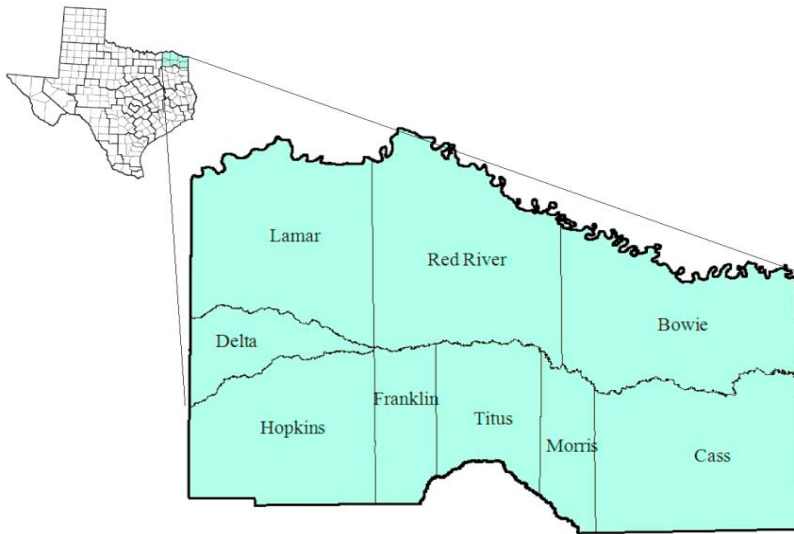


# North East Texas Workforce Development Area

October 2017



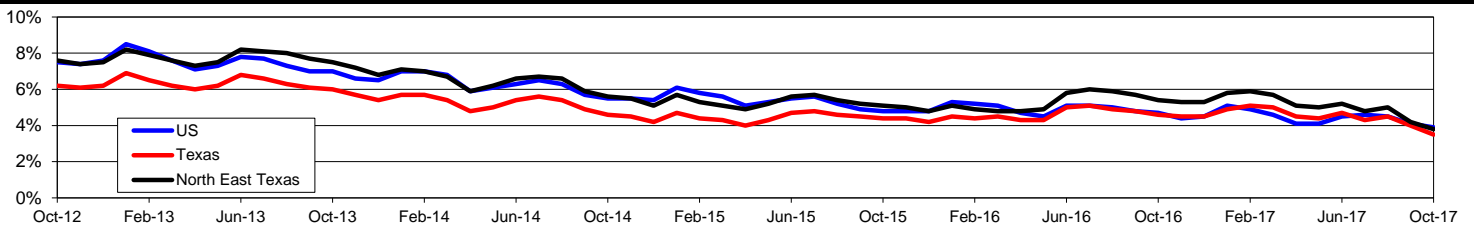
WDA Labor Force Statistics				
	Oct-17	Sep-17	Oct-16	OTY
CLF	120,540	121,500	122,185	-1,645
Employed	115,964	116,339	115,591	373
Unemployed	4,576	5,161	6,594	-2,018
Rate	3.8%	4.2%	5.4%	-1.6%

Texas Labor Force Statistics				
	Oct-17	Sep-17	Oct-16	OTY
CLF	13,392,285	13,498,742	13,338,725	53,560
Employed	12,922,084	12,954,820	12,725,859	196,225
Unemployed	470,201	543,922	612,866	-142,665
Rate	3.5%	4.0%	4.6%	-1.1%

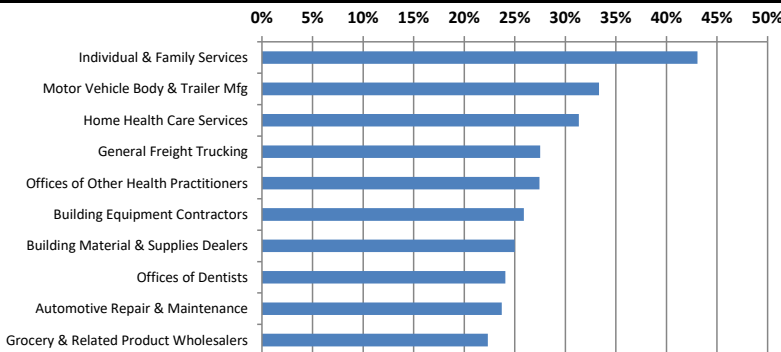
US Labor Force Statistics				
	Oct-17	Sep-17	Oct-16	OTY
CLF	160,465,000	161,049,000	159,783,000	682,000
Employed	154,223,000	154,494,000	152,335,000	1,888,000
Unemployed	6,242,000	6,556,000	7,447,000	-1,205,000
Rate	3.9%	4.1%	4.7%	-0.8%

Continued Claims for the Week of the 12th				
	Oct-17	Sep-17	Oct-16	OTY
WDA	849	834	1,285	-436
Texas	104,802	115,057	124,901	-20,099

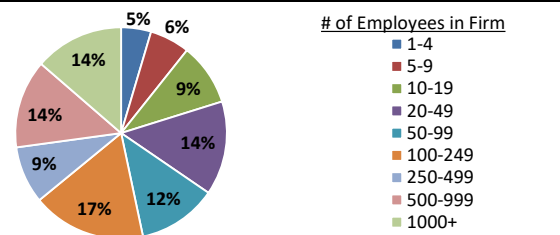
## Historical Unemployment Rates



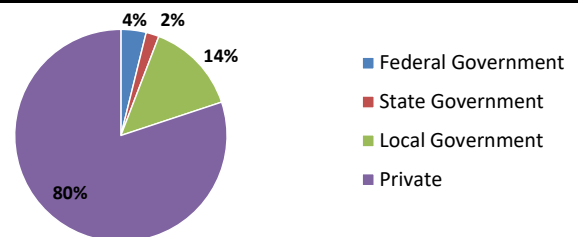
## Projected Fastest Growing Industries in WDA (% growth 2014-2024)



## Employment by Size Class (2nd Quarter 2017)



## Employment by Ownership (2nd Quarter 2017)



## Average Weekly Wage (2nd Quarter 2017)

	Q2 2017	Q1 2017	Q2 2016	Change	
				Quarter	Year
WDA	\$740	\$747	\$713	-\$6	\$28
Texas	\$1,026	\$1,124	\$1,000	-\$99	\$25
US	N/A	\$1,111	\$988	N/A	N/A

## Employment by Industry (2nd Quarter 2017, Percent Change)

Industry	Employment	% of total	% Change	
			Quarter	Year
Natural resources and mining	1,406	1.3%	-0.6%	-7.3%
Construction	4,988	4.5%	4.2%	3.1%
Manufacturing	17,104	15.6%	1.0%	3.6%
Trade, transportation and utilities	23,210	21.1%	0.1%	-1.8%
Information	721	0.7%	-1.9%	-14.7%
Financial activities	4,199	3.8%	0.4%	-1.7%
Professional and business services	6,783	6.2%	-0.4%	-3.3%
Education and health services	30,667	27.9%	-0.4%	1.6%
Leisure and hospitality	11,009	10.0%	3.5%	1.8%
Other services	2,450	2.2%	1.7%	1.8%
Public administration	7,268	6.6%	-0.5%	-3.7%
<b>Total</b>	<b>109,805</b>	<b>100.0%</b>	<b>0.6%</b>	<b>0.2%</b>

## Employment by Industry (2nd Quarter 2017)

