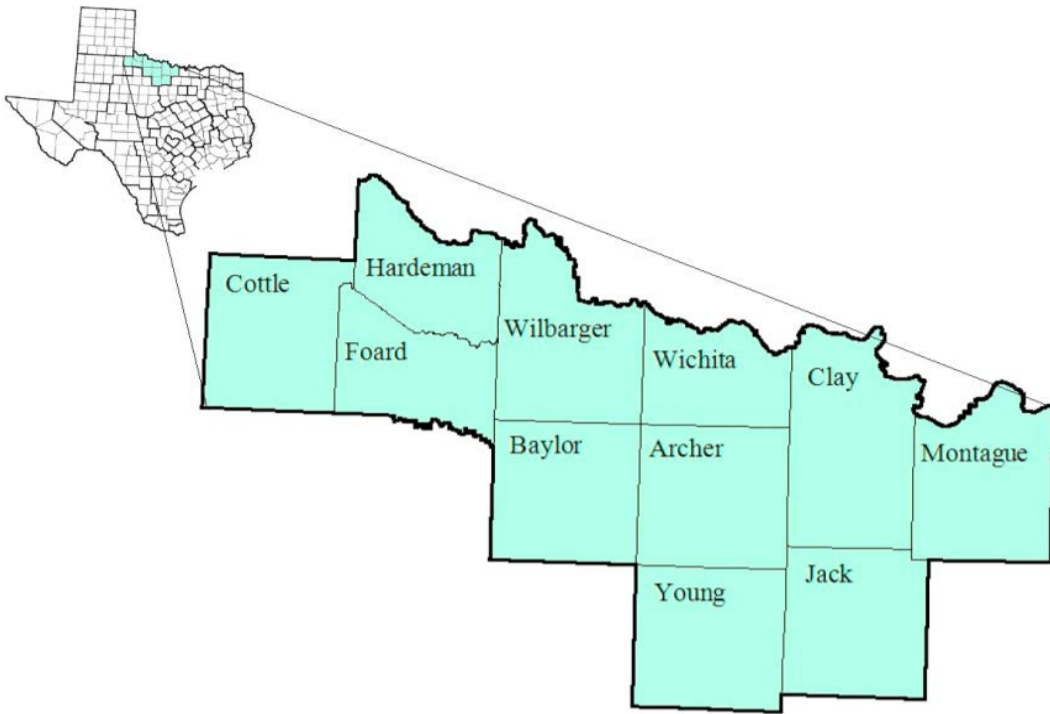


North Texas Workforce Development Area

June 2017



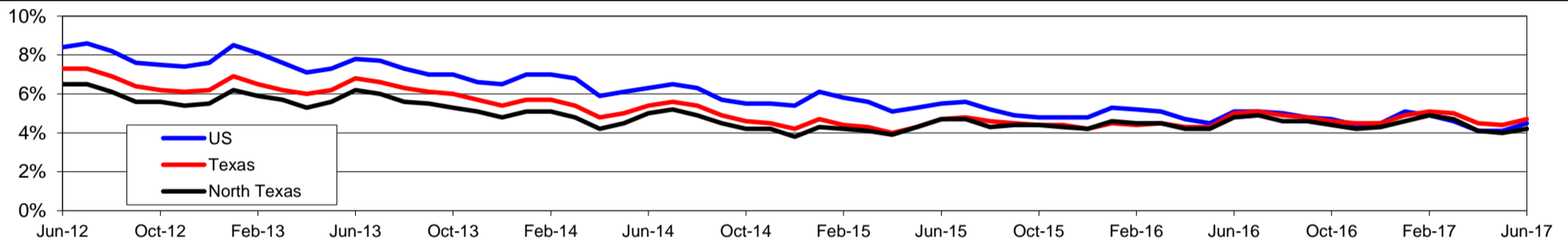
WDA Labor Force Statistics				
	Jun-17	May-17	Jun-16	OTY
CLF	93,420	93,089	95,629	-2,209
Employed	89,467	89,350	91,038	-1,571
Unemployed	3,953	3,739	4,591	-638
Rate	4.2%	4.0%	4.8%	-0.6%

Texas Labor Force Statistics				
	Jun-17	May-17	Jun-16	OTY
CLF	13,464,322	13,450,012	13,319,665	144,657
Employed	12,833,254	12,858,020	12,656,717	176,537
Unemployed	631,068	591,992	662,948	-31,880
Rate	4.7%	4.4%	5.0%	-0.3%

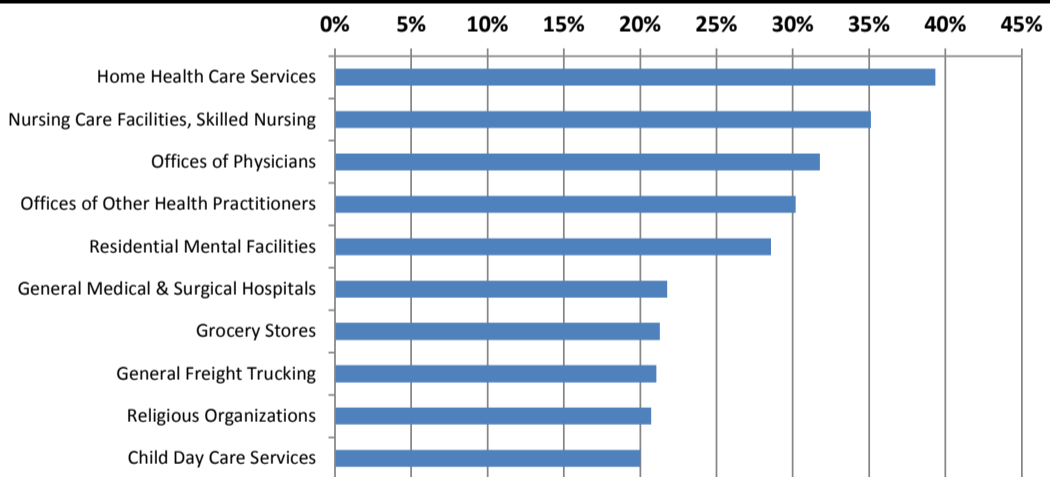
US Labor Force Statistics				
	Jun-17	May-17	Jun-16	OTY
CLF	161,337,000	159,979,000	160,135,000	1,202,000
Employed	154,086,000	153,407,000	151,990,000	2,096,000
Unemployed	7,250,000	6,572,000	8,144,000	-894,000
Rate	4.5%	4.1%	5.1%	-0.6%

Continued Claims for the Week of the 12th				
	Jun-17	May-17	Jun-16	OTY
WDA	550	507	909	-359
Texas	123,045	113,603	157,420	-34,375

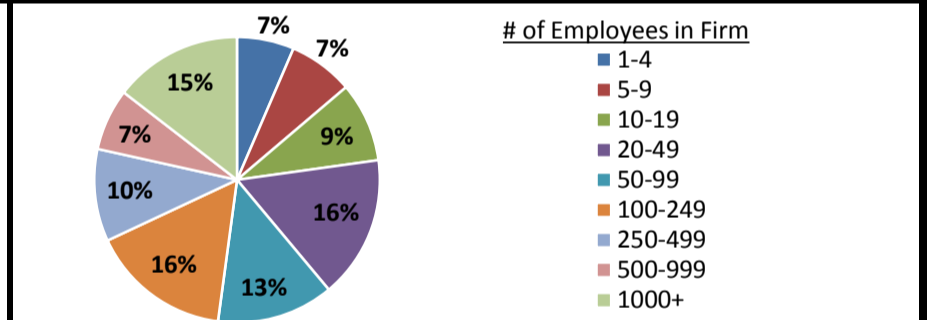
Historical Unemployment Rates



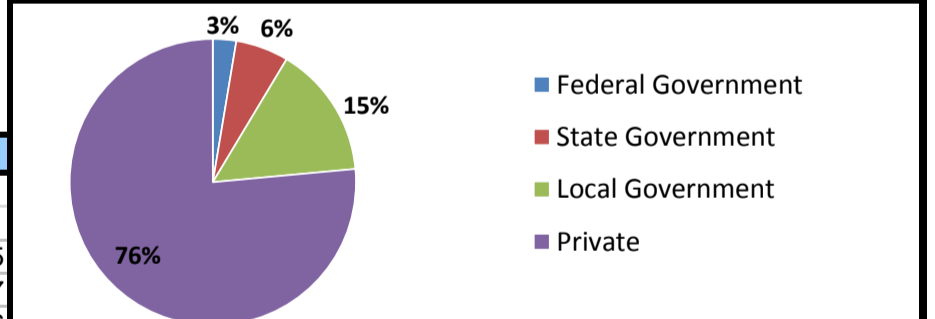
Projected Fastest Growing Industries in WDA (% growth 2014-2024)



Employment by Size Class (4th Quarter 2016)



Employment by Ownership (4th Quarter 2016)



Average Weekly Wage (4th Quarter 2016)

	Q4 2016	Q3 2016	Q4 2015	Change	
				Quarter	Year
WDA	\$767	\$742	\$782	\$25	-\$15
Texas	\$1,072	\$1,042	\$1,099	\$31	-\$27
US	\$1,067	\$1,027	\$1,083	\$40	-\$16

Employment by Industry (4th Quarter 2016, Percent Change)

Industry	Employment	% of total	% Change	
			Quarter	Year
Natural resources and mining	3,910	4.9%	0.6%	-15.7%
Construction	3,530	4.4%	-2.6%	1.7%
Manufacturing	7,291	9.1%	-1.1%	-5.3%
Trade, transportation and utilities	15,861	19.9%	-2.4%	-5.0%
Information	924	1.2%	-4.2%	2.4%
Financial activities	3,510	4.4%	-0.5%	-0.6%
Professional and business services	5,022	6.3%	7.3%	-2.6%
Education and health services	23,579	29.5%	3.3%	0.1%
Leisure and hospitality	8,741	10.9%	-2.6%	3.8%
Other services	2,420	3.0%	-2.6%	-5.1%
Public administration	5,052	6.3%	-1.3%	1.4%
Total	79,840	100.0%	0.2%	-2.2%

Employment by Industry (4th Quarter 2016)

