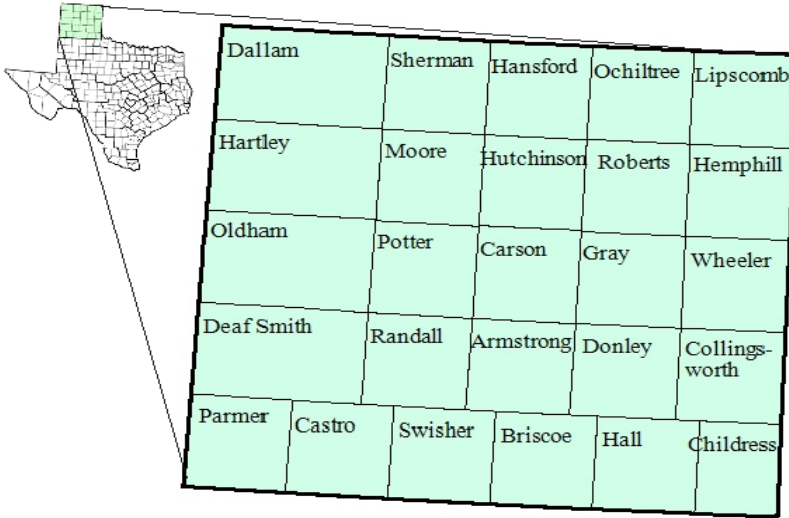


Panhandle Workforce Development Area

October 2017



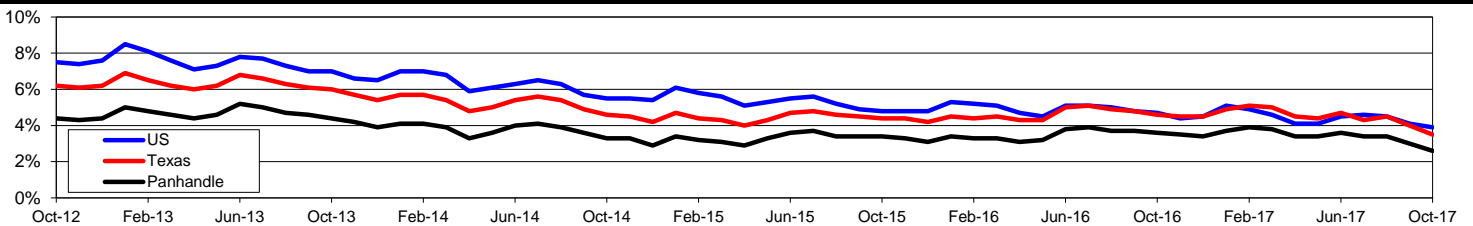
WDA Labor Force Statistics				
	Oct-17	Sep-17	Oct-16	OTY
CLF	207,635	207,858	209,221	-1,586
Employed	202,209	201,666	201,728	481
Unemployed	5,426	6,192	7,493	-2,067
Rate	2.6%	3.0%	3.6%	-1.0%

Texas Labor Force Statistics				
	Oct-17	Sep-17	Oct-16	OTY
CLF	13,392,285	13,498,742	13,338,725	53,560
Employed	12,922,084	12,954,820	12,725,859	196,225
Unemployed	470,201	543,922	612,866	-142,665
Rate	3.5%	4.0%	4.6%	-1.1%

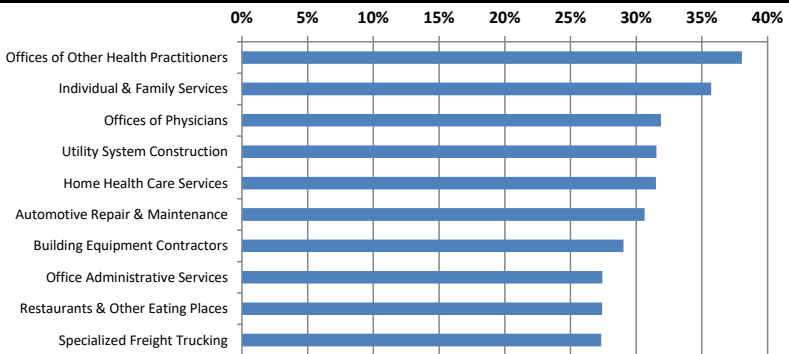
US Labor Force Statistics				
	Oct-17	Sep-17	Oct-16	OTY
CLF	160,465,000	161,049,000	159,783,000	682,000
Employed	154,223,000	154,494,000	152,335,000	1,888,000
Unemployed	6,242,000	6,556,000	7,447,000	-1,205,000
Rate	3.9%	4.1%	4.7%	-0.8%

Continued Claims for the Week of the 12th				
	Oct-17	Sep-17	Oct-16	OTY
WDA	736	756	1,145	-409
Texas	104,802	115,057	124,901	-20,099

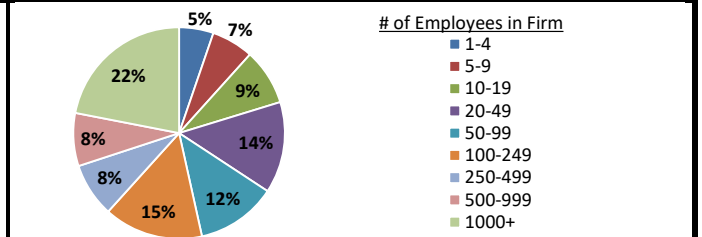
Historical Unemployment Rates



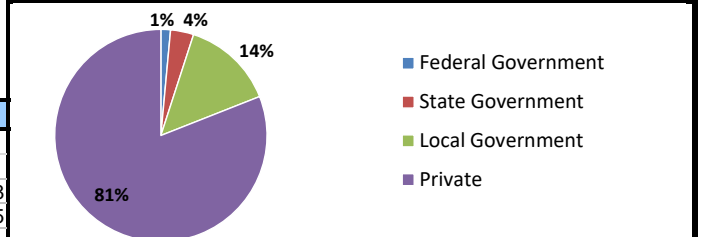
Projected Fastest Growing Industries in WDA (% growth 2014-2024)



Employment by Size Class (2nd Quarter 2017)



Employment by Ownership (2nd Quarter 2017)



Average Weekly Wage (2nd Quarter 2017)

	Q2 2017	Q1 2017	Q2 2016	Change	
				Quarter	Year
WDA	\$834	\$877	\$817	-\$43	\$18
Texas	\$1,026	\$1,124	\$1,000	-\$99	\$25
US	N/A	\$1,111	\$988	N/A	N/A

Employment by Industry (2nd Quarter 2017, Percent Change)

Industry	Employment	% of total	% Change	
			Quarter	Year
Natural resources and mining	14,955	8.0%	2.0%	1.3%
Construction	11,418	6.1%	-0.1%	-2.1%
Manufacturing	24,399	13.1%	1.2%	3.7%
Trade, transportation and utilities	37,187	19.9%	-0.3%	-4.6%
Information	1,818	1.0%	1.5%	0.2%
Financial activities	8,528	4.6%	0.3%	-0.5%
Professional and business services	11,649	6.2%	-1.1%	-2.0%
Education and health services	42,882	22.9%	-0.3%	0.7%
Leisure and hospitality	18,542	9.9%	6.2%	-0.8%
Other services	6,314	3.4%	14.7%	12.6%
Public administration	9,184	4.9%	1.5%	0.8%
Total	186,876	100.0%	1.2%	-0.2%

Employment by Industry (2nd Quarter 2017)

