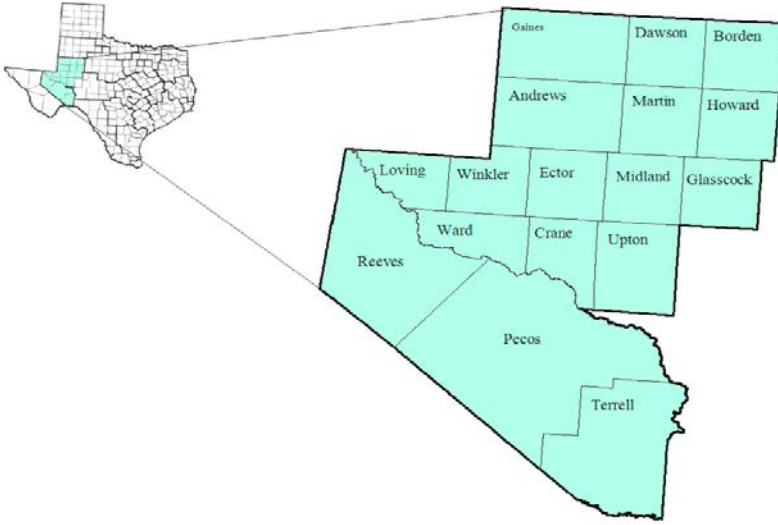


Permian Basin Workforce Development Area

April 2018



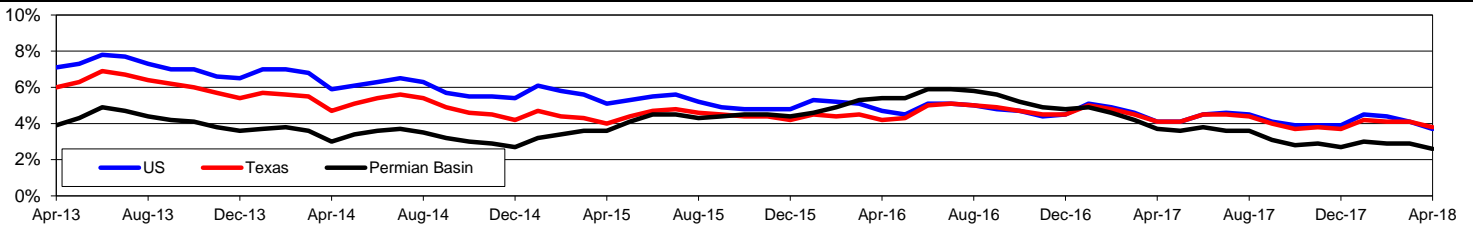
WDA Labor Force Statistics				
	Apr-18	Mar-18	Apr-17	OTY
CLF	246,222	243,025	230,024	16,198
Employed	239,892	235,879	221,440	18,452
Unemployed	6,330	7,146	8,584	-2,254
Rate	2.6%	2.9%	3.7%	-1.1%

Texas Labor Force Statistics				
	Apr-18	Mar-18	Apr-17	OTY
CLF	13,860,323	13,836,504	13,527,232	333,091
Employed	13,340,165	13,267,080	12,967,846	372,319
Unemployed	520,158	569,424	559,386	-39,228
Rate	3.8%	4.1%	4.1%	-0.3%

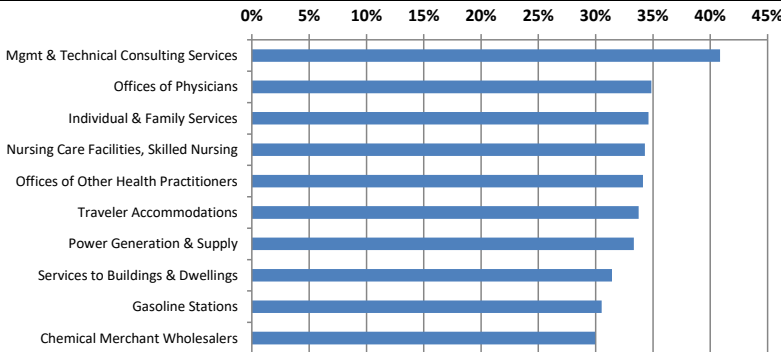
US Labor Force Statistics				
	Apr-18	Mar-18	Apr-17	OTY
CLF	161,280,000	161,548,000	159,817,000	1,463,000
Employed	155,348,000	154,877,000	153,262,000	2,086,000
Unemployed	5,932,000	6,671,000	6,555,000	-623,000
Rate	3.7%	4.1%	4.1%	-0.4%

Continued Claims for the Week of the 12th				
	Apr-18	Mar-18	Apr-17	OTY
WDA	588	707	1,193	-605
Texas	92,281	102,696	116,413	-24,132

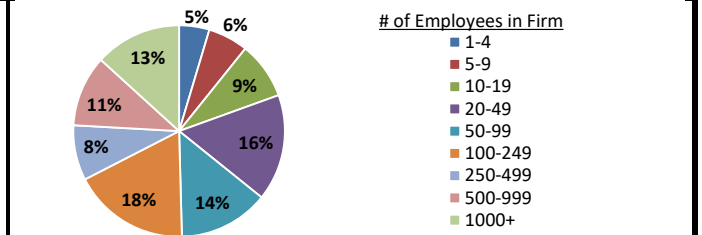
Historical Unemployment Rates



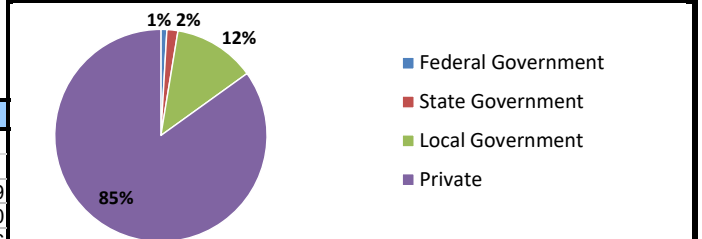
Projected Fastest Growing Industries in WDA (% growth 2014-2024)



Employment by Size Class (3rd Quarter 2017)



Employment by Ownership (3rd Quarter 2017)



Average Weekly Wage (3rd Quarter 2017)

	Q3 2017	Q2 2017	Q3 2016	Change	
				Quarter	Year
WDA	\$1,135	\$1,138	\$1,056	-\$3	\$79
Texas	\$1,032	\$1,027	\$1,042	\$5	-\$10
US	\$1,021	\$1,020	\$1,027	\$1	-\$6

Employment by Industry (3rd Quarter 2017, Percent Change)

Industry	Employment	% of total	% Change	
			Quarter	Year
Natural resources and mining	43,692	20.1%	7.1%	21.1%
Construction	16,345	7.5%	7.1%	12.6%
Manufacturing	9,457	4.3%	2.6%	9.1%
Trade, transportation and utilities	46,341	21.3%	2.7%	5.1%
Information	2,138	1.0%	0.9%	14.9%
Financial activities	9,025	4.1%	1.5%	5.2%
Professional and business services	14,811	6.8%	1.3%	9.3%
Education and health services	38,221	17.6%	-2.8%	0.1%
Leisure and hospitality	23,445	10.8%	3.6%	7.4%
Other services	6,776	3.1%	2.4%	8.8%
Public administration	7,335	3.4%	-1.1%	-2.7%
Total	217,586	100.0%	2.6%	8.2%

Employment by Industry (3rd Quarter 2017)

