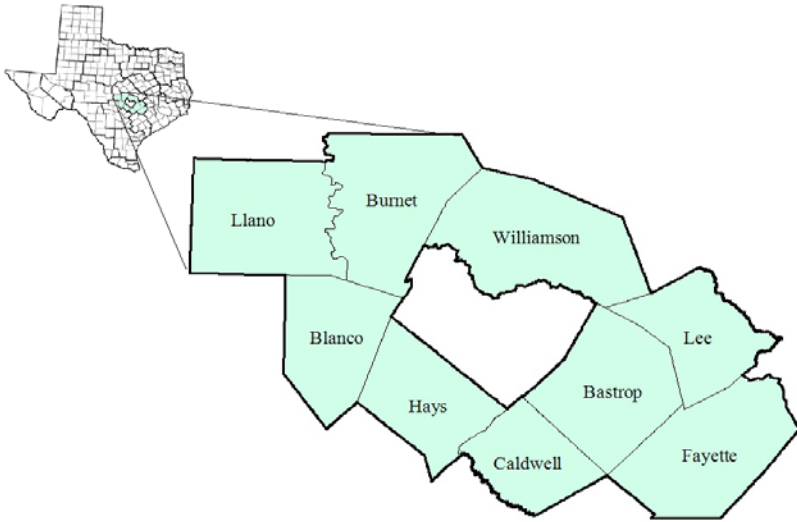


# Rural Capital Workforce Development Area

March 2018



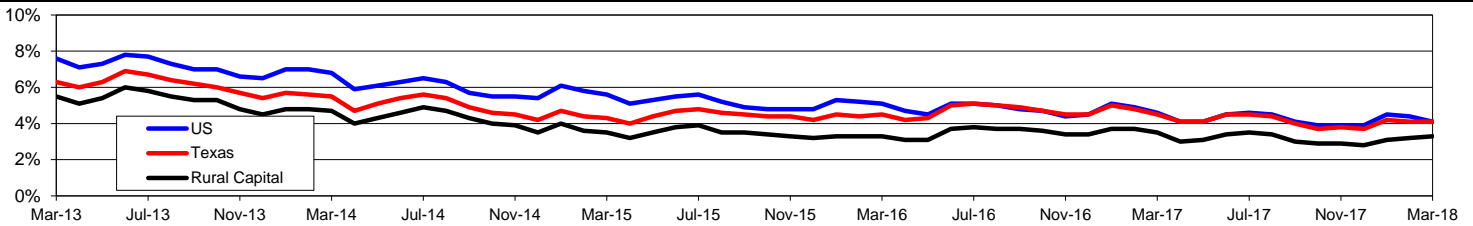
WDA Labor Force Statistics				
	Mar-18	Feb-18	Mar-17	OTY
CLF	529,059	527,983	510,001	19,058
Employed	511,861	511,154	492,311	19,550
Unemployed	17,198	16,829	17,690	-492
Rate	3.3%	3.2%	3.5%	-0.2%

Texas Labor Force Statistics				
	Mar-18	Feb-18	Mar-17	OTY
CLF	13,834,783	13,810,899	13,517,746	317,037
Employed	13,265,346	13,240,944	12,904,419	360,927
Unemployed	569,437	569,955	613,327	-43,890
Rate	4.1%	4.1%	4.5%	-0.4%

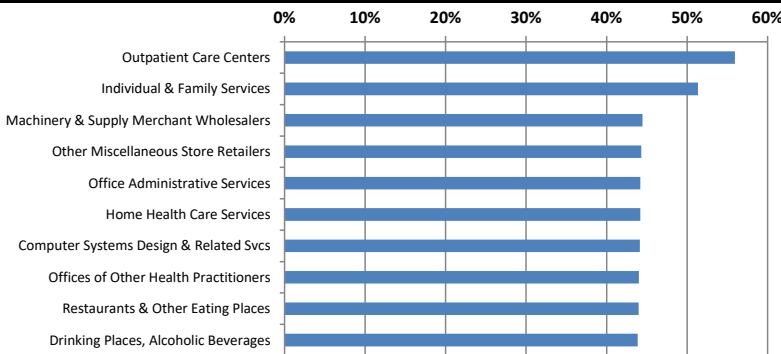
US Labor Force Statistics				
	Mar-18	Feb-18	Mar-17	OTY
CLF	161,548,000	161,494,000	159,912,000	1,636,000
Employed	154,877,000	154,403,000	152,628,000	2,249,000
Unemployed	6,671,000	7,091,000	7,284,000	-613,000
Rate	4.1%	4.4%	4.6%	-0.5%

Continued Claims for the Week of the 12th				
	Mar-18	Feb-18	Mar-17	OTY
WDA	2,843	2,733	3,171	-328
Texas	101,803	104,413	122,322	-20,519

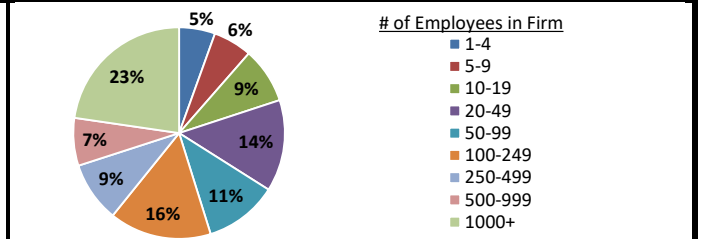
## Historical Unemployment Rates



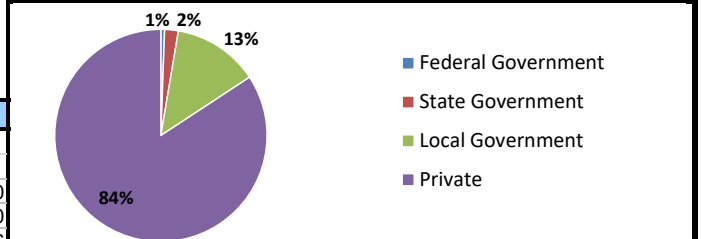
## Projected Fastest Growing Industries in WDA (% growth 2014-2024)



## Employment by Size Class (3rd Quarter 2017)



## Employment by Ownership (3rd Quarter 2017)



## Average Weekly Wage (3rd Quarter 2017)

	Q3 2017	Q2 2017	Q3 2016	Change	
				Quarter	Year
WDA	\$901	\$883	\$900	\$18	\$0
Texas	\$1,032	\$1,027	\$1,042	\$5	-\$10
US	\$1,021	\$1,020	\$1,027	\$1	-\$6

## Employment by Industry (3rd Quarter 2017, Percent Change)

Industry	Employment	% of total	% Change	
			Quarter	Year
Natural resources and mining	4,214	1.4%	2.0%	12.2%
Construction	25,622	8.7%	4.7%	9.5%
Manufacturing	21,170	7.2%	1.7%	1.3%
Trade, transportation and utilities	72,138	24.4%	1.2%	3.9%
Information	3,160	1.1%	0.6%	-6.3%
Financial activities	13,263	4.5%	2.8%	3.8%
Professional and business services	28,378	9.6%	-0.2%	1.6%
Education and health services	66,965	22.7%	-5.7%	3.3%
Leisure and hospitality	40,991	13.9%	0.2%	4.6%
Other services	9,505	3.2%	0.6%	2.4%
Public administration	10,148	3.4%	1.2%	3.0%
<b>Total</b>	<b>295,554</b>	<b>100.0%</b>	<b>-0.4%</b>	<b>3.8%</b>

## Employment by Industry (3rd Quarter 2017)

