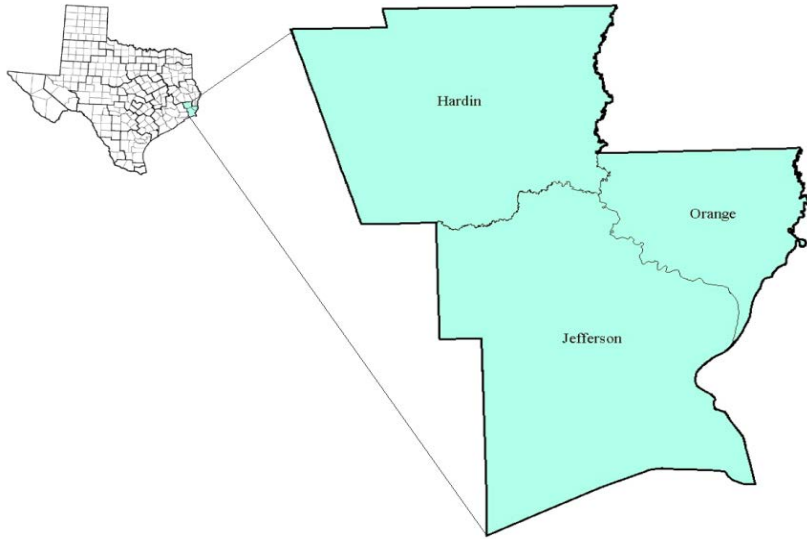


South East Texas Workforce Development Area

October 2017



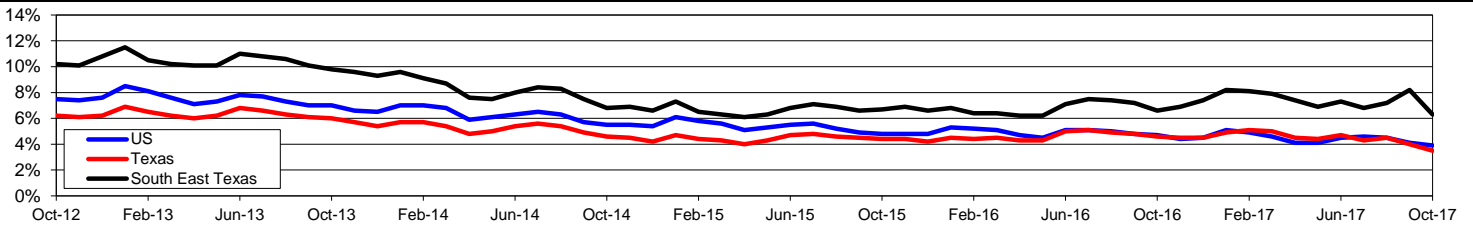
WDA Labor Force Statistics				
	Oct-17	Sep-17	Oct-16	OTY
CLF	166,133	169,005	168,534	-2,401
Employed	155,621	155,130	157,380	-1,759
Unemployed	10,512	13,875	11,154	-642
Rate	6.3%	8.2%	6.6%	-0.3%

Texas Labor Force Statistics				
	Oct-17	Sep-17	Oct-16	OTY
CLF	13,392,285	13,498,742	13,338,725	53,560
Employed	12,922,084	12,954,820	12,725,859	196,225
Unemployed	470,201	543,922	612,866	-142,665
Rate	3.5%	4.0%	4.6%	-1.1%

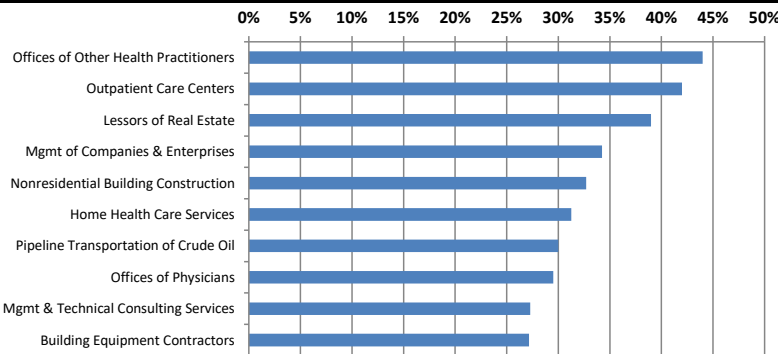
US Labor Force Statistics				
	Oct-17	Sep-17	Oct-16	OTY
CLF	160,465,000	161,049,000	159,783,000	682,000
Employed	154,223,000	154,494,000	152,335,000	1,888,000
Unemployed	6,242,000	6,556,000	7,447,000	-1,205,000
Rate	3.9%	4.1%	4.7%	-0.8%

Continued Claims for the Week of the 12th				
	Oct-17	Sep-17	Oct-16	OTY
WDA	3,563	5,149	2,620	943
Texas	104,802	115,057	124,901	-20,099

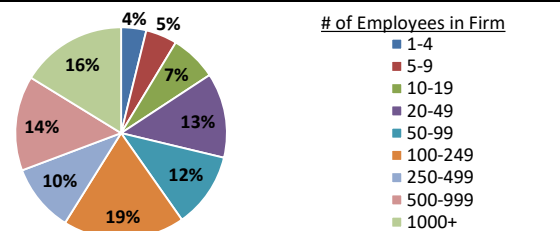
Historical Unemployment Rates



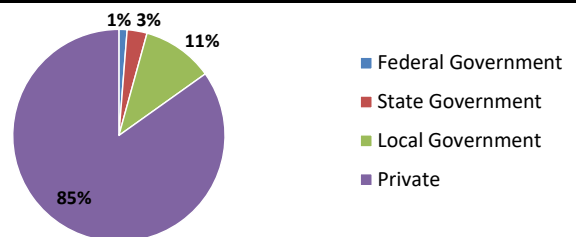
Projected Fastest Growing Industries in WDA (% growth 2014-2024)



Employment by Size Class (2nd Quarter 2017)



Employment by Ownership (2nd Quarter 2017)



Average Weekly Wage (2nd Quarter 2017)

	Q2 2017	Q1 2017	Q2 2016	Change	
				Quarter	Year
WDA	\$999	\$1,091	\$993	-\$92	\$6
Texas	\$1,026	\$1,124	\$1,000	-\$99	\$25
US	N/A	\$1,111	\$988	N/A	N/A

Employment by Industry (2nd Quarter 2017, Percent Change)

Industry	Employment	% of total	% Change	
			Quarter	Year
Natural resources and mining	1,112	0.7%	-0.4%	-13.4%
Construction	17,861	11.3%	2.5%	2.6%
Manufacturing	21,549	13.7%	0.4%	0.3%
Trade, transportation and utilities	31,925	20.2%	-1.2%	-1.7%
Information	1,262	0.8%	-1.3%	-5.9%
Financial activities	5,707	3.6%	0.0%	2.1%
Professional and business services	14,269	9.0%	-0.3%	-0.3%
Education and health services	35,221	22.3%	0.0%	-1.7%
Leisure and hospitality	16,458	10.4%	4.9%	2.4%
Other services	4,938	3.1%	-6.2%	-4.7%
Public administration	7,414	4.7%	0.5%	0.2%
Total	157,716	100.0%	0.4%	-0.4%

Employment by Industry (2nd Quarter 2017)

