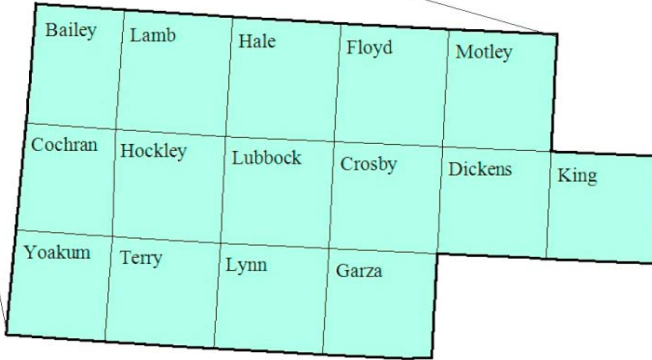


South Plains Workforce Development Area

March 2018



WDA Labor Force Statistics

	Mar-18	Feb-18	Mar-17	OTY
CLF	214,342	211,993	210,586	3,756
Employed	206,343	204,792	202,410	3,933
Unemployed	7,999	7,201	8,176	-177
Rate	3.7%	3.4%	3.9%	-0.2%

Texas Labor Force Statistics

	Mar-18	Feb-18	Mar-17	OTY
CLF	13,834,783	13,810,899	13,517,746	317,037
Employed	13,265,346	13,240,944	12,904,419	360,927
Unemployed	569,437	569,955	613,327	-43,890
Rate	4.1%	4.1%	4.5%	-0.4%

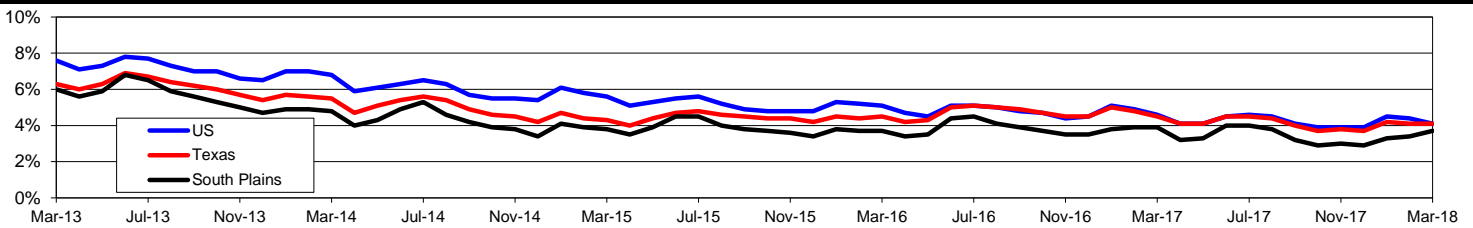
US Labor Force Statistics

	Mar-18	Feb-18	Mar-17	OTY
CLF	161,548,000	161,494,000	159,912,000	1,636,000
Employed	154,877,000	154,403,000	152,628,000	2,249,000
Unemployed	6,671,000	7,091,000	7,284,000	-613,000
Rate	4.1%	4.4%	4.6%	-0.5%

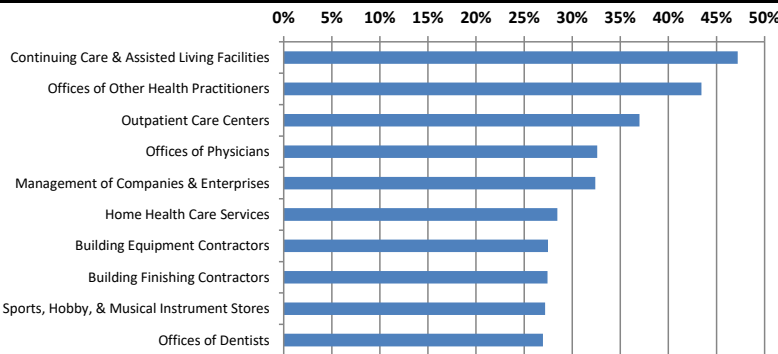
Continued Claims for the Week of the 12th

	Mar-18	Feb-18	Mar-17	OTY
WDA	1,516	997	1,575	-59
Texas	101,803	104,413	122,322	-20,519

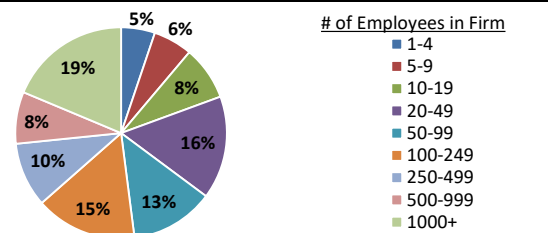
Historical Unemployment Rates



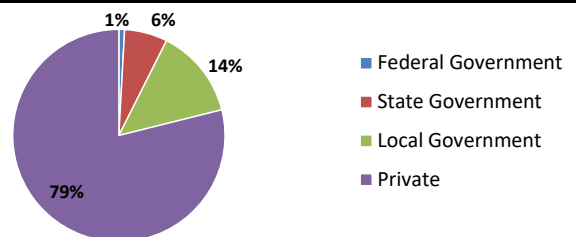
Projected Fastest Growing Industries in WDA (% growth 2014-2024)



Employment by Size Class (3rd Quarter 2017)



Employment by Ownership (3rd Quarter 2017)



Average Weekly Wage (3rd Quarter 2017)

	Q3 2017	Q2 2017	Q3 2016	Change	
				Quarter	Year
WDA	\$793	\$794	\$800	-\$1	-\$8
Texas	\$1,032	\$1,027	\$1,042	\$5	-\$10
US	\$1,021	\$1,020	\$1,027	\$1	-\$6

Employment by Industry (3rd Quarter 2017, Percent Change)

Industry	Employment	% of total	% Change	
			Quarter	Year
Natural resources and mining	10,855	6.0%	5.2%	4.2%
Construction	9,406	5.2%	2.0%	4.9%
Manufacturing	6,295	3.5%	0.0%	1.5%
Trade, transportation and utilities	39,328	21.6%	0.1%	-0.3%
Information	3,171	1.7%	-3.4%	-18.7%
Financial activities	9,166	5.0%	1.0%	2.9%
Professional and business services	13,709	7.5%	1.8%	1.5%
Education and health services	54,082	29.7%	-3.3%	1.1%
Leisure and hospitality	22,509	12.4%	1.6%	5.4%
Other services	6,119	3.4%	-0.5%	1.0%
Public administration	7,412	4.1%	0.0%	-0.4%
Total	182,052	100.0%	-0.3%	1.3%

Employment by Industry (3rd Quarter 2017)

