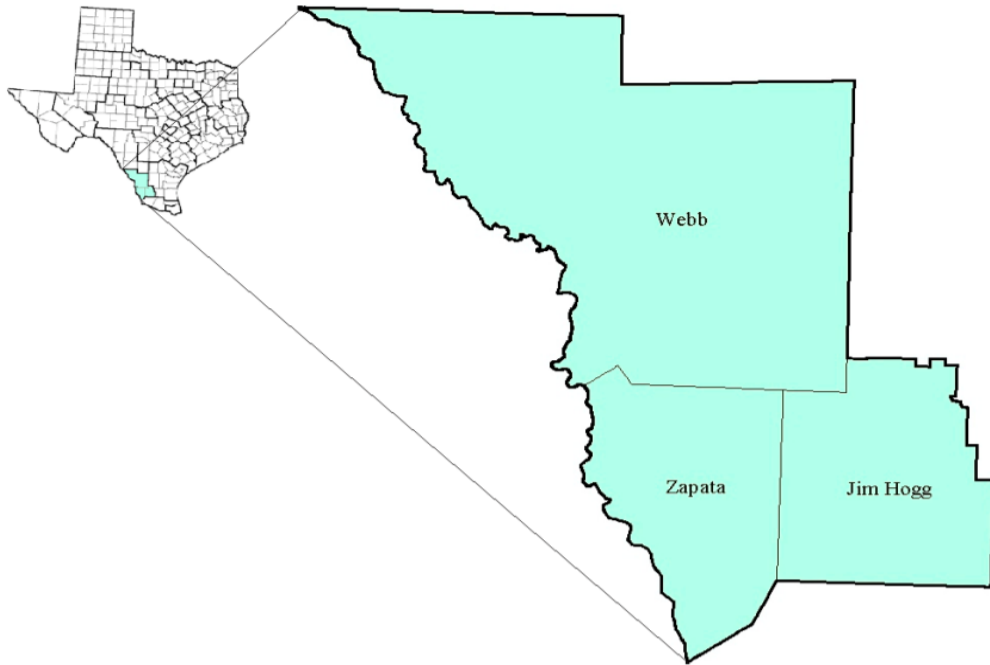


South Texas Workforce Development Area

January 2018



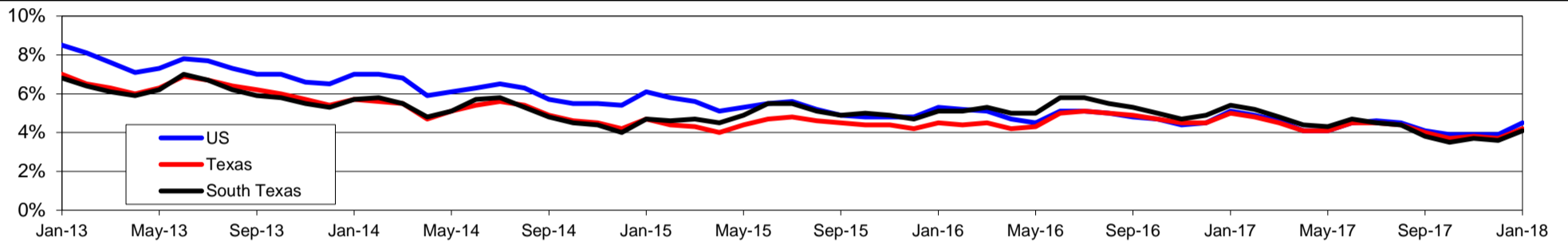
WDA Labor Force Statistics				
	Jan-18	Dec-17	Jan-17	OTY
CLF	122,763	122,189	121,838	925
Employed	117,788	117,850	115,297	2,491
Unemployed	4,975	4,339	6,541	-1,566
Rate	4.1%	3.6%	5.4%	-1.3%

Texas Labor Force Statistics				
	Jan-18	Dec-17	Jan-17	OTY
CLF	13,622,067	13,598,061	13,417,349	204,718
Employed	13,054,089	13,096,216	12,748,985	305,104
Unemployed	567,978	501,845	668,364	-100,386
Rate	4.2%	3.7%	5.0%	-0.8%

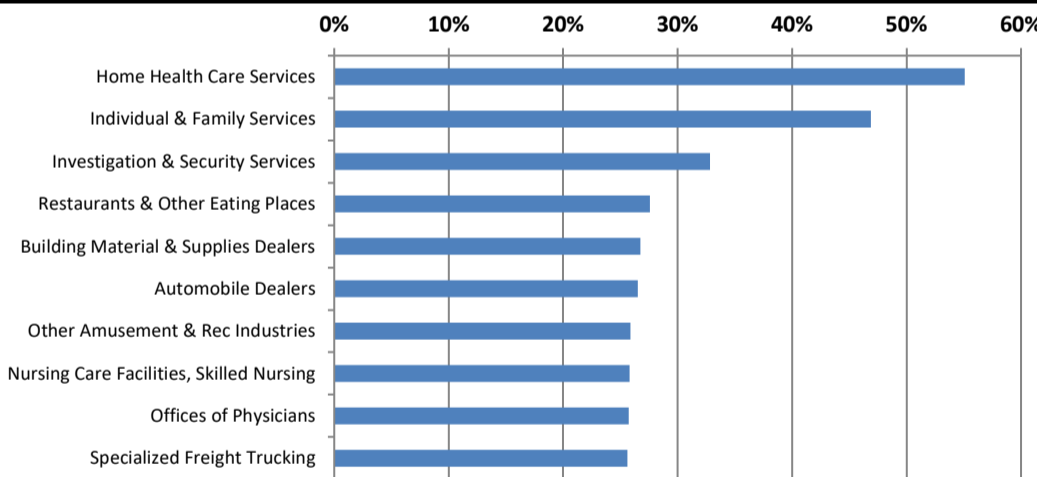
US Labor Force Statistics				
	Jan-18	Dec-17	Jan-17	OTY
CLF	160,037,000	159,880,000	158,676,000	1,361,000
Employed	152,848,000	153,602,000	150,527,000	2,321,000
Unemployed	7,189,000	6,278,000	8,149,000	-960,000
Rate	4.5%	3.9%	5.1%	-0.6%

Continued Claims for the Week of the 12th				
	Jan-18	Dec-17	Jan-17	OTY
WDA	845	744	1,168	-323
Texas	111,828	108,432	132,086	-20,258

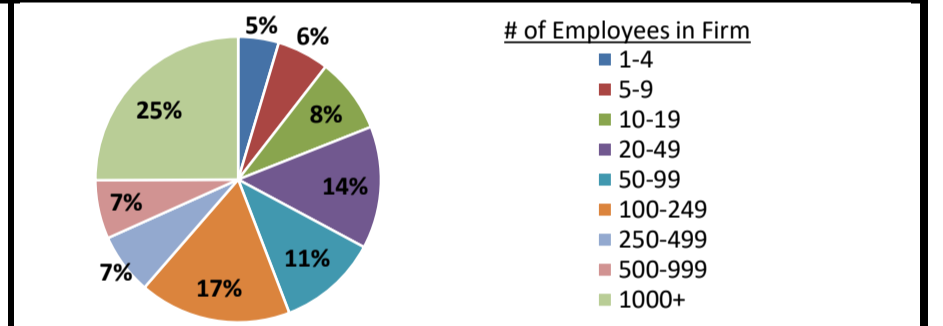
Historical Unemployment Rates



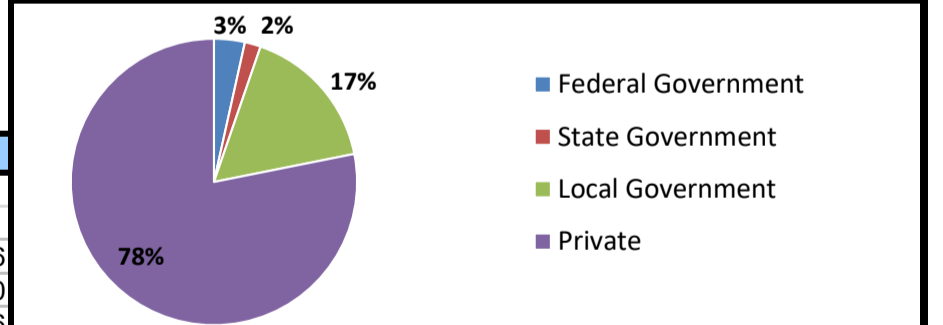
Projected Fastest Growing Industries in WDA (% growth 2014-2024)



Employment by Size Class (3rd Quarter 2017)



Employment by Ownership (3rd Quarter 2017)



Average Weekly Wage (3rd Quarter 2017)

	Q3 2017	Q2 2017	Q3 2016	Change	
				Quarter	Year
WDA	\$681	\$676	\$687	\$5	-\$6
Texas	\$1,032	\$1,027	\$1,042	\$5	-\$10
US	\$1,021	\$1,020	\$1,027	\$1	-\$6

Employment by Industry (3rd Quarter 2017, Percent Change)

Industry	Employment	% of total	% Change	
			Quarter	Year
Natural resources and mining	3,408	3.3%	3.7%	45.3%
Construction	2,622	2.5%	-2.8%	-4.8%
Manufacturing	738	0.7%	-0.4%	-7.1%
Trade, transportation and utilities	31,118	29.7%	0.8%	-1.5%
Information	825	0.8%	-2.4%	9.0%
Financial activities	4,226	4.0%	0.7%	3.7%
Professional and business services	9,697	9.2%	1.4%	5.3%
Education and health services	31,323	29.9%	-2.1%	-0.8%
Leisure and hospitality	12,078	11.5%	0.5%	3.8%
Other services	1,845	1.8%	0.4%	3.8%
Public administration	6,964	6.6%	0.3%	-0.5%
Total	104,844	100.0%	-0.1%	1.3%

Employment by Industry (3rd Quarter 2017)

