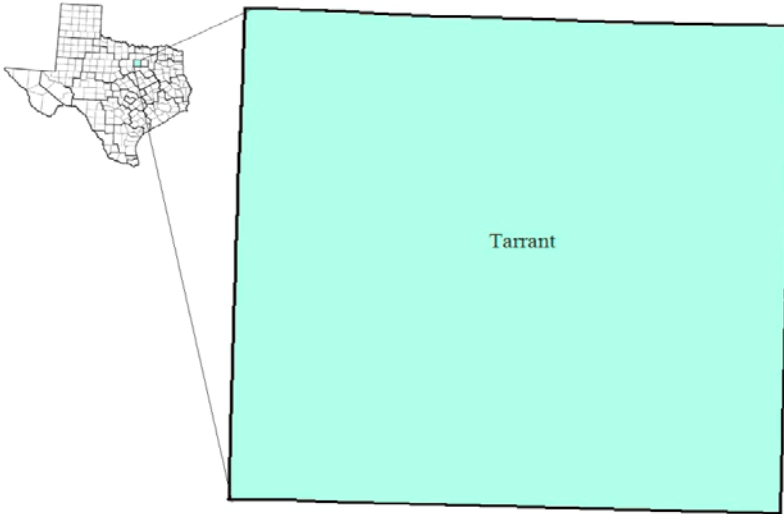


Tarrant County Workforce Development Area

October 2017



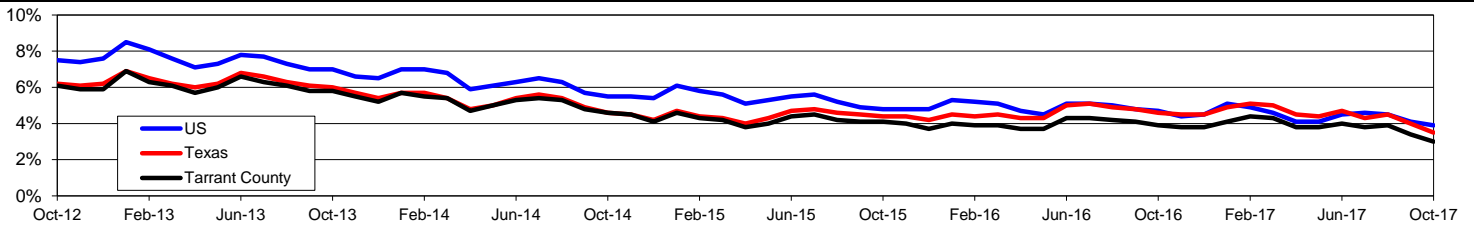
WDA Labor Force Statistics				
	Oct-17	Sep-17	Oct-16	OTY
CLF	1,028,212	1,039,483	1,015,986	12,226
Employed	997,170	1,004,344	976,343	20,827
Unemployed	31,042	35,139	39,643	-8,601
Rate	3.0%	3.4%	3.9%	-0.9%

Texas Labor Force Statistics				
	Oct-17	Sep-17	Oct-16	OTY
CLF	13,392,285	13,498,742	13,338,725	53,560
Employed	12,922,084	12,954,820	12,725,859	196,225
Unemployed	470,201	543,922	612,866	-142,665
Rate	3.5%	4.0%	4.6%	-1.1%

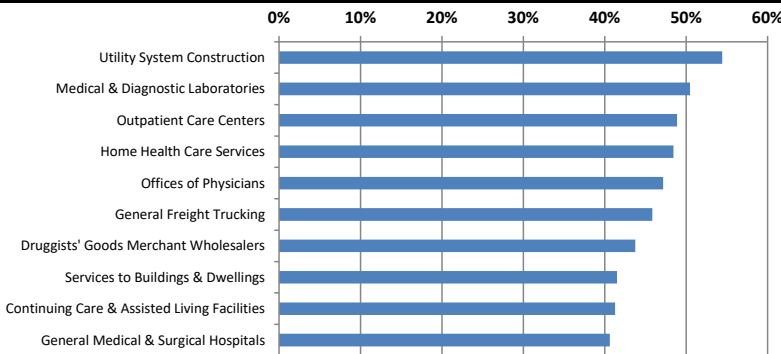
US Labor Force Statistics				
	Oct-17	Sep-17	Oct-16	OTY
CLF	160,465,000	161,049,000	159,783,000	682,000
Employed	154,223,000	154,494,000	152,335,000	1,888,000
Unemployed	6,242,000	6,556,000	7,447,000	-1,205,000
Rate	3.9%	4.1%	4.7%	-0.8%

Continued Claims for the Week of the 12th				
	Oct-17	Sep-17	Oct-16	OTY
WDA	6,801	6,857	7,336	-535
Texas	104,802	115,057	124,901	-20,099

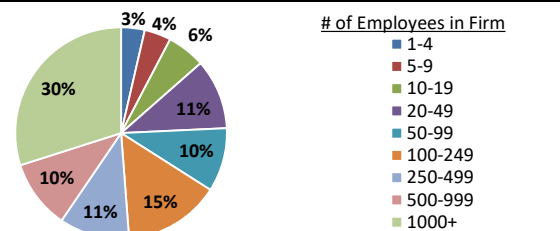
Historical Unemployment Rates



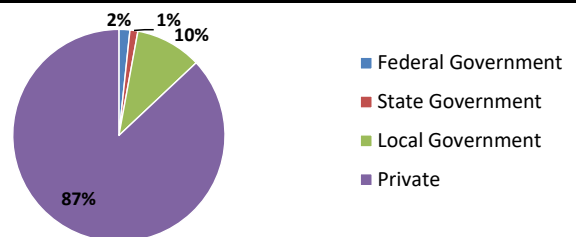
Projected Fastest Growing Industries in WDA (% growth 2014-2024)



Employment by Size Class (2nd Quarter 2017)



Employment by Ownership (2nd Quarter 2017)



Average Weekly Wage (2nd Quarter 2017)

	Q2 2017	Q1 2017	Q2 2016	Change	
				Quarter	Year
WDA	\$1,009	\$1,063	\$972	-\$54	\$37
Texas	\$1,026	\$1,124	\$1,000	-\$99	\$25
US	N/A	\$1,111	\$988	N/A	N/A

Employment by Industry (2nd Quarter 2017, Percent Change)

Industry	Employment	% of total	% Change	
			Quarter	Year
Natural resources and mining	8,523	1.0%	2.8%	-0.6%
Construction	51,006	5.8%	3.8%	5.9%
Manufacturing	81,520	9.3%	1.1%	1.4%
Trade, transportation and utilities	218,457	25.0%	0.6%	2.6%
Information	10,649	1.2%	1.9%	-3.8%
Financial activities	54,281	6.2%	2.5%	4.1%
Professional and business services	98,794	11.3%	0.9%	-1.1%
Education and health services	188,250	21.6%	0.5%	2.6%
Leisure and hospitality	107,504	12.3%	5.3%	2.3%
Other services	25,403	2.9%	2.3%	-0.5%
Public administration	27,834	3.2%	-0.5%	0.6%
Total	872,221	100.0%	1.6%	2.0%

Employment by Industry (2nd Quarter 2017)

