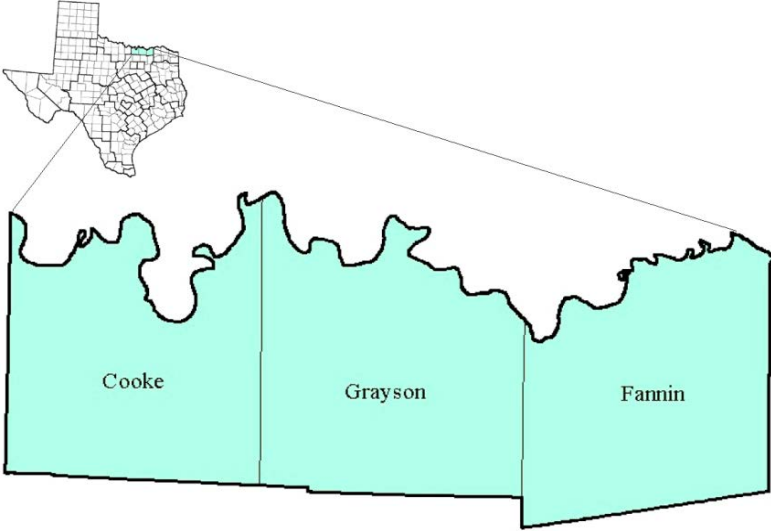


Texoma Workforce Development Area

October 2017



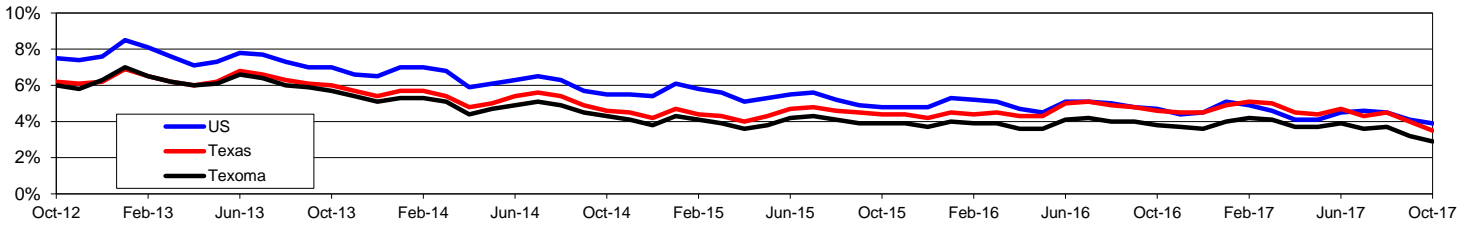
WDA Labor Force Statistics				
	Oct-17	Sep-17	Oct-16	OTY
CLF	94,825	95,816	95,587	-762
Employed	92,056	92,745	91,929	127
Unemployed	2,769	3,071	3,658	-889
Rate	2.9%	3.2%	3.8%	-0.9%

Texas Labor Force Statistics				
	Oct-17	Sep-17	Oct-16	OTY
CLF	13,392,285	13,498,742	13,338,725	53,560
Employed	12,922,084	12,954,820	12,725,859	196,225
Unemployed	470,201	543,922	612,866	-142,665
Rate	3.5%	4.0%	4.6%	-1.1%

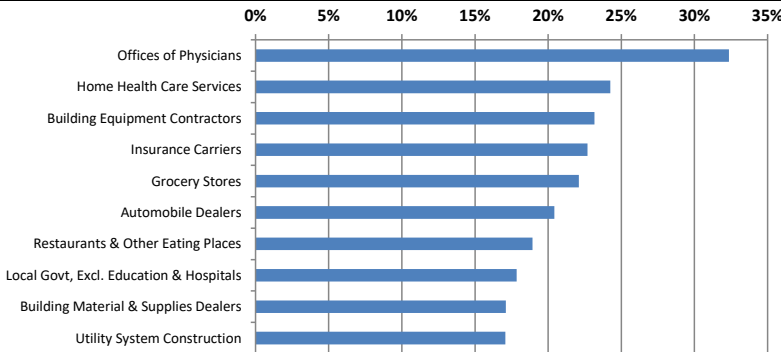
US Labor Force Statistics				
	Oct-17	Sep-17	Oct-16	OTY
CLF	160,465,000	161,049,000	159,783,000	682,000
Employed	154,223,000	154,494,000	152,335,000	1,888,000
Unemployed	6,242,000	6,556,000	7,447,000	-1,205,000
Rate	3.9%	4.1%	4.7%	-0.8%

Continued Claims for the Week of the 12th				
	Oct-17	Sep-17	Oct-16	OTY
WDA	506	454	577	-71
Texas	104,802	115,057	124,901	-20,099

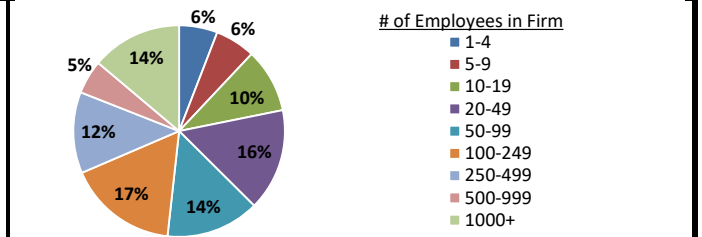
Historical Unemployment Rates



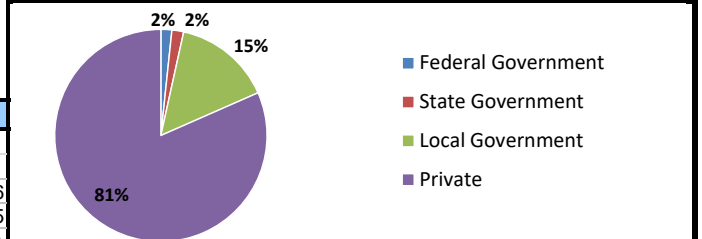
Projected Fastest Growing Industries in WDA (% growth 2014-2024)



Employment by Size Class (2nd Quarter 2017)



Employment by Ownership (2nd Quarter 2017)



Average Weekly Wage (2nd Quarter 2017)

	Q2 2017	Q1 2017	Q2 2016	Change	
				Quarter	Year
WDA	\$821	\$796	\$766	\$25	\$56
Texas	\$1,026	\$1,124	\$1,000	-\$99	\$25
US	N/A	\$1,111	\$988	N/A	N/A

Employment by Industry (2nd Quarter 2017, Percent Change)

Industry	Employment	% of total	% Change	
			Quarter	Year
Natural resources and mining	1,664	2.5%	9.0%	23.5%
Construction	3,771	5.6%	4.8%	0.7%
Manufacturing	9,375	13.9%	-1.7%	-2.0%
Trade, transportation and utilities	12,669	18.8%	-0.4%	-2.1%
Information	525	0.8%	-2.6%	-7.6%
Financial activities	3,698	5.5%	0.4%	-0.8%
Professional and business services	3,999	5.9%	-1.5%	10.0%
Education and health services	19,699	29.2%	0.5%	3.3%
Leisure and hospitality	7,665	11.3%	6.3%	2.2%
Other services	1,483	2.2%	-0.6%	-4.4%
Public administration	3,017	4.5%	1.5%	1.1%
Total	67,565	100.0%	0.9%	1.4%

Employment by Industry (2nd Quarter 2017)

