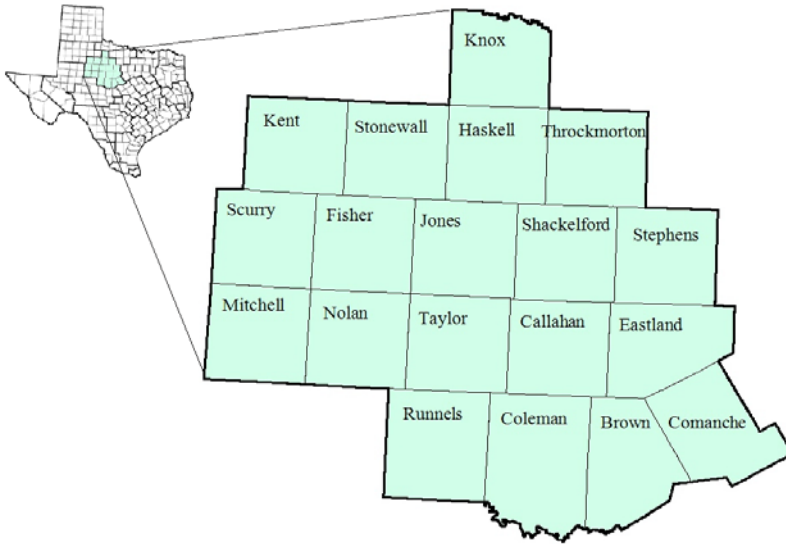


West Central Texas Workforce Development Area

March 2018



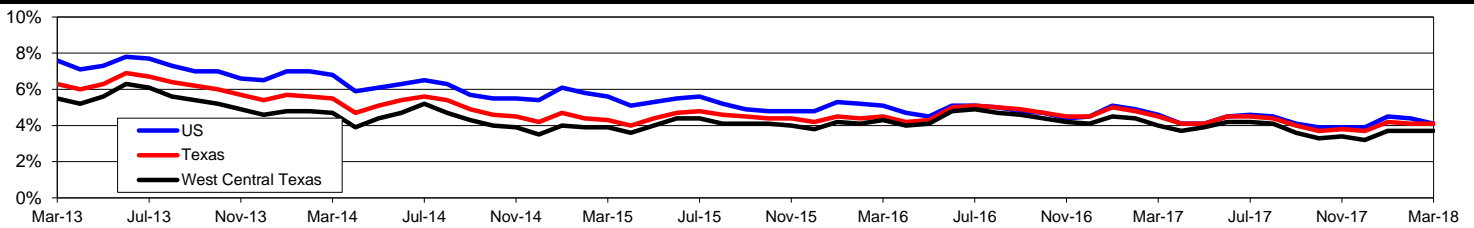
WDA Labor Force Statistics				
	Mar-18	Feb-18	Mar-17	OTY
CLF	145,176	143,899	143,484	1,692
Employed	139,804	138,600	137,675	2,129
Unemployed	5,372	5,299	5,809	-437
Rate	3.7%	3.7%	4.0%	-0.3%

Texas Labor Force Statistics				
	Mar-18	Feb-18	Mar-17	OTY
CLF	13,834,783	13,810,899	13,517,746	317,037
Employed	13,265,346	13,240,944	12,904,419	360,927
Unemployed	569,437	569,955	613,327	-43,890
Rate	4.1%	4.1%	4.5%	-0.4%

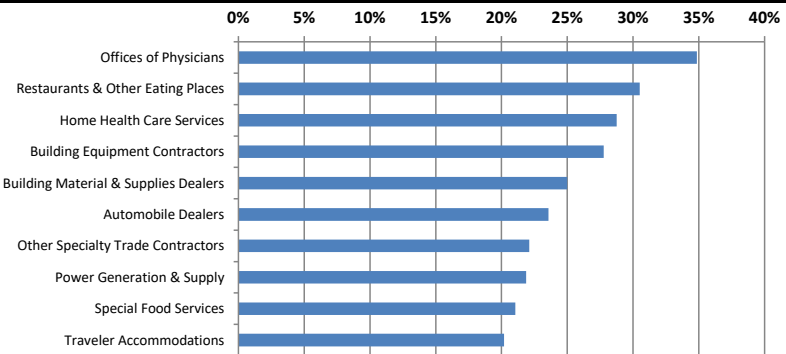
US Labor Force Statistics				
	Mar-18	Feb-18	Mar-17	OTY
CLF	161,548,000	161,494,000	159,912,000	1,636,000
Employed	154,877,000	154,403,000	152,628,000	2,249,000
Unemployed	6,671,000	7,091,000	7,284,000	-613,000
Rate	4.1%	4.4%	4.6%	-0.5%

Continued Claims for the Week of the 12th				
	Mar-18	Feb-18	Mar-17	OTY
WDA	675	652	808	-133
Texas	101,803	104,413	122,322	-20,519

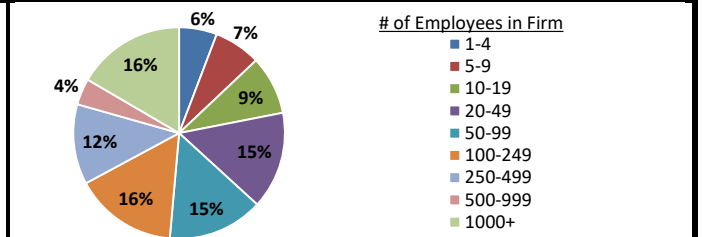
Historical Unemployment Rates



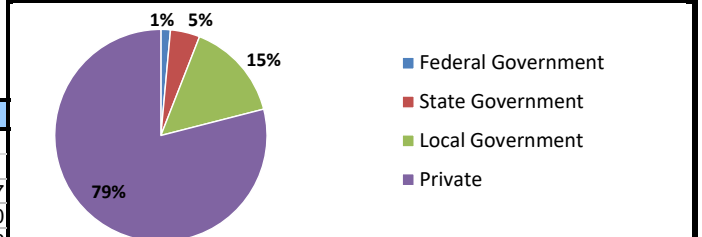
Projected Fastest Growing Industries in WDA (% growth 2014-2024)



Employment by Size Class (3rd Quarter 2017)



Employment by Ownership (3rd Quarter 2017)



Average Weekly Wage (3rd Quarter 2017)

	Q3 2017	Q2 2017	Q3 2016	Change	
				Quarter	Year
WDA	\$768	\$759	\$751	\$9	\$17
Texas	\$1,032	\$1,027	\$1,042	\$5	-\$10
US	\$1,021	\$1,020	\$1,027	\$1	-\$6

Employment by Industry (3rd Quarter 2017, Percent Change)

Industry	Employment	% of total	% Change	
			Quarter	Year
Natural resources and mining	7,000	5.8%	1.1%	4.4%
Construction	6,241	5.1%	-0.5%	-3.9%
Manufacturing	9,093	7.5%	1.4%	1.1%
Trade, transportation and utilities	24,792	20.4%	0.4%	1.1%
Information	1,338	1.1%	-2.0%	-7.2%
Financial activities	5,939	4.9%	1.8%	5.4%
Professional and business services	7,706	6.4%	2.2%	-0.3%
Education and health services	34,615	28.5%	-3.0%	0.3%
Leisure and hospitality	13,191	10.9%	0.4%	3.2%
Other services	3,458	2.9%	-2.1%	2.4%
Public administration	7,924	6.5%	-0.4%	-2.2%
Total	121,297	100.0%	-0.5%	0.8%

Employment by Industry (3rd Quarter 2017)

