

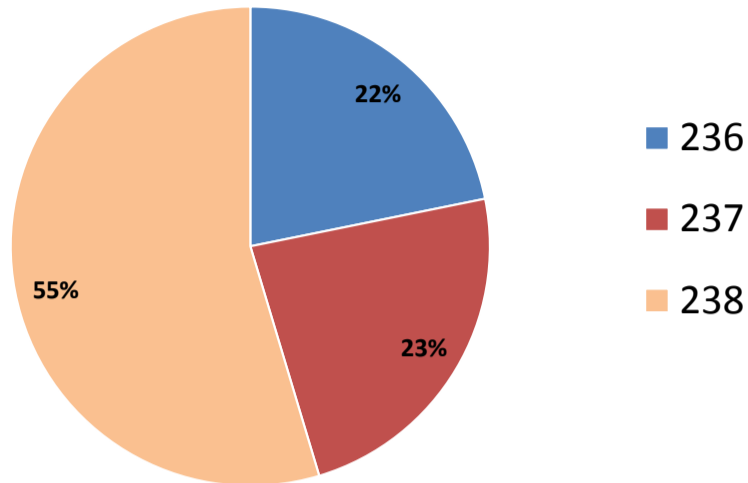
# TEXAS INDUSTRY PROFILE

## NAICS Sector 23 - Construction

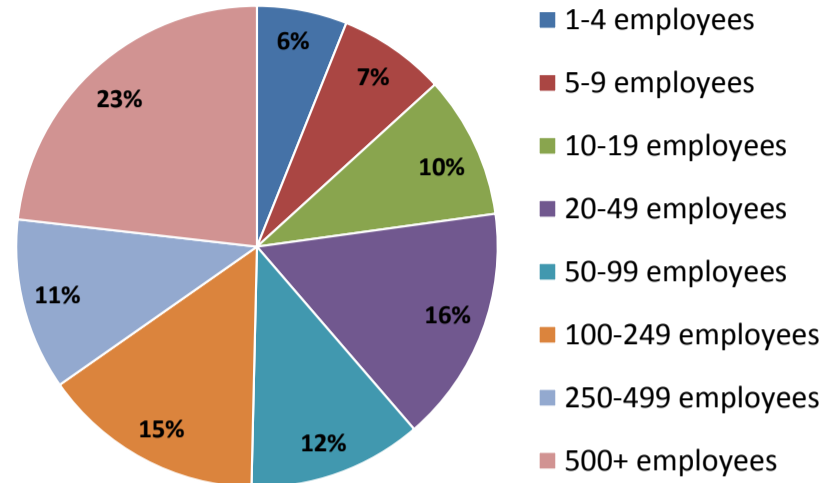
Fourth Quarter 2016

This sector comprises establishments primarily engaged in the construction of buildings or engineering projects (e.g., highways and utility systems). Establishments primarily engaged in the preparation of sites for new construction and establishments primarily engaged in subdividing land for sale as building sites also are included in this sector. Construction work done may include new work, additions, alterations, or maintenance and repairs. **Components: Construction of Buildings-NAICS 236, Heavy and Civil Engineering Construction-NAICS 237, and Specialty Trade Contractors-NAICS 238.**

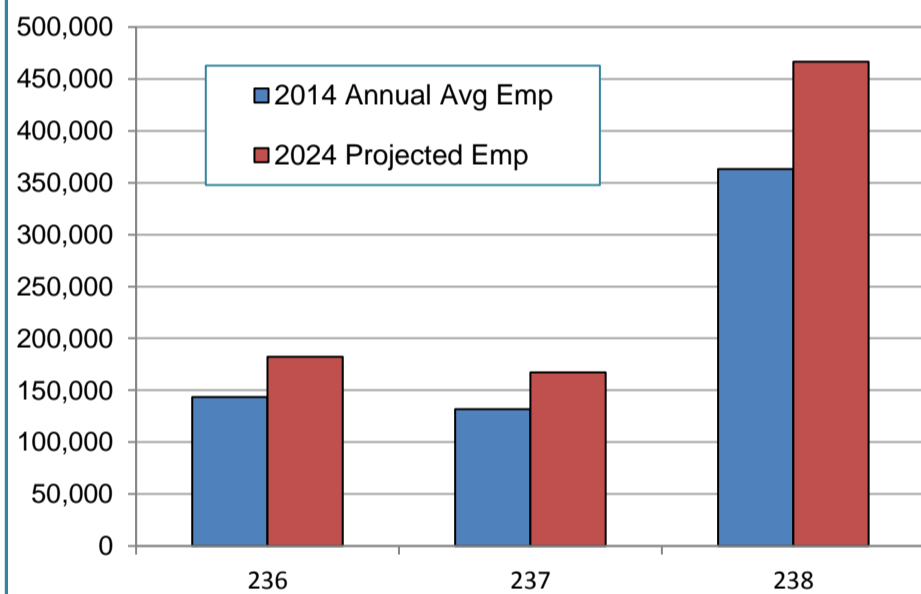
Industry Subsectors by Employment (733,102)



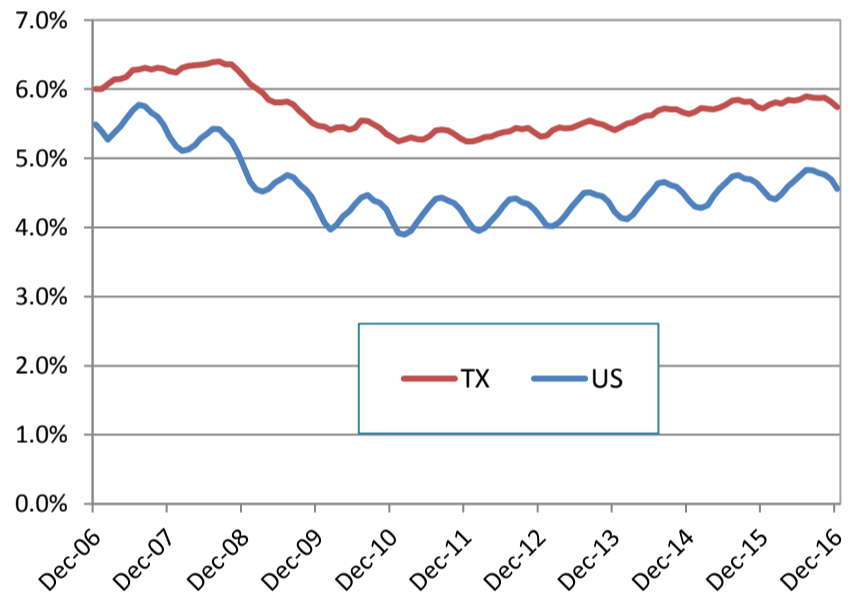
Size Classes by Employment



Projected Industry Employment



Industry Employment as a Percentage of Total Nonfarm Employment (Private Ownership Only)



Average Weekly Wage



Industry Employment as a Percentage of County Employment

