

TEXAS

Labor Market Comparison Report

Texas Workforce Commission • Labor Market Information Department • Austin, Texas

Published March 2003 with January 2003 Data

The Labor Market Comparison Report is a monthly publication highlighting Texas economic indicators and comparing them against those of other large states, Texas' border states, and the United States. Economic indicators are typically used to analyze the health of the economy in a particular area and to predict future economic activity. The indicators presented here are by no means the only ones available for the chosen areas but are instead those indicators that are most easily compared over the many regions.

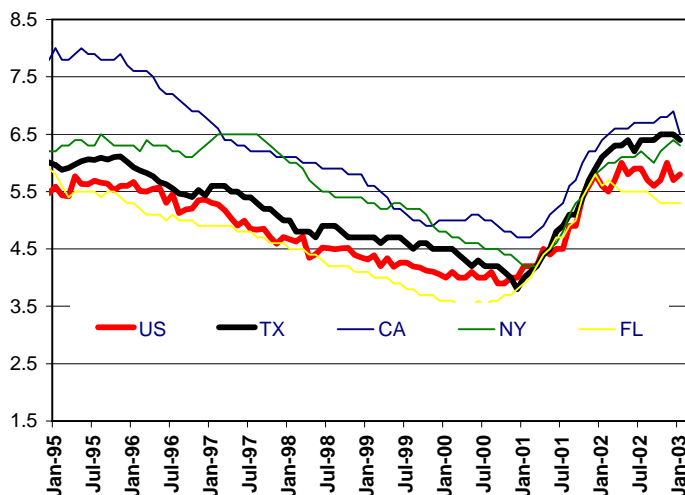
Local Area Unemployment Statistics for January 2003 Seasonally Adjusted Series

| | Texas | | | |
|--------|------------|------------|------------|------|
| | C.L.F. | Employed | Unemployed | Rate |
| Jan-03 | 10,892,735 | 10,193,948 | 698,787 | 6.4 |
| Dec-02 | 10,807,276 | 10,107,597 | 699,679 | 6.5 |
| Jan-02 | 10,676,299 | 10,029,821 | 646,478 | 6.1 |
| | California | | | |
| | C.L.F. | Employed | Unemployed | Rate |
| Jan-03 | 17,558,675 | 16,415,481 | 1,143,194 | 6.5 |
| Dec-02 | 17,497,773 | 16,291,485 | 1,206,288 | 6.9 |
| Jan-02 | 17,313,724 | 16,198,559 | 1,115,165 | 6.4 |
| | Florida | | | |
| | C.L.F. | Employed | Unemployed | Rate |
| Jan-03 | 8,124,775 | 7,695,299 | 429,476 | 5.3 |
| Dec-02 | 8,076,624 | 7,645,620 | 431,004 | 5.3 |
| Jan-02 | 8,072,187 | 7,617,861 | 454,326 | 5.6 |
| | New Mexico | | | |
| | C.L.F. | Employed | Unemployed | Rate |
| Jan-03 | 890,550 | 838,847 | 51,703 | 5.8 |
| Dec-02 | 884,971 | 837,201 | 47,770 | 5.4 |
| Jan-02 | 867,965 | 822,387 | 45,578 | 5.3 |
| | Arkansas | | | |
| | C.L.F. | Employed | Unemployed | Rate |
| Jan-03 | 1,299,231 | 1,235,877 | 63,354 | 4.9 |
| Dec-02 | 1,298,413 | 1,228,353 | 70,060 | 5.4 |
| Jan-02 | 1,262,923 | 1,195,037 | 67,886 | 5.4 |

| | US | | | |
|--------|-------------|-------------|------------|------|
| | C.L.F. | Employed | Unemployed | Rate |
| Jan-03 | 145,857,000 | 137,408,000 | 8,450,000 | 5.8 |
| Dec-02 | 145,838,000 | 137,536,000 | 8,302,000 | 5.7 |
| Jan-02 | 141,390,000 | 133,468,000 | 7,922,000 | 5.6 |
| | New York | | | |
| | C.L.F. | Employed | Unemployed | Rate |
| Jan-03 | 9,349,159 | 8,762,732 | 586,427 | 6.3 |
| Dec-02 | 9,455,287 | 8,849,084 | 606,203 | 6.4 |
| Jan-02 | 9,236,539 | 8,695,770 | 540,769 | 5.9 |
| | Louisiana | | | |
| | C.L.F. | Employed | Unemployed | Rate |
| Jan-03 | 2,043,592 | 1,936,012 | 107,580 | 5.3 |
| Dec-02 | 2,001,841 | 1,876,096 | 125,745 | 6.3 |
| Jan-02 | 2,024,191 | 1,900,749 | 123,442 | 6.1 |
| | Oklahoma | | | |
| | C.L.F. | Employed | Unemployed | Rate |
| Jan-03 | 1,703,956 | 1,619,423 | 84,533 | 5.0 |
| Dec-02 | 1,698,651 | 1,619,045 | 79,606 | 4.7 |
| Jan-02 | 1,689,939 | 1,615,340 | 74,599 | 4.4 |

Estimates for the current month are preliminary. All estimates are subject to revision. Civilian Labor Force (C.L.F.) includes wage and salary workers, self-employed, unpaid family, domestics in private households, agricultural workers, workers involved in labor disputes and the unemployed, all by place of residence.

CA, NY, TX, FL and US Seasonally Adjusted Unemployment Rates



Large States Unemployment Rates

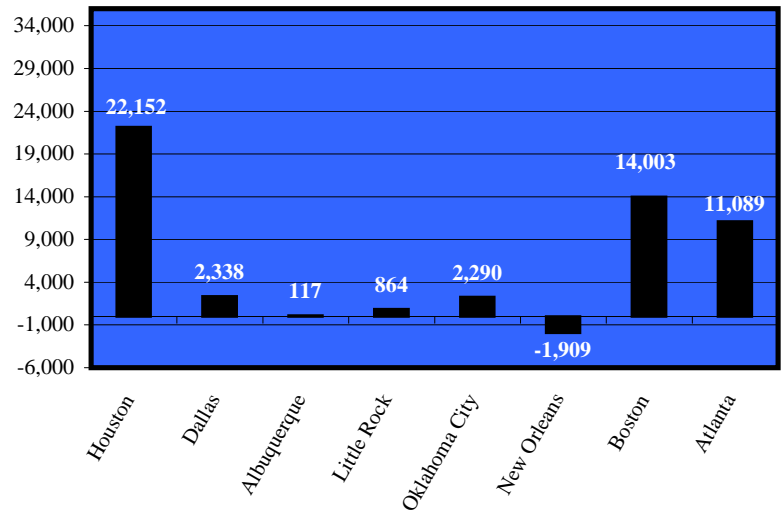
| | Jan-03 | Dec-02 | Jan-02 |
|------------|--------|--------|--------|
| US | 5.8 | 5.7 | 5.6 |
| Texas | 6.4 | 6.5 | 6.1 |
| California | 6.5 | 6.9 | 6.4 |
| New York | 6.3 | 6.4 | 5.9 |
| Florida | 5.3 | 5.3 | 5.6 |

Unadjusted Series for Metropolitan Statistical Areas

| Houston, TX | | | | |
|-------------------------------------|-----------|-----------|------------|------|
| | C.L.F. | Employed | Unemployed | Rate |
| Jan-03 | 2,276,950 | 2,129,291 | 147,659 | 6.5 |
| Dec-02 | 2,274,830 | 2,148,240 | 126,590 | 5.6 |
| Jan-02 | 2,236,674 | 2,111,167 | 125,507 | 5.6 |
| Boston, MA-NH | | | | |
| | C.L.F. | Employed | Unemployed | Rate |
| Jan-03 | 1,890,356 | 1,795,509 | 94,847 | 5.0 |
| Dec-02 | 1,852,180 | 1,771,380 | 80,800 | 4.4 |
| Jan-02 | 1,849,945 | 1,769,101 | 80,844 | 4.4 |
| Albuquerque, NM | | | | |
| | C.L.F. | Employed | Unemployed | Rate |
| Jan-03 | 390,166 | 370,457 | 19,709 | 5.1 |
| Dec-02 | 385,789 | 367,888 | 17,901 | 4.6 |
| Jan-02 | 378,865 | 359,273 | 19,592 | 5.2 |
| Oklahoma City, OK | | | | |
| | C.L.F. | Employed | Unemployed | Rate |
| Jan-03 | 578,569 | 551,820 | 26,749 | 4.6 |
| Dec-02 | 558,119 | 535,419 | 22,700 | 4.1 |
| Jan-02 | 552,479 | 528,020 | 24,459 | 4.4 |
| Dallas, TX | | | | |
| | C.L.F. | Employed | Unemployed | Rate |
| Jan-03 | 2,040,626 | 1,891,514 | 149,112 | 7.3 |
| Dec-02 | 2,035,801 | 1,906,112 | 129,689 | 6.4 |
| Jan-02 | 2,033,450 | 1,886,676 | 146,774 | 7.2 |
| Atlanta, GA | | | | |
| | C.L.F. | Employed | Unemployed | Rate |
| Jan-03 | 2,379,509 | 2,267,468 | 112,041 | 4.7 |
| Dec-02 | 2,364,352 | 2,252,859 | 111,493 | 4.7 |
| Jan-02 | 2,294,577 | 2,193,625 | 100,952 | 4.4 |
| Little Rock - North Little Rock, AR | | | | |
| | C.L.F. | Employed | Unemployed | Rate |
| Jan-03 | 311,289 | 296,678 | 14,611 | 4.7 |
| Dec-02 | 307,444 | 295,232 | 12,212 | 4.0 |
| Jan-02 | 303,636 | 289,889 | 13,747 | 4.5 |
| New Orleans, LA | | | | |
| | C.L.F. | Employed | Unemployed | Rate |
| Jan-03 | 593,746 | 561,861 | 31,885 | 5.4 |
| Dec-02 | 589,818 | 558,282 | 31,536 | 5.3 |
| Jan-02 | 599,342 | 565,548 | 33,794 | 5.6 |

Estimates for the current month are preliminary. All estimates are subject to revision. Estimates reflect unadjusted (not seasonally adjusted) data. Civilian Labor Force (C.L.F.) includes wage and salary workers, self-employed, unpaid family, domestics in private households, agricultural workers, workers involved in labor disputes and the unemployed, all by place of residence.

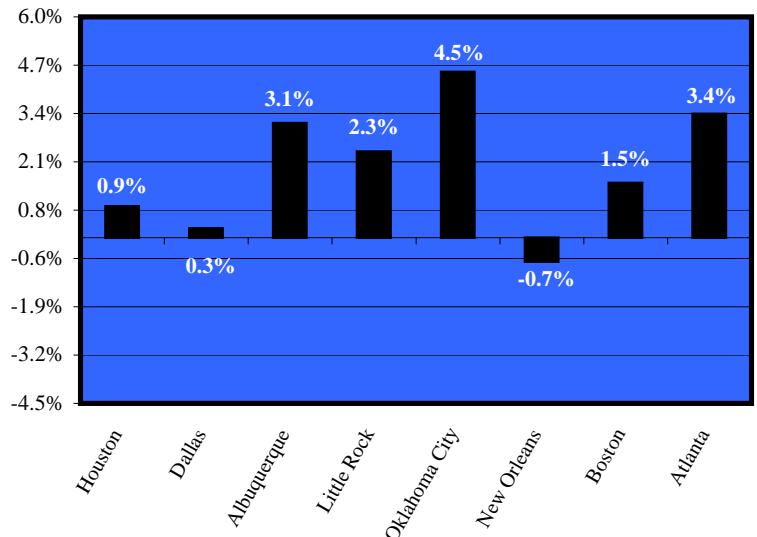
Over-the-Year Change in Unemployment by MSA
Jan-03



Metropolitan Statistical Area Population

| | (Census) 2000 | (Census) 1990 | Numeric Change | Growth |
|-------------------|------------------|------------------|-------------------|--------|
| Houston, TX | 4,669,571 | 3,731,131 | 938,440 | 20.1% |
| Dallas, TX | 5,221,801 | 4,037,282 | 1,184,519 | 22.7% |
| Albuquerque, NM | 712,738 | 589,131 | 123,607 | 17.3% |
| Little Rock, AR | 513,026 | 556,295 | -43,269 | -8.4% |
| Oklahoma City, OK | 1,083,346 | 958,839 | 124,507 | 11.5% |
| New Orleans, LA | 1,337,726 | 1,285,270 | 52,456 | 3.9% |
| Boston, MA-NH | 5,819,100 | 5,455,403 | 363,697 | 6.3% |
| Atlanta, GA | 4,112,198 | 2,959,950 | 1,152,248 | 28.0% |

Over-the-Year Employment Growth by MSA
Jan-03



Local Area Unemployment Statistics for All States
(January 2003 preliminary Data)

Seasonally Adjusted Series
(Numbers in thousands)

| State | C.L.F. | Emp. | Unemp. | Rate |
|---------------|----------|----------|---------|------|
| Alabama | 2,157.5 | 2,037.4 | 120.1 | 5.6 |
| Alaska | 339.5 | 316.2 | 23.3 | 6.9 |
| Arizona | 2,662.6 | 2,514.7 | 147.9 | 5.6 |
| Arkansas | 1,299.2 | 1,235.8 | 63.4 | 4.9 |
| California | 17,558.7 | 16,415.5 | 1,143.2 | 6.5 |
| Colorado | 1,776.8 | 1,690.9 | 85.9 | 4.8 |
| Connecticut | 421.2 | 406.9 | 14.3 | 3.4 |
| Delaware | 300.5 | 282.3 | 18.2 | 6.1 |
| Florida | 4,351.8 | 4,150.4 | 201.4 | 4.6 |
| Georgia | 692.2 | 653.0 | 39.2 | 5.7 |
| Hawaii | 6,401.9 | 5,997.4 | 404.5 | 6.3 |
| Idaho | 3,191.1 | 3,039.5 | 151.6 | 4.8 |
| Illinois | 1,649.6 | 1,586.3 | 63.3 | 3.8 |
| Indiana | 1,470.6 | 1,401.9 | 68.7 | 4.7 |
| Iowa | 1,984.9 | 1,879.6 | 105.3 | 5.3 |
| Kansas | 2,043.6 | 1,936.0 | 107.6 | 5.3 |
| Kentucky | 698.3 | 666.1 | 32.2 | 4.6 |
| Louisiana | 2,927.8 | 2,809.5 | 118.3 | 4.0 |
| Maine | 3,453.3 | 3,274.0 | 179.3 | 5.2 |
| Maryland | 2,909.2 | 2,783.5 | 125.7 | 4.3 |
| Massachusetts | 1,321.6 | 1,236.4 | 85.2 | 6.4 |
| Michigan | 2,960.8 | 2,810.5 | 150.3 | 5.1 |
| Minnesota | 470.2 | 450.2 | 20.0 | 4.2 |
| Mississippi | 976.3 | 943.7 | 32.6 | 3.3 |
| Missouri | 1,113.5 | 1,058.1 | 55.4 | 5.0 |

| State | C.L.F. | Emp. | Unemp. | Rate |
|----------------|----------|----------|--------|------|
| Montana | 716.8 | 685.1 | 31.7 | 4.4 |
| Nebraska | 4,404.8 | 4,161.1 | 243.7 | 5.5 |
| Nevada | 890.6 | 838.9 | 51.7 | 5.8 |
| New Hampshire | 9,349.2 | 8,762.8 | 586.4 | 6.3 |
| New Jersey | 4,166.9 | 3,916.2 | 250.7 | 6.0 |
| New Mexico | 350.0 | 337.6 | 12.4 | 3.5 |
| New York | 5,873.8 | 5,549.6 | 324.2 | 5.5 |
| North Carolina | 1,848.1 | 1,708.7 | 139.4 | 7.5 |
| North Dakota | 6,269.0 | 5,885.6 | 383.4 | 6.1 |
| Ohio | 573.4 | 543.9 | 29.5 | 5.1 |
| Oklahoma | 2,031.4 | 1,903.5 | 127.9 | 6.3 |
| Oregon | 419.8 | 406.8 | 13.0 | 3.1 |
| Pennsylvania | 2,887.9 | 2,754.9 | 133.0 | 4.6 |
| Rhode Island | 10,892.7 | 10,193.9 | 698.8 | 6.4 |
| South Carolina | 351.6 | 337.3 | 14.3 | 4.1 |
| South Dakota | 3,784.7 | 3,634.7 | 150.0 | 4.0 |
| Tennessee | 3,128.4 | 2,922.3 | 206.1 | 6.6 |
| Texas | 805.9 | 762.1 | 43.8 | 5.4 |
| Utah | 3,098.9 | 2,932.1 | 166.8 | 5.4 |
| Vermont | 274.7 | 263.8 | 10.9 | 4.0 |
| Virginia | 3,776.8 | 3,630.5 | 146.3 | 3.9 |
| Washington | 3,069.6 | 2,860.6 | 209.0 | 6.8 |
| West Virginia | 804.7 | 759.4 | 45.3 | 5.6 |
| Wisconsin | 3,074.8 | 2,908.7 | 166.1 | 5.4 |
| Wyoming | 273.3 | 261.3 | 12.0 | 4.4 |

Unadjusted Series
(Numbers in thousands)

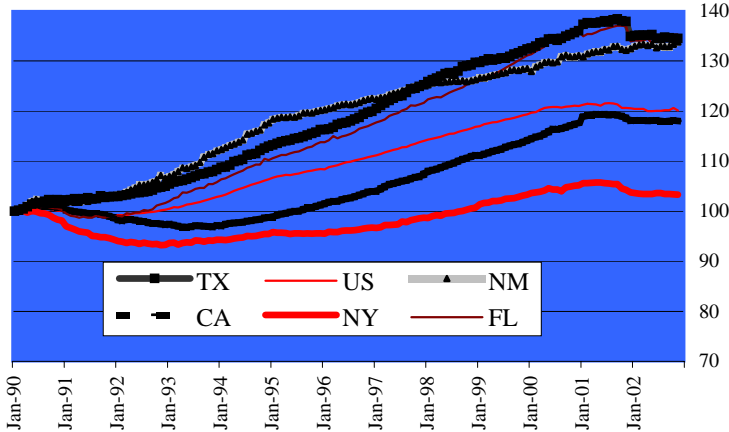
| State | C.L.F. | Emp. | Unemp. | Rate |
|---------------|----------|----------|---------|------|
| Alabama | 2,133.6 | 2,013.4 | 120.2 | 5.6 |
| Alaska | 334.3 | 305.4 | 28.9 | 8.6 |
| Arizona | 2,642.2 | 2,497.1 | 145.1 | 5.5 |
| Arkansas | 1,275.8 | 1,199.8 | 76.0 | 6.0 |
| California | 17,458.9 | 16,229.3 | 1,229.6 | 7.0 |
| Colorado | 1,757.8 | 1,663.8 | 94.0 | 5.3 |
| Connecticut | 418.1 | 400.8 | 17.3 | 4.1 |
| Delaware | 297.2 | 278.2 | 19.0 | 6.4 |
| Florida | 4,306.7 | 4,113.0 | 193.7 | 4.5 |
| Georgia | 681.6 | 633.8 | 47.8 | 7.0 |
| Hawaii | 6,332.0 | 5,883.5 | 448.5 | 7.1 |
| Idaho | 3,145.9 | 2,977.4 | 168.5 | 5.4 |
| Illinois | 1,643.9 | 1,562.6 | 81.3 | 4.9 |
| Indiana | 1,459.8 | 1,383.7 | 76.1 | 5.2 |
| Iowa | 1,963.0 | 1,840.0 | 123.0 | 6.3 |
| Kansas | 2,017.2 | 1,889.8 | 127.4 | 6.3 |
| Kentucky | 684.3 | 646.2 | 38.1 | 5.6 |
| Louisiana | 2,896.3 | 2,766.3 | 130.0 | 4.5 |
| Maine | 3,427.2 | 3,228.2 | 199.0 | 5.8 |
| Maryland | 2,870.9 | 2,723.6 | 147.3 | 5.1 |
| Massachusetts | 1,314.1 | 1,221.6 | 92.5 | 7.0 |
| Michigan | 2,937.3 | 2,768.7 | 168.6 | 5.7 |
| Minnesota | 463.7 | 439.1 | 24.6 | 5.3 |
| Mississippi | 966.8 | 929.7 | 37.1 | 3.8 |
| Missouri | 1,106.9 | 1,043.9 | 63.0 | 5.7 |

| State | C.L.F. | Emp. | Unemp. | Rate |
|----------------|----------|----------|--------|------|
| Montana | 711.8 | 677.0 | 34.8 | 4.9 |
| Nebraska | 4,365.2 | 4,107.4 | 257.8 | 5.9 |
| Nevada | 882.7 | 829.2 | 53.5 | 6.1 |
| New Hampshire | 9,295.6 | 8,654.7 | 640.9 | 6.9 |
| New Jersey | 4,121.9 | 3,849.6 | 272.3 | 6.6 |
| New Mexico | 341.4 | 325.1 | 16.3 | 4.8 |
| New York | 5,785.3 | 5,422.0 | 363.3 | 6.3 |
| North Carolina | 1,827.9 | 1,670.3 | 157.6 | 8.6 |
| North Dakota | 6,209.3 | 5,789.6 | 419.7 | 6.8 |
| Ohio | 568.1 | 533.6 | 34.5 | 6.1 |
| Oklahoma | 1,988.2 | 1,854.3 | 133.9 | 6.7 |
| Oregon | 409.8 | 393.7 | 16.1 | 3.9 |
| Pennsylvania | 2,847.5 | 2,696.3 | 151.2 | 5.3 |
| Rhode Island | 10,814.1 | 10,081.8 | 732.3 | 6.8 |
| South Carolina | 350.2 | 331.9 | 18.3 | 5.2 |
| South Dakota | 3,741.8 | 3,583.9 | 157.9 | 4.2 |
| Tennessee | 3,116.2 | 2,886.9 | 229.3 | 7.4 |
| Texas | 794.6 | 743.7 | 50.9 | 6.4 |
| Utah | 3,065.2 | 2,873.5 | 191.7 | 6.3 |
| Vermont | 269.2 | 255.6 | 13.6 | 5.1 |
| Virginia | 3,749.6 | 3,615.8 | 133.8 | 3.6 |
| Washington | 3,067.3 | 2,858.3 | 209.0 | 6.8 |
| West Virginia | 805.5 | 761.3 | 44.2 | 5.5 |
| Wisconsin | 3,050.6 | 2,900.0 | 150.6 | 4.9 |
| Wyoming | 270.3 | 258.3 | 12.0 | 4.4 |

Seasonally Adjusted Nonfarm Wage and Salary Employment for December 2002 *(latest available data for comparison)*

U.S., Texas, and Other Large States

Nonfarm Wage and Salary Employment Index
January 1990 = 100

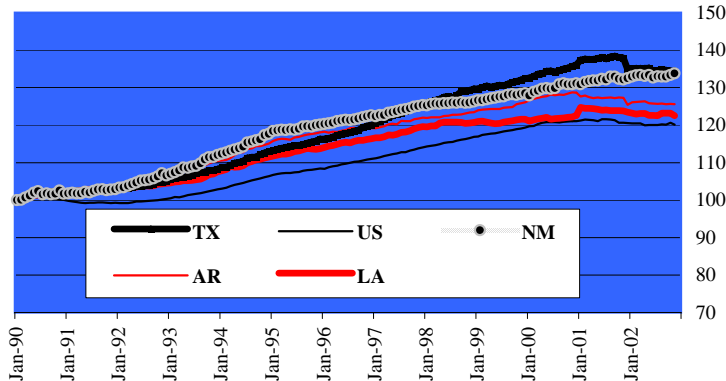


| Nonfarm Wage and Salary Employment | | | |
|------------------------------------|-------------|-------------|-------------|
| | Dec-02 | Nov-02 | Dec-01 |
| Texas | 9,410,600 | 9,410,600 | 9,437,000 |
| US | 130,670,000 | 130,867,000 | 131,321,000 |
| California | 14,630,400 | 14,645,800 | 14,656,200 |
| New York | 8,524,200 | 8,531,000 | 8,568,500 |
| Florida | 7,230,600 | 7,239,400 | 7,166,300 |

| Nonfarm Wage and Salary Growth | | |
|--------------------------------|-------|-------|
| | OTM | OTY |
| Texas | 0.0% | -0.3% |
| US | -0.2% | -0.5% |
| California | -0.1% | -0.2% |
| New York | -0.1% | -0.5% |
| Florida | -0.1% | 0.9% |

The U.S., Texas, and it's Border States

Nonfarm Wage and Salary Employment Index
January 1990 = 100

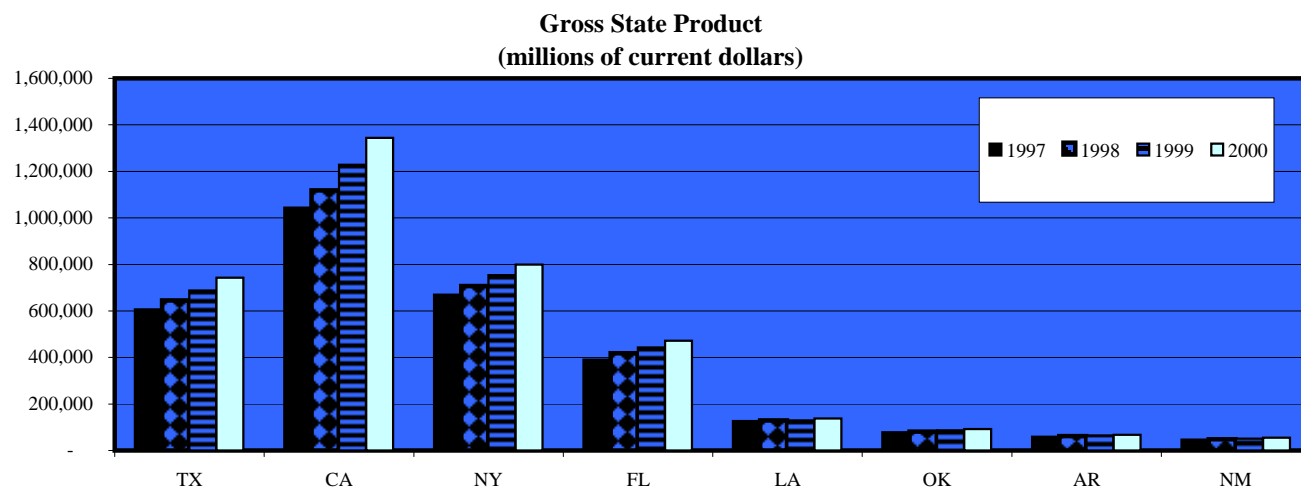


| Nonfarm Wage and Salary Employment | | | |
|------------------------------------|-------------|-------------|-------------|
| | Dec-02 | Nov-02 | Dec-01 |
| Texas | 9,410,600 | 9,410,600 | 9,452,500 |
| US | 130,670,000 | 130,867,000 | 131,195,000 |
| New Mexico | 764,200 | 765,700 | 760,900 |
| Oklahoma | 1,521,300 | 1,521,900 | 1,509,900 |
| Arkansas | 1,149,400 | 1,149,400 | 1,154,100 |
| Louisiana | 1,931,100 | 1,921,900 | 1,933,200 |

| Nonfarm Wage and Salary Growth | | |
|--------------------------------|-------|-------|
| | OTM | OTY |
| Texas | 0.0% | -0.3% |
| US | -0.2% | -0.5% |
| New Mexico | -0.2% | 0.4% |
| Oklahoma | 0.0% | 0.8% |
| Arkansas | 0.0% | -0.4% |
| Louisiana | 0.5% | -0.1% |

Gross State Product

According to the Bureau of Economic Analysis, Gross State Product is defined as the value added in production by the labor and property located in a state. GSP for a state is derived as the sum of the GSP originating in all industries in the state.



Poverty

How the Census Bureau Measures

Following the Office of Management and Budget's (OMB's) Statistical Policy Directive 14, the U.S. Census Bureau uses a set of money income thresholds that vary by family size and composition to detect who is poor. If a family's total income is less than that family's threshold, then that family, and every individual in it, is considered poor. The poverty thresholds do not vary geographically, but they are updated annually for inflation using the Consumer Price Index (CPI-U). The official poverty definition counts money income before taxes and does not include capital gains and noncash benefits (such as public housing, medicaid, and food stamps). Poverty is not defined for people in military barracks, institutional group quarters, or for unrelated individuals under age 15 (such as foster children). They are excluded from the poverty universe--that is, they are considered neither as "poor" nor as "nonpoor."

Source: Dalaker, Joseph, U.S. Census Bureau, Current Population Reports, Series P60-207, Poverty in the United States: 1998, U.S. Government Printing Office, Washington, DC, 1999.

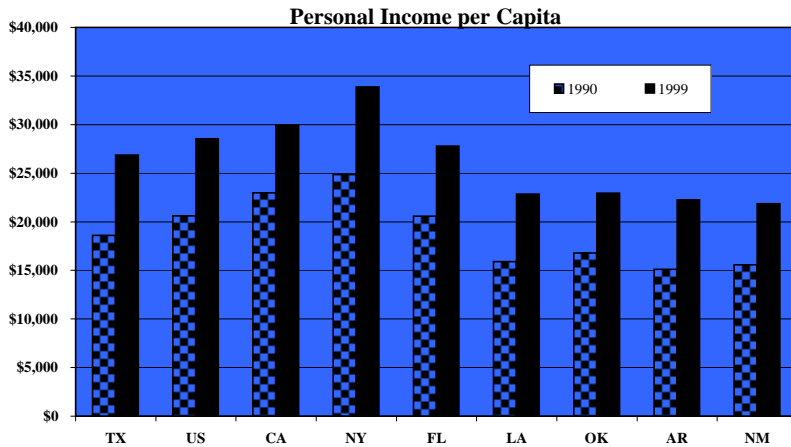
**Percentage Point Change in Poverty Rate
1990-1998**



| Percentage of People Living in Poverty | | | |
|--|-------|-------|-----------------------------|
| | 1990 | 1998 | Percentage Point Difference |
| Texas | 15.9% | 15.0% | -0.9 |
| US | 13.5% | 12.7% | -0.8 |
| California | 13.9% | 15.4% | 1.5 |
| New York | 14.3% | 16.7% | 2.4 |
| Florida | 14.4% | 13.1% | -1.3 |
| Louisiana | 23.6% | 19.1% | -4.5 |
| Oklahoma | 15.6% | 14.1% | -1.5 |
| Arkansas | 19.6% | 14.8% | -4.8 |
| New Mexico | 20.9% | 20.4% | -0.5 |

Income

As defined by the U.S. Census Bureau, per capita income is the average income computed for every man, woman, and child in a particular group. The Census Bureau derived per capita income by dividing the total income of a particular group by the total population in that group (excluding patients or inmates in institutional quarters).

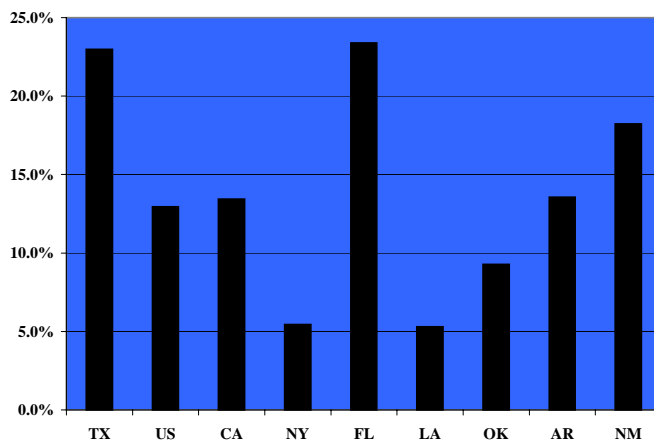


| Personal Income per Capita | | | |
|----------------------------|----------|----------|--------|
| | 1990 | 1999 | Growth |
| Texas | \$18,609 | \$26,858 | 44.3% |
| US | \$20,618 | \$28,542 | 38.4% |
| California | \$22,993 | \$29,910 | 30.1% |
| New York | \$24,869 | \$33,890 | 36.3% |
| Florida | \$20,587 | \$27,780 | 34.9% |
| Louisiana | \$15,900 | \$22,847 | 43.7% |
| Oklahoma | \$16,804 | \$22,953 | 36.6% |
| Arkansas | \$15,095 | \$22,244 | 47.4% |
| New Mexico | \$15,585 | \$21,853 | 40.2% |

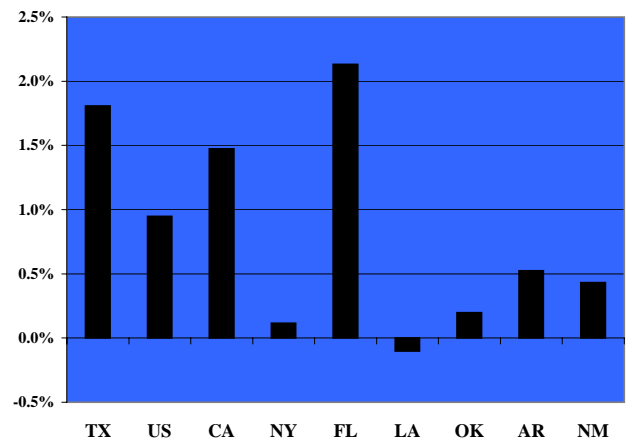
Population

| Selected State's Population Totals 1991-2001 | | | | | | | | | | | |
|--|-------------|-------------|-------------|-------------|-------------|-------------|-------------|-------------|-------------|-------------|-------------|
| | Jul-91 | Jul-92 | Jul-93 | Jul-94 | Jul-95 | Jul-96 | Jul-97 | Jul-98 | Jul-99 | Jul-00 | Jul-01 |
| Texas | 17,339,904 | 17,650,479 | 17,996,764 | 18,338,319 | 18,679,706 | 19,006,240 | 19,355,427 | 19,712,389 | 20,044,141 | 20,946,503 | 21,325,018 |
| US | 252,153,092 | 255,029,699 | 257,782,608 | 260,327,021 | 262,803,276 | 265,228,572 | 267,783,607 | 270,248,003 | 272,690,813 | 282,124,631 | 284,796,887 |
| California | 30,414,114 | 30,875,920 | 31,147,208 | 31,317,179 | 31,493,525 | 31,780,829 | 32,217,708 | 32,682,794 | 33,145,121 | 34,000,446 | 34,501,130 |
| New York | 18,029,532 | 18,082,032 | 18,140,894 | 18,156,652 | 18,150,928 | 18,143,805 | 18,143,184 | 18,159,175 | 18,196,601 | 18,989,332 | 19,011,378 |
| Florida | 13,289,497 | 13,504,775 | 13,713,593 | 13,961,798 | 14,185,403 | 14,426,911 | 14,683,350 | 14,908,230 | 15,111,244 | 16,054,328 | 16,396,515 |
| Louisiana | 4,240,950 | 4,270,849 | 4,284,749 | 4,306,500 | 4,327,978 | 4,338,763 | 4,351,390 | 4,362,758 | 4,372,035 | 4,469,970 | 4,465,430 |
| Oklahoma | 3,166,471 | 3,204,174 | 3,228,829 | 3,246,119 | 3,265,547 | 3,289,634 | 3,314,259 | 3,339,478 | 3,358,044 | 3,453,250 | 3,460,097 |
| Arkansas | 2,370,666 | 2,394,098 | 2,423,743 | 2,450,605 | 2,480,121 | 2,504,858 | 2,524,007 | 2,538,202 | 2,551,373 | 2,678,030 | 2,692,090 |
| New Mexico | 1,547,115 | 1,580,750 | 1,614,937 | 1,653,329 | 1,682,417 | 1,706,151 | 1,722,939 | 1,733,535 | 1,739,844 | 1,821,282 | 1,829,146 |

**Population Growth Rate
1991 - 2001**



**Population Growth Rate
2000-2001**



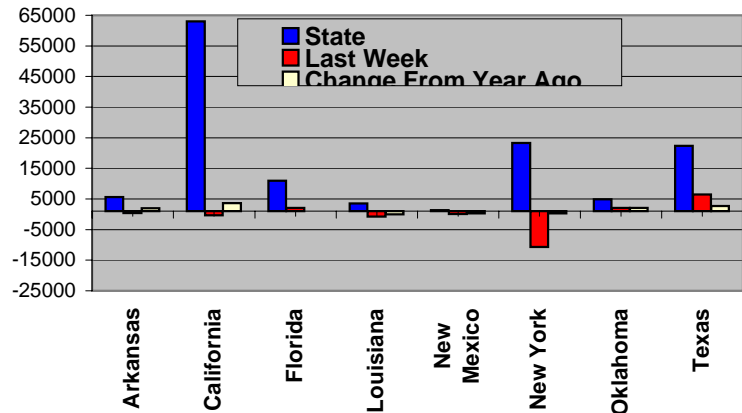
Initial Unemployment Claims

Initial unemployment claims represent the number of people filing first-time claims for state unemployment insurance and can often be a good measure of the condition of the labor market as a whole. Data included in this publication are for the most current month available.

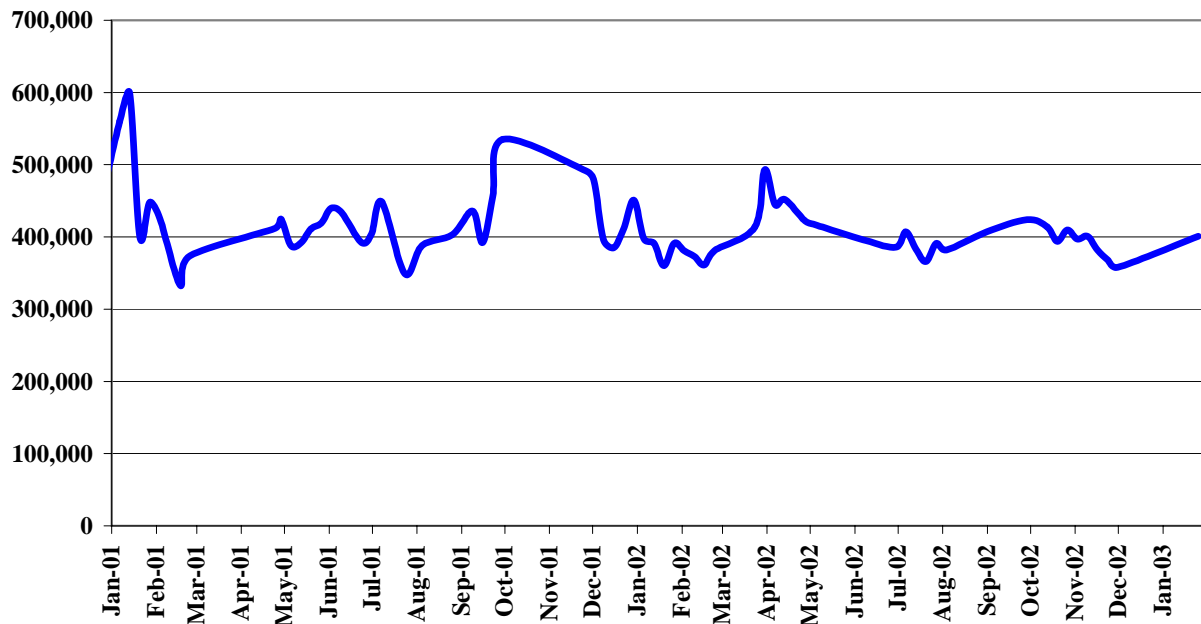
**Initial Claims Filed During Week of
March 8, 2003**

| NAME | STATE | CHANGE FROM | |
|------------|-------|-------------|--------|
| | | LAST WK | YR AGO |
| Arkansas | 5648 | 392 | 1945 |
| California | 62999 | -350 | 3603 |
| Florida | 10941 | 2027 | 982 |
| Louisiana | 3493 | -801 | -21 |
| New Mexico | 1308 | 50 | 270 |
| New York | 23271 | -10689 | 306 |
| Oklahoma | 4865 | 2026 | 2092 |
| Texas | 22310 | 6462 | 2728 |

**Initial Claims Filed During Week of
March 8, 2003**



US Weekly Initial Unemployment Claims



Regional LMI Contacts

Arkansas Employment Security Department

#2 Capitol Mall
P.O. Box 2981
Little Rock, AR 72203
Phone: 501-682-5227
Fax: 501-682-3223
www.state.ar.us/esd/labormarketinformation.htm

Office of Occupational Information

Research & Statistics Division
Louisiana Department of Labor
P.O. Bo 225-342-3141
Baton Rouge, LA 70804-9094
Phone:
Toll Free: 1-888-302-7662
Fax: 225-342-9192
www.ldol.state.la.us/LMIQM.asp

Economic Research & Analysis Bureau

New Mexico Department of Labor
P. O. Bc 841-8645
Albuquerque, NM 87103
Phone:
Fax: 505-841-9007
www3.state.mn.us/dol/dol_lmif.html

America's Career InfoNet

www.acinet.org

Labor Market Information

Economic Research & Analysis Division
Oklahoma Employment Security Commission
PO Box 52003
Oklahoma City, OK 73152-2003
Phone: 405-557-7261
Fax: 405-525-0139
www.oesc.state.ok.us/lmi/default.htm

Labor Market Information Department

Texas Workforce Commission
101 E. 15th Street, Suite 103 A2
Austin, TX 78778-0001
Phone: 512-491-4922
Fax: 512-491-4904
www.twc.state.tx.us/customers/rpm/rpmsub3.html

Labor Market Information Department, TWC

Texas Labor Market Comparison Report, Editor
David Mass, Economist
9001 IH-35 North, Suite 103-A
Austin, Texas 78753
Phone: (512) 491-4812
<david.mass@twc.state.tx.us>