

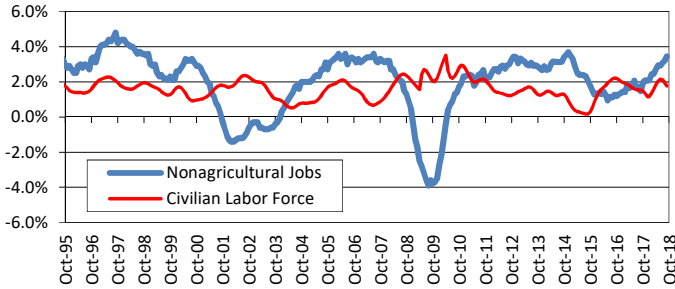
Texas Nonagricultural Employment Summary

Total Nonagricultural Wage and Salary employment increased by 32,300 jobs in October as employment rose for the 28th consecutive month. Goods Producing sector employment rose for the 15th consecutive month as 5,300 jobs were added, while Service Providing sector jobs increased by 27,000. The Total Nonfarm annual growth rate decreased slightly to 3.1 percent. Since October 2017, 384,800 jobs were added as Total Nonfarm employment reached a new high of 12,685,700. The Goods Producing sector grew 6.6 over the year in October.

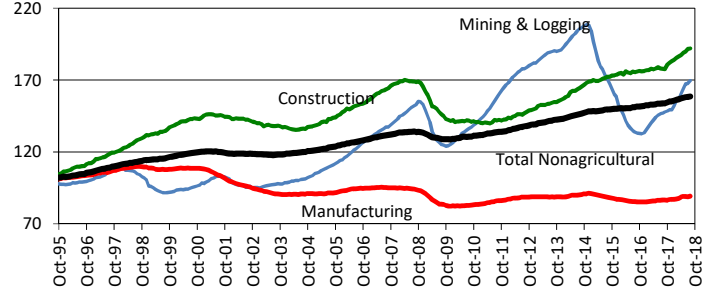
Texas Labor Force Summary

The Texas seasonally adjusted unemployment rate fell to 3.7 percent in October, and fell by 0.2 percentage points over the year. The U.S. rate remained at 3.7 percent in October and has fallen 0.4 percentage points over the year. The Texas Civilian Labor Force increased by 17,300 persons in October for the first increase since July 2018. The number of employed increased by 26,100 workers, while the number of unemployed dropped by 8,900 persons. The Texas CLF grew by 241,400 persons over the year.

Total Nonagricultural Jobs vs. Civilian Labor Force (Over-the-Year Percent Change)



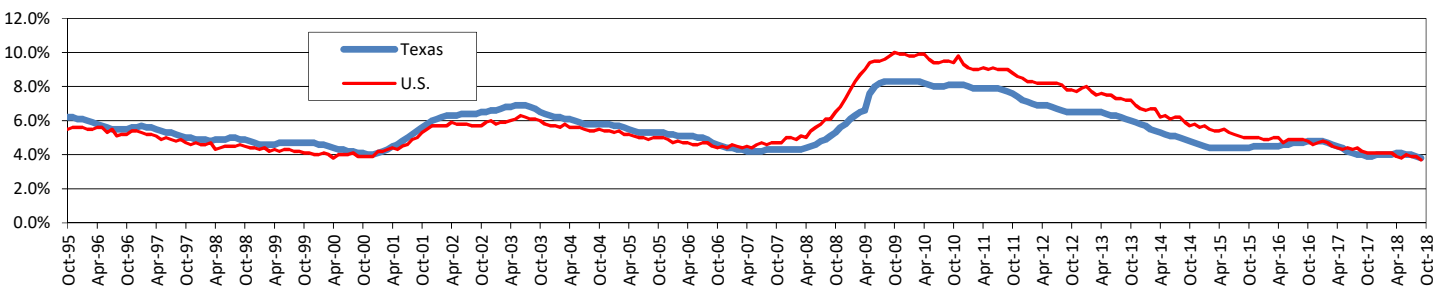
Goods Producing Sector Index, 1995=100



TEXAS NONAGRICULTURAL WAGE AND SALARY EMPLOYMENT SEASONALLY ADJUSTED

INDUSTRY TITLE	Oct 2018	Sep 2018	Oct 2017	Sep '18 to Oct '18		Oct '17 to Oct '18	
				Absolute Change	Percent Change	Absolute Change	Percent Change
Total Nonagricultural	12,685,700	12,653,400	12,300,900	32,300	0.3	384,800	3.1
Total Private	10,745,400	10,713,700	10,361,200	31,700	0.3	384,200	3.7
Goods-Producing	1,921,200	1,915,900	1,802,200	5,300	0.3	119,000	6.6
Mining and Logging	267,400	263,100	228,200	4,300	1.6	39,200	17.2
Construction	771,300	769,800	721,400	1,500	0.2	49,900	6.9
Manufacturing	882,500	883,000	852,600	-500	-0.1	29,900	3.5
Service-Providing	10,764,500	10,737,500	10,498,700	27,000	0.3	265,800	2.5
Trade, Transportation, and Utilities	2,537,100	2,528,200	2,464,400	8,900	0.4	72,700	3.0
Information	195,600	195,400	200,200	200	0.1	-4,600	-2.3
Financial Activities	785,200	783,100	763,500	2,100	0.3	21,700	2.8
Professional and Business Services	1,762,500	1,763,100	1,684,900	-600	0.0	77,600	4.6
Education and Health Services	1,718,300	1,713,200	1,671,300	5,100	0.3	47,000	2.8
Leisure and Hospitality	1,383,700	1,375,000	1,347,100	8,700	0.6	36,600	2.7
Other Services	441,800	439,800	427,600	2,000	0.5	14,200	3.3
Government	1,940,300	1,939,700	1,939,700	600	0.0	600	0.0

Texas and U.S. Unemployment Rates (Seasonally Adjusted)



TEXAS AND U.S. CIVILIAN LABOR FORCE ESTIMATES (Seasonally Adjusted)

	TEXAS				UNITED STATES				
	CLF	EMP	UNEMP	RATE	CLF	EMP	UNEMP	RATE	
Oct '18	13,833,500	13,316,800	516,700	3.7	Oct '18	162,637,000	156,562,000	6,075,000	3.7
Sep '18	13,816,200	13,290,700	525,600	3.8	Sep '18	161,926,000	155,962,000	5,964,000	3.7
Oct '17	13,592,100	13,057,400	534,700	3.9	Oct '17	160,381,000	153,861,000	6,520,000	4.1