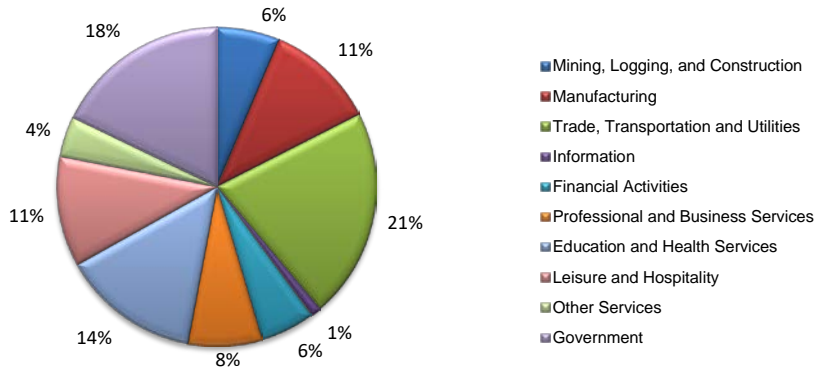
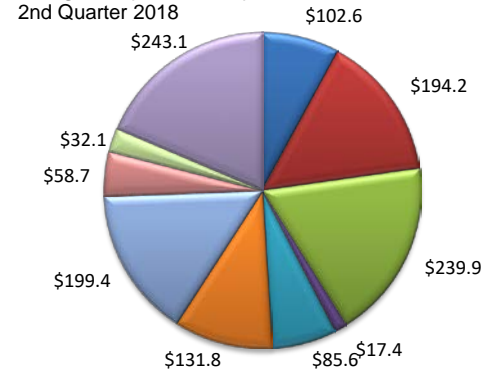


(Armstrong, Carson, Oldham, Potter, Randall)

Industry Composition



Wages by Industry (in millions)



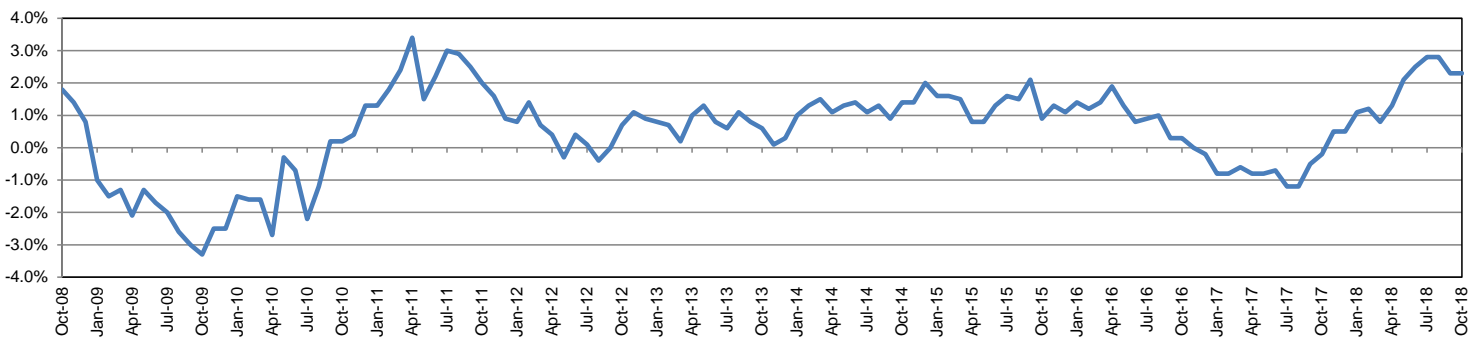
Employment by Industry

				Monthly Change		Annual Change	
	Oct-18	Sep-18	Oct-17	Actual	%	Actual	%
	Oct-18	Sep-18	Oct-17	Actual	%	Actual	%
Total Nonfarm	122,600	121,400	119,900	1,200	1.0%	2,700	2.3%
Mining, Logging and Construction	7,800	7,700	7,200	100	1.3%	600	8.3%
Manufacturing	13,700	13,700	13,400	0	0.0%	300	2.2%
Trade, Transportation, and Utilities	26,100	25,800	25,400	300	1.2%	700	2.8%
Information	1,300	1,300	1,300	0	0.0%	0	0.0%
Financial Activities	6,800	6,800	6,700	0	0.0%	100	1.5%
Professional and Business Services	9,200	9,300	9,300	-100	-1.1%	-100	-1.1%
Education and Health Services	17,100	17,100	16,600	0	0.0%	500	3.0%
Leisure and Hospitality	13,700	13,800	13,300	-100	-0.7%	400	3.0%
Other Services	5,000	4,900	4,900	100	2.0%	100	2.0%
Government	21,900	21,000	21,800	900	4.3%	100	0.5%

Industry Size Class

Size Class	Employees per firm	Number of Firms	June 2018	
			Employment in Size Class	% Total Employment
9	1000+	14	30,978	26.8%
8	500-999	11	7,569	6.6%
7	250-499	19	6,286	5.4%
6	100-249	111	16,126	14.0%
5	50-99	215	14,761	12.8%
4	20-49	555	17,291	15.0%
3	10-19	773	10,482	9.1%
2	5-9	1,024	6,845	5.9%
1	1-4	2,619	5,165	4.5%
0	0	560	0	0.0%
Total		5,901	115,503	100.0%

Annual Growth Rate for Total Nonagricultural Employment



Unemployment Information (all estimates in thousands)

	Amarillo MSA				Texas (Actual)				United States (Actual)			
	C.L.F.	Emp.	Unemp.	Rate	C.L.F.	Emp.	Unemp.	Rate	C.L.F.	Emp.	Unemp.	Rate
Oct-18	133.5	130.1	3.4	2.5	13,869.5	13,390.6	478.9	3.5	162,723.0	165,952.0	5,711.0	3.5
Sep-18	132.5	128.9	3.6	2.7	13,802.1	13,285.1	517.0	3.7	161,958.0	156,191.0	5,766.0	3.6
Oct-17	130.9	127.6	3.4	2.6	13,536.2	13,034.6	501.6	3.7	160,465.0	154,223.0	6,242.0	3.9

Historical Unemployment Rates

