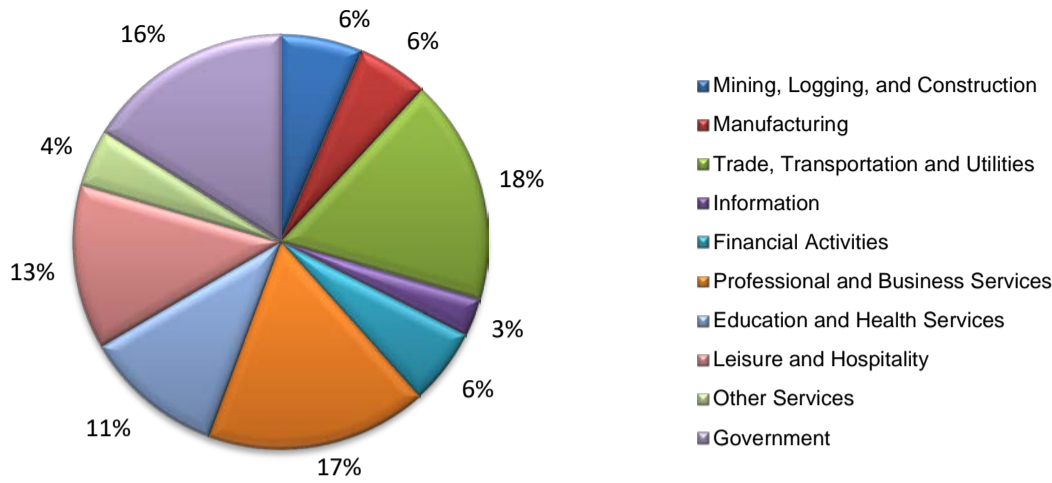
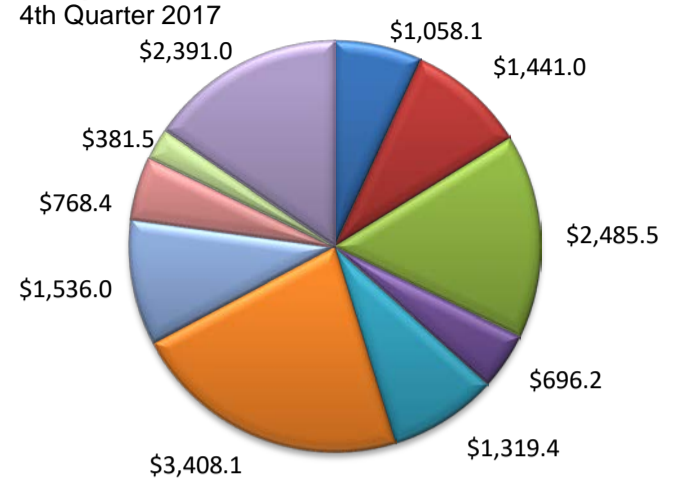


(Bastrop, Caldwell, Hays, Travis, Williamson)

Industry Composition



Wages by Industry (in millions)



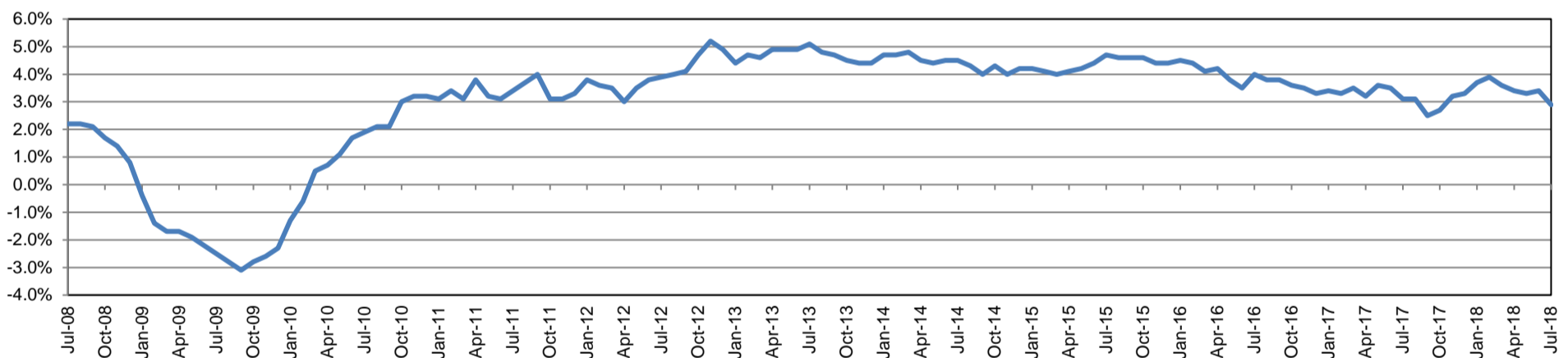
Employment by Industry

	Jul-18	Jun-18	Jul-17	Monthly Change		Annual Change	
				Actual	%	Actual	%
Total Nonfarm	1,059,800	1,073,600	1,029,800	-13,800	-1.3%	30,000	2.9%
Mining, Logging and Construction	67,400	65,200	62,900	2,200	3.4%	4,500	7.2%
Manufacturing	58,400	59,300	57,900	-900	-1.5%	500	0.9%
Trade, Transportation, and Utilities	186,600	185,400	176,500	1,200	0.6%	10,100	5.7%
Information	31,000	31,000	30,500	0	0.0%	500	1.6%
Financial Activities	63,000	63,100	60,400	-100	-0.2%	2,600	4.3%
Professional and Business Services	183,400	185,700	176,500	-2,300	-1.2%	6,900	3.9%
Education and Health Services	116,100	118,900	119,400	-2,800	-2.4%	-3,300	-2.8%
Leisure and Hospitality	136,200	137,200	127,000	-1,000	-0.7%	9,200	7.2%
Other Services	47,100	47,200	45,900	-100	-0.2%	1,200	2.6%
Government	170,600	180,600	172,800	-10,000	-5.5%	-2,200	-1.3%

Industry Size Class

Size Class	Employees per firm	Number of Firms	December 2017		
			Employment in Size Class	% Total Employment	
9	1000+	94	287,455	28.6%	
8	500-999	140	97,577	9.7%	
7	250-499	303	103,625	10.3%	
6	100-249	963	146,126	14.5%	
5	50-99	1,410	97,673	9.7%	
4	20-49	3,776	115,145	11.5%	
3	10-19	4,996	67,767	6.7%	
2	5-9	6,813	45,138	4.5%	
1	1-4	24,184	44,720	4.4%	
0	0	6,371	0	0.0%	
Total			49,050	1,005,226	100.0%

Annual Growth Rate for Total Nonagricultural Employment



Unemployment Information (all estimates in thousands)

	Austin-Round Rock MSA				Texas (Actual)				United States (Actual)			
	C.L.F.	Emp.	Unemp.	Rate	C.L.F.	Emp.	Unemp.	Rate	C.L.F.	Emp.	Unemp.	Rate
Jul-18	1,186.3	1,149.7	36.6	3.1	13,840.5	13,283.9	556.6	4.0	163,734.0	157,004.0	6,730.0	4.1
Jun-18	1,191.2	1,153.1	38.1	3.2	13,845.0	13,262.0	583.0	4.2	163,277.0	156,465.0	6,812.0	4.2
Jul-17	1,158.3	1,120.3	38.1	3.3	13,571.9	12,967.6	604.2	4.5	161,911.0	154,470.0	7,441.0	4.6

Historical Unemployment Rates

