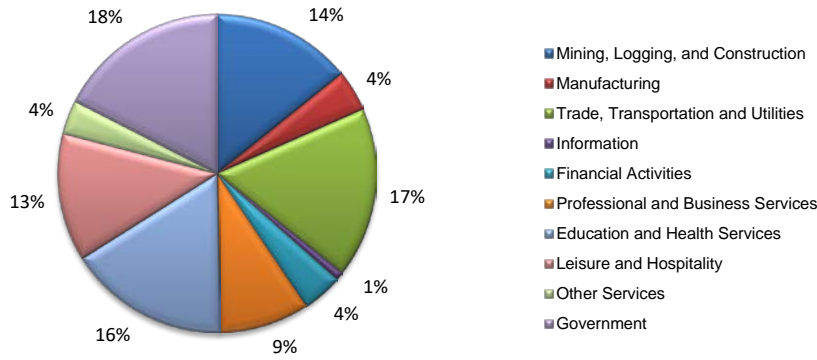
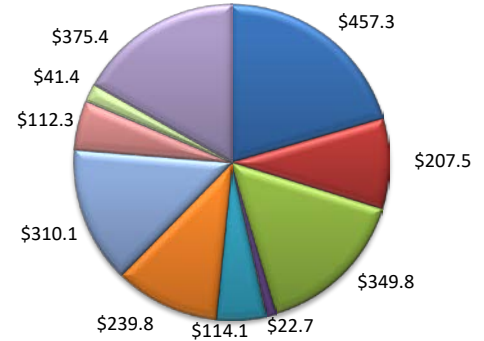


(Aransas, Nueces, San Patricio)

Industry Composition



Wages by Industry (in millions)
1st Quarter 2018



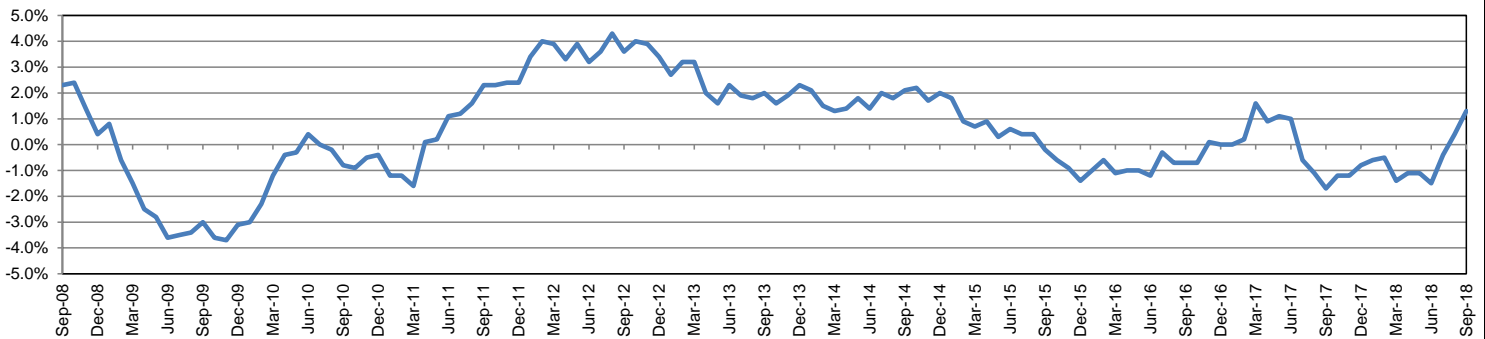
Employment by Industry

				Monthly Change		Annual Change	
	Sep-18	Aug-18	Sep-17	Actual	%	Actual	%
Total Nonfarm	191,800	191,800	189,400	0	0.0%	2,400	1.3%
Mining, Logging and Construction	27,300	27,500	25,800	-200	-0.7%	1,500	5.8%
Manufacturing	8,000	8,100	8,100	-100	-1.2%	-100	-1.2%
Trade, Transportation, and Utilities	33,000	33,200	32,900	-200	-0.6%	100	0.3%
Information	1,700	1,700	1,800	0	0.0%	-100	-5.6%
Financial Activities	7,900	7,900	7,700	0	0.0%	200	2.6%
Professional and Business Services	17,400	17,600	17,400	-200	-1.1%	0	0.0%
Education and Health Services	31,500	31,400	30,900	100	0.3%	600	1.9%
Leisure and Hospitality	24,800	25,400	24,600	-600	-2.4%	200	0.8%
Other Services	6,600	6,700	6,500	-100	-1.5%	100	1.5%
Government	33,600	32,300	33,700	1,300	4.0%	-100	-0.3%

Industry Size Class

March 2018				
Size Class	Employees per firm	Number of Firms	Employment in Size Class	% Total Employment
9	1000+	19	46,539	24.8%
8	500-999	24	16,460	8.8%
7	250-499	48	16,667	8.9%
6	100-249	220	32,338	17.2%
5	50-99	280	19,347	10.3%
4	20-49	786	24,076	12.8%
3	10-19	1,096	14,994	8.0%
2	5-9	1,496	9,826	5.2%
1	1-4	3,553	7,324	3.9%
0	0	731	0	0.0%
Total		8,253	187,571	100.0%

Annual Growth Rate for Total Nonagricultural Employment



Unemployment Information (all estimates in thousands)

	Corpus Christi MSA				Texas (Actual)				United States (Actual)			
	C.L.F.	Emp.	Unemp.	Rate	C.L.F.	Emp.	Unemp.	Rate	C.L.F.	Emp.	Unemp.	Rate
Sep-18	205.6	195.7	9.9	4.8	13,802.3	13,285.7	516.6	3.7	161,958.0	156,191.0	5,766.0	3.6
Aug-18	205.4	195.2	10.2	5.0	13,750.1	13,210.7	539.4	3.9	161,909.0	155,539.0	6,370.0	3.9
Sep-17	207.7	195.1	12.6	6.0	13,619.5	13,070.6	548.8	4.0	161,049.0	154,494.0	6,556.0	4.1

Historical Unemployment Rates

