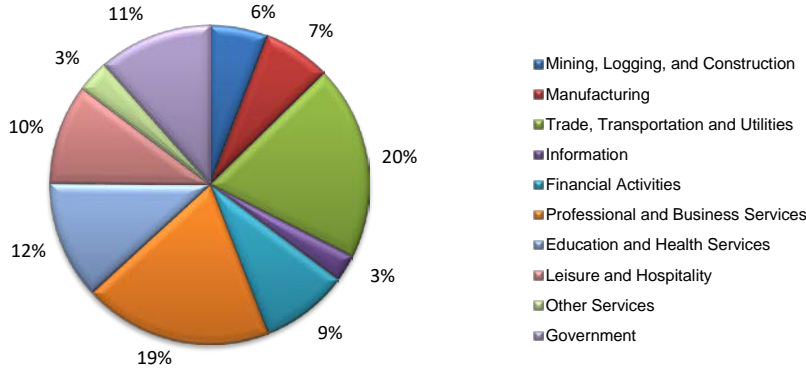
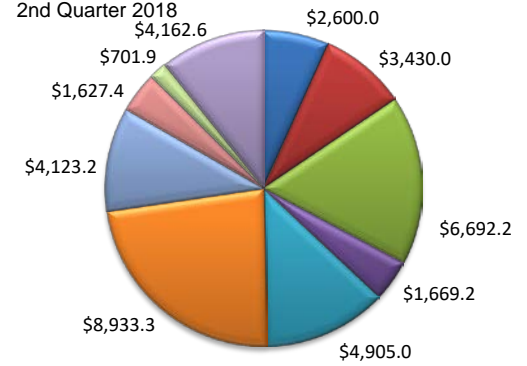


(Collin, Dallas, Denton, Ellis, Hunt, Kaufman, Rockwall)

Industry Composition



Wages by Industry (in millions)



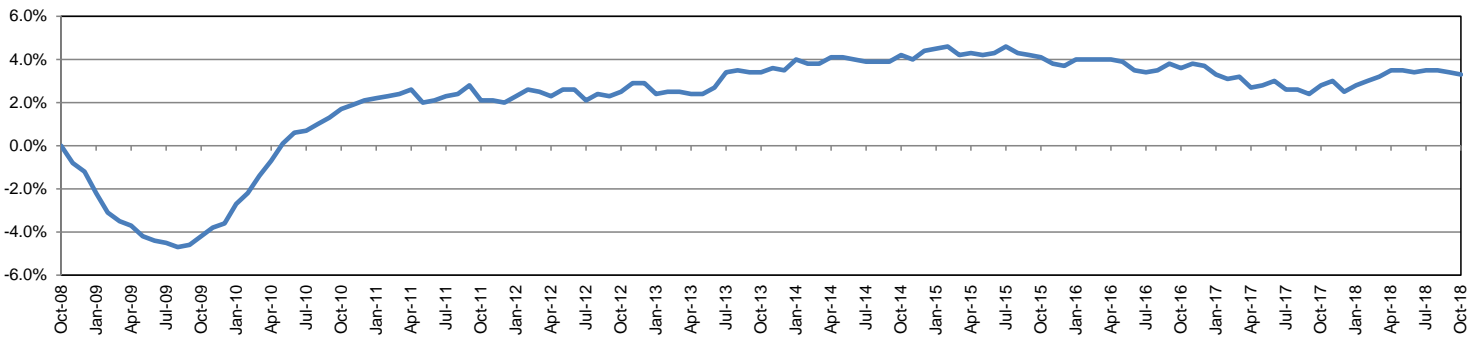
Employment by Industry

| | | | Monthly Change | | Annual Change | | |
|--------------------------------------|------------------|------------------|------------------|---------------|---------------|---------------|-------------|
| | Oct-18 | Sep-18 | Oct-17 | Actual | % | Actual | % |
| | | | | | | | |
| Total Nonfarm | 2,686,600 | 2,662,200 | 2,601,600 | 24,400 | 0.9% | 85,000 | 3.3% |
| Mining, Logging and Construction | 157,300 | 155,900 | 144,200 | 1,400 | 0.9% | 13,100 | 9.1% |
| Manufacturing | 183,700 | 183,200 | 178,800 | 500 | 0.3% | 4,900 | 2.7% |
| Trade, Transportation, and Utilities | 529,700 | 525,900 | 521,900 | 3,800 | 0.7% | 7,800 | 1.5% |
| Information | 73,400 | 72,800 | 71,500 | 600 | 0.8% | 1,900 | 2.7% |
| Financial Activities | 240,300 | 239,800 | 236,800 | 500 | 0.2% | 3,500 | 1.5% |
| Professional and Business Services | 513,600 | 506,800 | 486,200 | 6,800 | 1.3% | 27,400 | 5.6% |
| Education and Health Services | 320,500 | 319,000 | 311,200 | 1,500 | 0.5% | 9,300 | 3.0% |
| Leisure and Hospitality | 271,700 | 268,400 | 263,000 | 3,300 | 1.2% | 8,700 | 3.3% |
| Other Services | 88,100 | 87,100 | 84,900 | 1,000 | 1.1% | 3,200 | 3.8% |
| Government | 308,300 | 303,300 | 303,100 | 5,000 | 1.6% | 5,200 | 1.7% |

Industry Size Class

| Size Class | Employees per firm | Number of Firms | June 2018 | | |
|--------------|--------------------|-----------------|--------------------------|--------------------|---------------|
| | | | Employment in Size Class | % Total Employment | |
| 9 | 1000+ | 305 | 822,925 | 32.6% | |
| 8 | 500-999 | 380 | 265,716 | 10.5% | |
| 7 | 250-499 | 794 | 273,877 | 10.9% | |
| 6 | 100-249 | 2,261 | 344,734 | 13.7% | |
| 5 | 50-99 | 3,214 | 223,558 | 8.9% | |
| 4 | 20-49 | 8,288 | 254,236 | 10.1% | |
| 3 | 10-19 | 10,573 | 143,628 | 5.7% | |
| 2 | 5-9 | 14,977 | 99,166 | 3.9% | |
| 1 | 1-4 | 49,494 | 93,320 | 3.7% | |
| 0 | 0 | 13,685 | 0 | 0.0% | |
| Total | | | 103,971 | 2,521,160 | 100.0% |

Annual Growth Rate for Total Nonagricultural Employment



Unemployment Information (all estimates in thousands)

| | Dallas-Plano-Irving MD | | | | Texas (Actual) | | | | United States (Actual) | | | |
|--------|------------------------|---------|--------|------|----------------|----------|--------|------|------------------------|-----------|---------|------|
| | C.L.F. | Emp. | Unemp. | Rate | C.L.F. | Emp. | Unemp. | Rate | C.L.F. | Emp. | Unemp. | Rate |
| Oct-18 | 2,659.9 | 2,575.4 | 84.4 | 3.2 | 13,869.5 | 13,390.6 | 478.9 | 3.5 | 162,723.0 | 165,952.0 | 5,711.0 | 3.5 |
| Sep-18 | 2,639.8 | 2,549.6 | 90.1 | 3.4 | 13,802.1 | 13,285.1 | 517.0 | 3.7 | 161,958.0 | 156,191.0 | 5,766.0 | 3.6 |
| Oct-17 | 2,576.1 | 2,494.4 | 81.7 | 3.2 | 13,536.2 | 13,034.6 | 501.6 | 3.7 | 160,465.0 | 154,223.0 | 6,242.0 | 3.9 |

Historical Unemployment Rates

