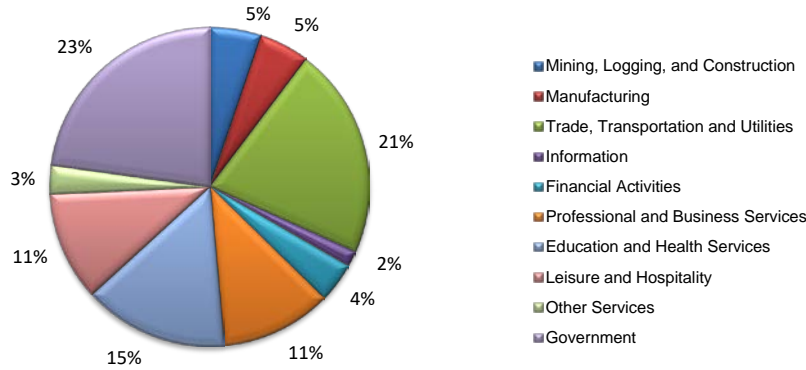
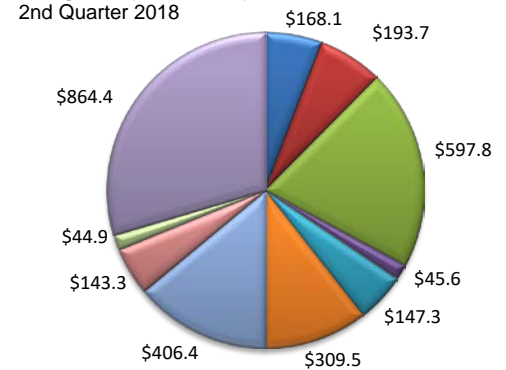


(El Paso, Hudspeth)

Industry Composition



Wages by Industry (in millions)



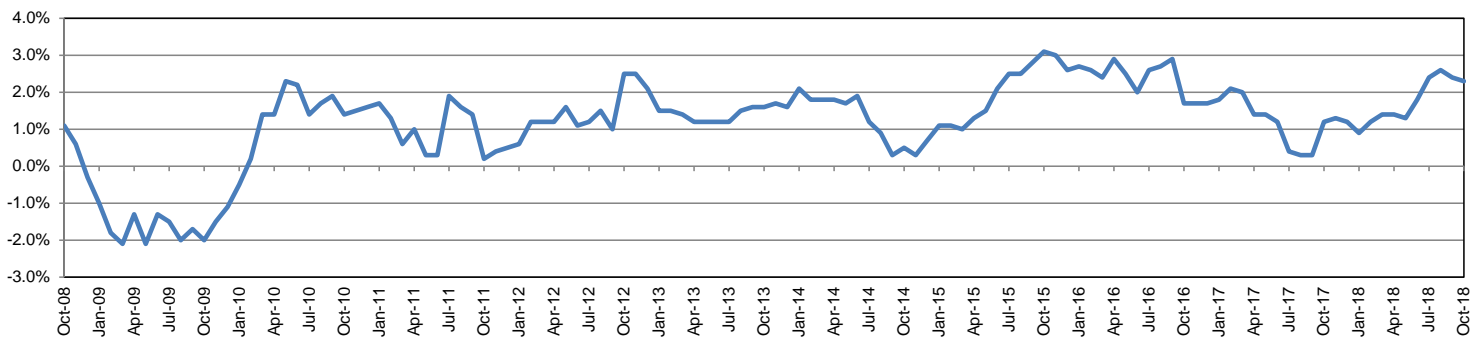
Employment by Industry

				Monthly Change		Annual Change	
	Oct-18	Sep-18	Oct-17	Actual	%	Actual	%
Total Nonfarm	321,700	319,700	314,400	2,000	0.6%	7,300	2.3%
Mining, Logging and Construction	16,600	16,300	15,500	300	1.8%	1,100	7.1%
Manufacturing	16,400	16,500	16,500	-100	-0.6%	-100	-0.6%
Trade, Transportation, and Utilities	68,900	68,700	68,000	200	0.3%	900	1.3%
Information	5,000	5,000	5,100	0	0.0%	-100	-2.0%
Financial Activities	13,100	13,000	12,700	100	0.8%	400	3.1%
Professional and Business Services	36,300	35,800	34,400	500	1.4%	1,900	5.5%
Education and Health Services	47,100	46,800	45,600	300	0.6%	1,500	3.3%
Leisure and Hospitality	35,600	35,900	34,700	-300	-0.8%	900	2.6%
Other Services	9,200	9,200	9,100	0	0.0%	100	1.1%
Government	73,500	72,500	72,800	1,000	1.4%	700	1.0%

Industry Size Class

Size Class	Employees per firm	Number of Firms	June 2018	
			Employment in Size Class	% Total Employment
9	1000+	29	86,449	28.3%
8	500-999	44	29,557	9.7%
7	250-499	108	36,017	11.8%
6	100-249	288	44,899	14.7%
5	50-99	427	29,373	9.6%
4	20-49	1,079	32,851	10.8%
3	10-19	1,459	19,877	6.5%
2	5-9	2,187	14,480	4.7%
1	1-4	5,631	11,637	3.8%
0	0	1,257	0	0.0%
Total		12,509	305,140	100.0%

Annual Growth Rate for Total Nonagricultural Employment



Unemployment Information (all estimates in thousands)

	El Paso MSA				Texas (Actual)				United States (Actual)			
	C.L.F.	Emp.	Unemp.	Rate	C.L.F.	Emp.	Unemp.	Rate	C.L.F.	Emp.	Unemp.	Rate
Oct-18	362.0	347.9	14.1	3.9	13,869.5	13,390.6	478.9	3.5	162,723.0	165,952.0	5,711.0	3.5
Sep-18	360.4	345.2	15.2	4.2	13,802.1	13,285.1	517.0	3.7	161,958.0	156,191.0	5,766.0	3.6
Oct-17	354.2	339.8	14.4	4.1	13,536.2	13,034.6	501.6	3.7	160,465.0	154,223.0	6,242.0	3.9

Historical Unemployment Rates

