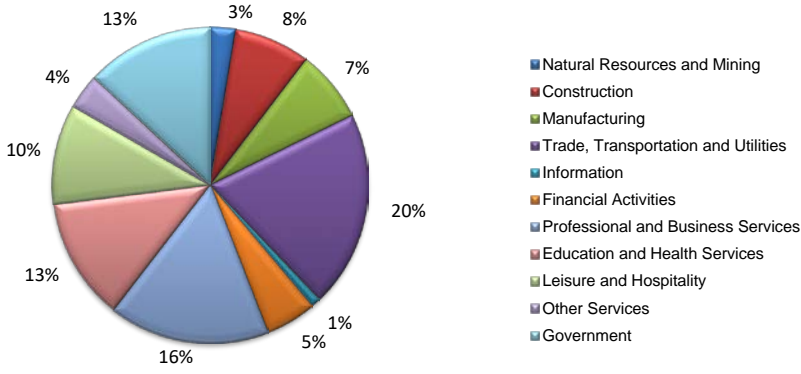
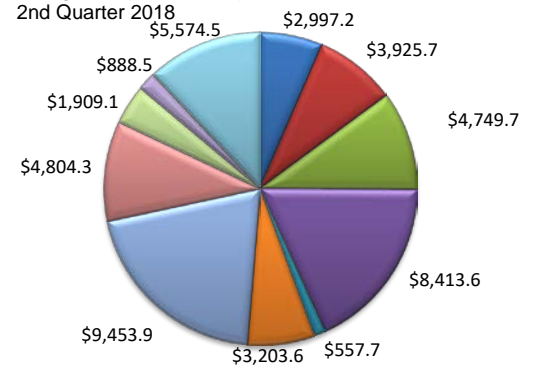


(Austin, Brazoria, Chambers, Fort Bend, Galveston, Harris, Liberty, Montgomery, Waller)

Industry Composition



Wages by Industry (in millions)



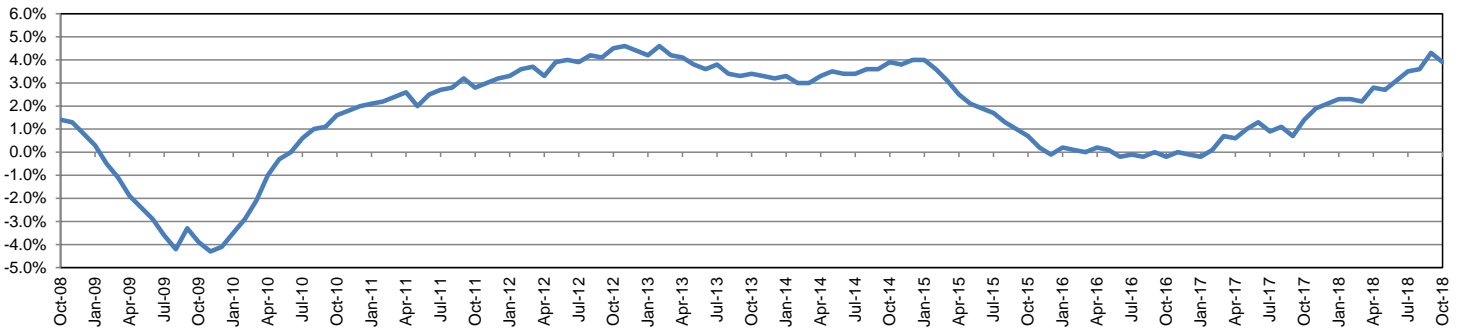
Employment by Industry

				Monthly Change		Annual Change	
	Oct-18	Sep-18	Oct-17	Actual	%	Actual	%
	Oct-18	Sep-18	Oct-17	Actual	%	Actual	%
<b>Total Nonfarm</b>	<b>3,158,800</b>	<b>3,135,200</b>	<b>3,041,000</b>	<b>23,600</b>	<b>0.8%</b>	<b>117,800</b>	<b>3.9%</b>
Mining and Logging	81,600	80,400	77,100	1,200	1.5%	4,500	5.8%
Construction	245,800	243,700	220,200	2,100	0.9%	25,600	11.6%
Manufacturing	232,800	232,600	216,700	200	0.1%	16,100	7.4%
Trade, Transportation, and Utilities	635,900	629,800	619,900	6,100	1.0%	16,000	2.6%
Information	31,000	30,800	31,200	200	0.6%	-200	-0.6%
Financial Activities	165,200	164,600	160,400	600	0.4%	4,800	3.0%
Professional and Business Services	519,400	517,000	488,800	2,400	0.5%	30,600	6.3%
Education and Health Services	395,100	394,100	386,300	1,000	0.3%	8,800	2.3%
Leisure and Hospitality	323,600	324,100	319,900	-500	-0.2%	3,700	1.2%
Other Services	114,600	112,500	108,500	2,100	1.9%	6,100	5.6%
Government	413,800	405,600	412,000	8,200	2.0%	1,800	0.4%

Industry Size Class

Size Class	Employees per firm	Number of Firms	June 2018	
			Employment in Size Class	% Total Employment
9	1000+	337	1,053,866	35.5%
8	500-999	409	280,931	9.5%
7	250-499	839	292,138	9.8%
6	100-249	2,521	385,712	13.0%
5	50-99	3,631	252,638	8.5%
4	20-49	9,462	289,511	9.7%
3	10-19	12,628	171,308	5.8%
2	5-9	19,187	126,723	4.3%
1	1-4	61,610	119,467	4.0%
0	0	15,359	0	0.0%
<b>Total</b>		<b>125,983</b>	<b>2,972,294</b>	<b>100.0%</b>

Annual Growth Rate for Total Nonagricultural Employment



Unemployment Information

(all estimates in thousands)

	Houston-The Woodlands-Sugar Land MSA				Texas (Actual)				United States (Actual)			
	C.L.F.	Emp.	Unemp.	Rate	C.L.F.	Emp.	Unemp.	Rate	C.L.F.	Emp.	Unemp.	Rate
Oct-18	3,420.9	3,292.1	128.8	3.8	13,869.5	13,390.6	478.9	3.5	162,723.0	165,952.0	5,711.0	3.5
Sep-18	3,405.3	3,264.4	140.8	4.1	13,802.1	13,285.1	517.0	3.7	161,958.0	156,191.0	5,766.0	3.6
Oct-17	3,317.1	3,172.3	144.8	4.4	13,536.2	13,034.6	501.6	3.7	160,465.0	154,223.0	6,242.0	3.9

Historical Unemployment Rates

