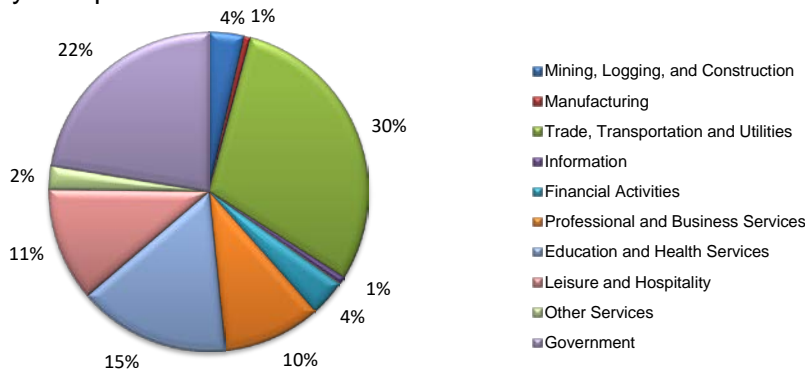
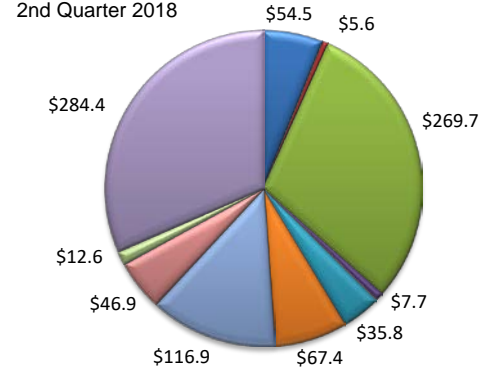


(Webb)

Industry Composition



Wages by Industry (in millions)



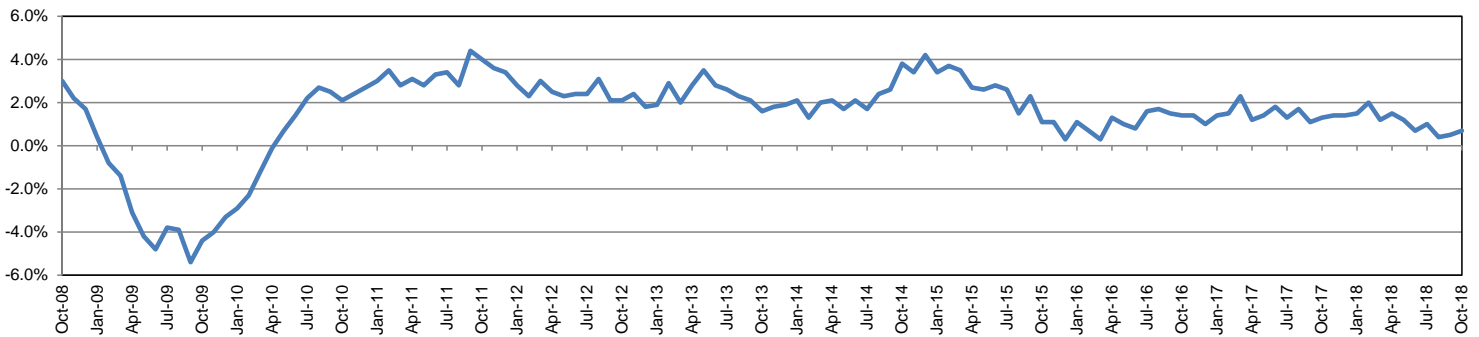
Employment by Industry

	Oct-18	Sep-18	Oct-17	Monthly Change		Annual Change	
				Actual	%	Actual	%
Total Nonfarm	104,800	104,300	104,100	500	0.5%	700	0.7%
Mining, Logging and Construction	3,700	3,800	4,100	-100	-2.6%	-400	-9.8%
Manufacturing	700	700	700	0	0.0%	0	0.0%
Trade, Transportation, and Utilities	31,200	31,100	31,100	100	0.3%	100	0.3%
Information	800	800	700	0	0.0%	100	14.3%
Financial Activities	3,900	3,900	3,900	0	0.0%	0	0.0%
Professional and Business Services	10,400	10,200	9,700	200	2.0%	700	7.2%
Education and Health Services	16,100	16,100	16,700	0	0.0%	-600	-3.6%
Leisure and Hospitality	12,000	12,000	11,400	0	0.0%	600	5.3%
Other Services	2,500	2,400	2,400	100	4.2%	100	4.2%
Government	23,500	23,300	23,400	200	0.9%	100	0.4%

Industry Size Class

Size Class	Employees per firm	Number of Firms	June 2018	
			Employment in Size Class	% Total Employment
9	1000+	10	24,337	24.0%
8	500-999	11	7,937	7.8%
7	250-499	15	5,251	5.2%
6	100-249	119	18,006	17.8%
5	50-99	162	11,418	11.3%
4	20-49	484	14,633	14.5%
3	10-19	677	9,140	9.0%
2	5-9	891	5,879	5.8%
1	1-4	2,199	4,625	4.6%
0	0	337	0	0.0%
Total		4,905	101,226	100.0%

Annual Growth Rate for Total Nonagricultural Employment



Unemployment Information (all estimates in thousands)

	Laredo MSA				Texas (Actual)				United States (Actual)			
	C.L.F.	Emp.	Unemp.	Rate	C.L.F.	Emp.	Unemp.	Rate	C.L.F.	Emp.	Unemp.	Rate
Oct-18	115.0	111.0	4.0	3.5	13,869.5	13,390.6	478.9	3.5	162,723.0	165,952.0	5,711.0	3.5
Sep-18	114.4	110.2	4.2	3.6	13,802.1	13,285.1	517.0	3.7	161,958.0	156,191.0	5,766.0	3.6
Oct-17	114.0	110.1	3.9	3.4	13,536.2	13,034.6	501.6	3.7	160,465.0	154,223.0	6,242.0	3.9

Historical Unemployment Rates

