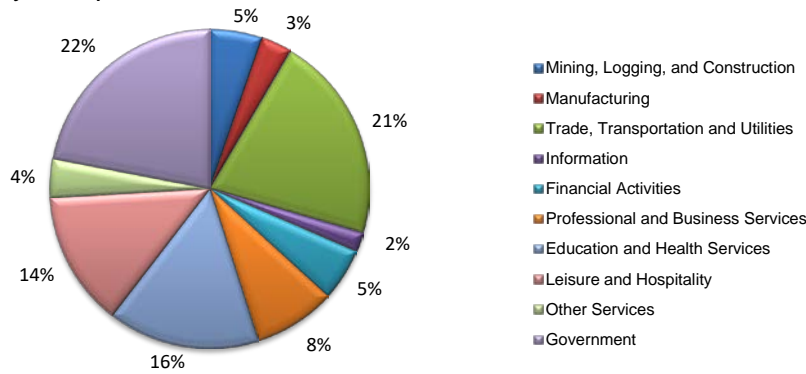
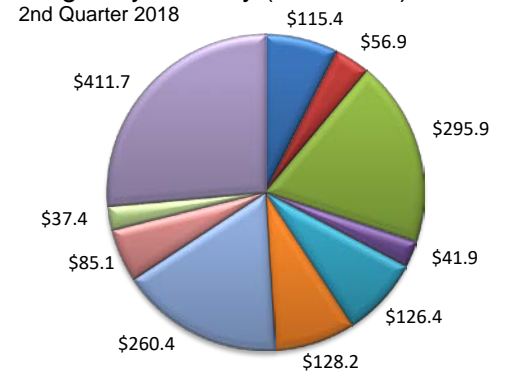


(Crosby, Lubbock, Lynn)

Industry Composition



Wages by Industry (in millions)



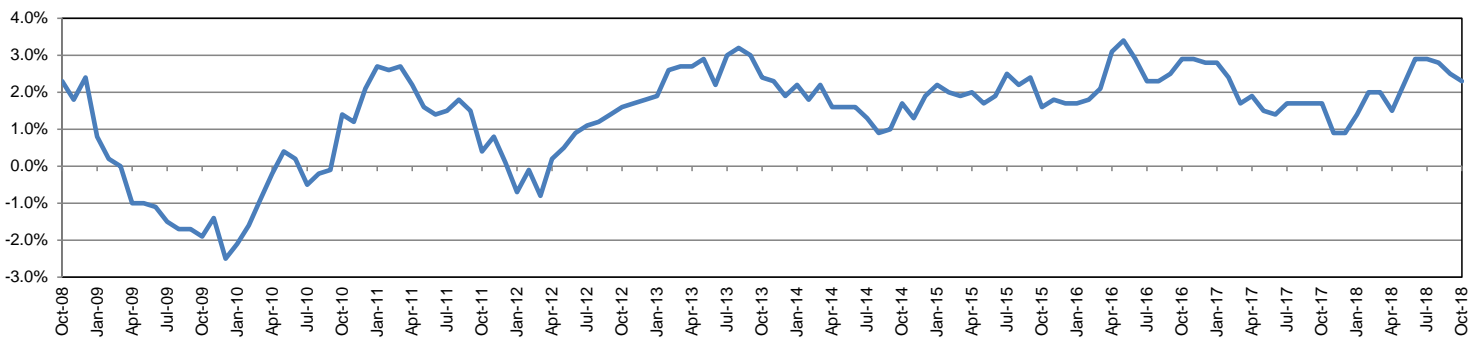
Employment by Industry

				Monthly Change		Annual Change	
	Oct-18	Sep-18	Oct-17	Actual	%	Actual	%
<b>Total Nonfarm</b>	152,800	151,500	149,400	1,300	0.9%	3,400	2.3%
Mining, Logging and Construction	8,100	8,100	7,800	0	0.0%	300	3.8%
Manufacturing	4,800	4,800	4,800	0	0.0%	0	0.0%
Trade, Transportation, and Utilities	32,100	31,900	30,700	200	0.6%	1,400	4.6%
Information	3,000	2,900	3,000	100	3.4%	0	0.0%
Financial Activities	8,200	8,200	8,100	0	0.0%	100	1.2%
Professional and Business Services	12,700	13,000	12,800	-300	-2.3%	-100	-0.8%
Education and Health Services	23,500	23,200	23,200	300	1.3%	300	1.3%
Leisure and Hospitality	20,800	20,800	19,800	0	0.0%	1,000	5.1%
Other Services	6,000	5,900	5,900	100	1.7%	100	1.7%
Government	33,600	32,700	33,300	900	2.8%	300	0.9%

Industry Size Class

Size Class	Employees per firm	Number of Firms	June 2018	
			Employment in Size Class	% Total Employment
9	1000+	10	31,375	22.0%
8	500-999	9	6,471	4.5%
7	250-499	40	13,930	9.8%
6	100-249	155	22,339	15.7%
5	50-99	291	20,210	14.2%
4	20-49	715	21,803	15.3%
3	10-19	915	12,402	8.7%
2	5-9	1,189	7,895	5.5%
1	1-4	3,030	6,082	4.3%
0	0	696	0	0.0%
<b>Total</b>		<b>7,050</b>	<b>142,507</b>	<b>100.0%</b>

Annual Growth Rate for Total Nonagricultural Employment



Unemployment Information (all estimates in thousands)

	Lubbock MSA				Texas (Actual)				United States (Actual)			
	C.L.F.	Emp.	Unemp.	Rate	C.L.F.	Emp.	Unemp.	Rate	C.L.F.	Emp.	Unemp.	Rate
Oct-18	165.2	160.6	4.5	2.7	13,869.5	13,390.6	478.9	3.5	162,723.0	165,952.0	5,711.0	3.5
Sep-18	164.4	159.4	4.9	3.0	13,802.1	13,285.1	517.0	3.7	161,958.0	156,191.0	5,766.0	3.6
Oct-17	161.4	157.1	4.3	2.7	13,536.2	13,034.6	501.6	3.7	160,465.0	154,223.0	6,242.0	3.9

Historical Unemployment Rates

