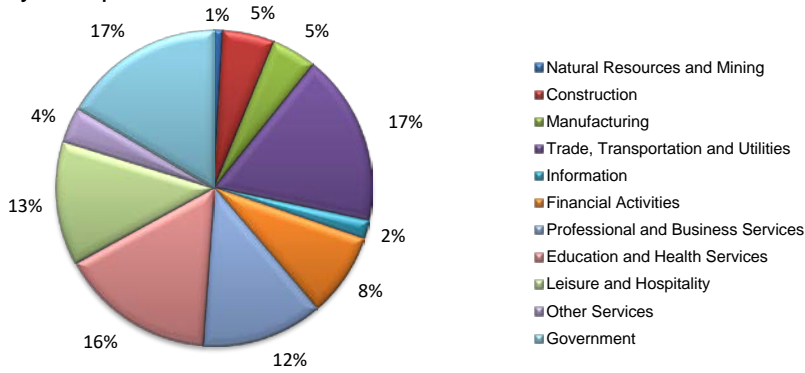
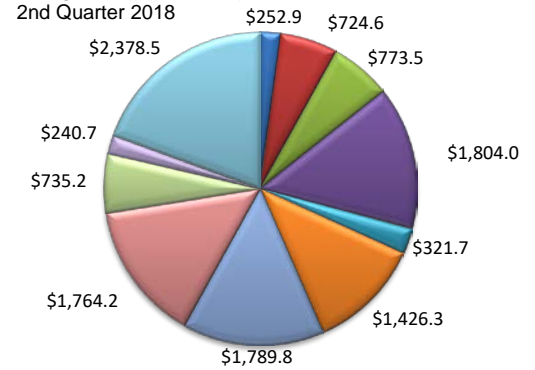


(Atascosa, Bandera, Bexar, Comal, Guadalupe, Kendall, Medina, Wilson)

Industry Composition



Wages by Industry (in millions)



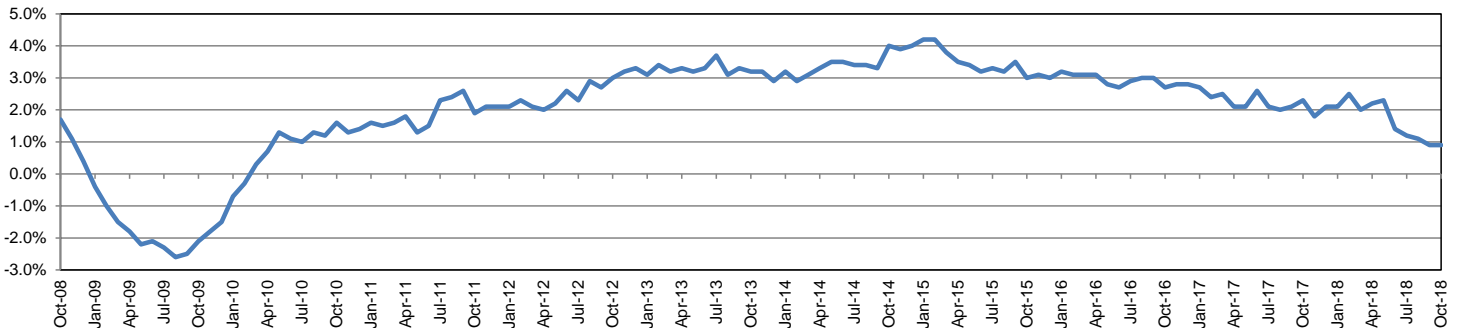
Employment by Industry

	Oct-18	Sep-18	Oct-17	Monthly Change		Annual Change	
				Actual	%	Actual	%
Total Nonfarm	1,059,000	1,054,200	1,049,800	4,800	0.5%	9,200	0.9%
Mining and Logging	9,100	9,000	8,100	100	1.1%	1,000	12.3%
Construction	55,700	55,100	53,400	600	1.1%	2,300	4.3%
Manufacturing	49,300	49,200	48,300	100	0.2%	1,000	2.1%
Trade, Transportation, and Utilities	185,700	184,100	182,800	1,600	0.9%	2,900	1.6%
Information	20,100	20,300	20,400	-200	-1.0%	-300	-1.5%
Financial Activities	90,300	89,600	90,100	700	0.8%	200	0.2%
Professional and Business Services	131,400	133,400	136,100	-2,000	-1.5%	-4,700	-3.5%
Education and Health Services	168,500	166,400	163,300	2,100	1.3%	5,200	3.2%
Leisure and Hospitality	134,500	134,900	135,700	-400	-0.3%	-1,200	-0.9%
Other Services	38,800	38,900	38,000	-100	-0.3%	800	2.1%
Government	175,600	173,300	173,600	2,300	1.3%	2,000	1.2%

Industry Size Class

Size Class	Employees per firm	Number of Firms	June 2018	
			Employment in Size Class	% Total Employment
9	1000+	114	351,779	34.5%
8	500-999	150	103,118	10.1%
7	250-499	287	97,767	9.6%
6	100-249	871	133,347	13.1%
5	50-99	1,340	93,887	9.2%
4	20-49	3,267	100,208	9.8%
3	10-19	4,401	59,767	5.9%
2	5-9	6,154	40,598	4.0%
1	1-4	20,724	38,787	3.8%
0	0	4,568	0	0.0%
Total		41,876	1,019,258	100.0%

Annual Growth Rate for Total Nonagricultural Employment



Unemployment Information (all estimates in thousands)

	San Antonio-New Braunfels MSA				Texas (Actual)				United States (Actual)			
	C.L.F.	Emp.	Unemp.	Rate	C.L.F.	Emp.	Unemp.	Rate	C.L.F.	Emp.	Unemp.	Rate
Oct-18	1,180.7	1,144.3	36.4	3.1	13,869.5	13,390.6	478.9	3.5	162,723.0	165,952.0	5,711.0	3.5
Sep-18	1,176.7	1,137.9	38.8	3.3	13,802.1	13,285.1	517.0	3.7	161,958.0	156,191.0	5,766.0	3.6
Oct-17	1,168.4	1,133.0	35.5	3.0	13,536.2	13,034.6	501.6	3.7	160,465.0	154,223.0	6,242.0	3.9

Historical Unemployment Rates

