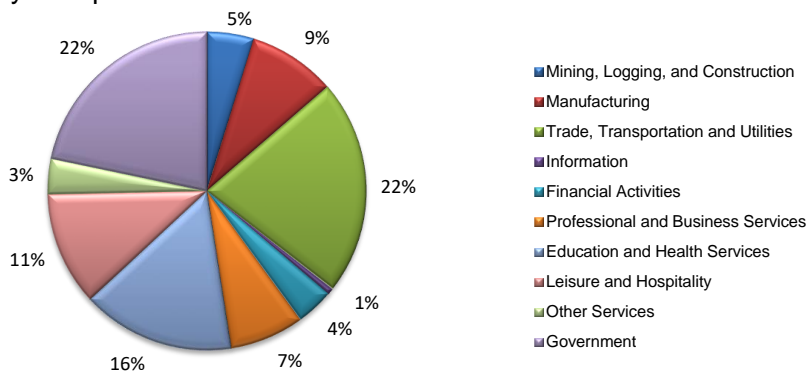
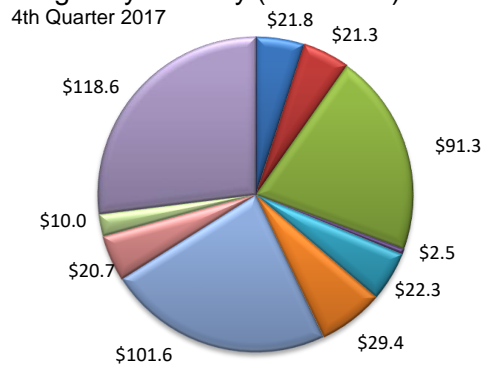


(Bowie County, TX and Little River County, Miller County, AR)

Industry Composition



Wages by Industry (in millions)*



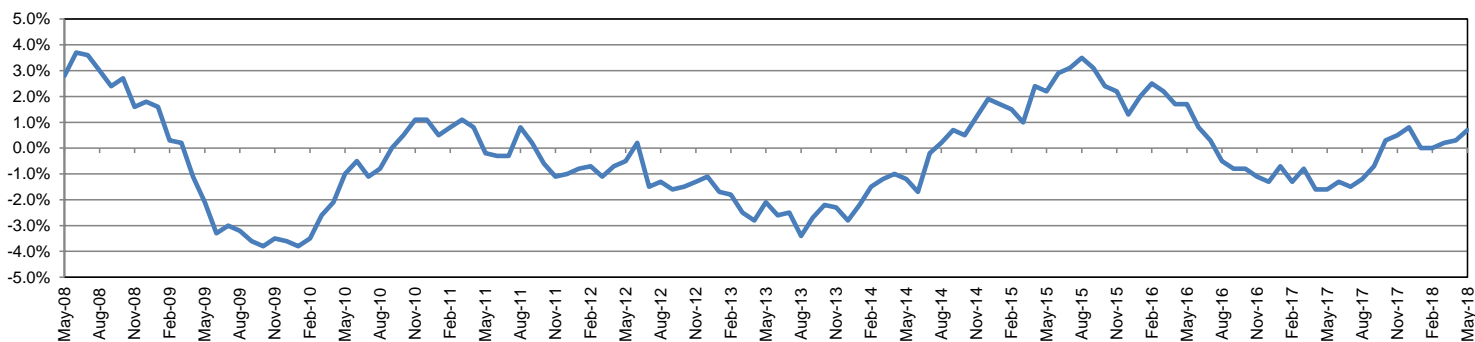
Employment by Industry

				Monthly Change		Annual Change	
	May-18	Apr-18	May-17	Actual	%	Actual	%
Total Nonfarm	60,800	60,400	60,400	400	0.7%	400	0.7%
Mining, Logging and Construction	2,900	2,900	2,900	0	0.0%	0	0.0%
Manufacturing	5,400	5,300	5,200	100	1.9%	200	3.8%
Trade, Transportation, and Utilities	13,300	13,300	13,400	0	0.0%	-100	-0.7%
Information	400	400	400	0	0.0%	0	0.0%
Financial Activities	2,300	2,200	2,200	100	4.5%	100	4.5%
Professional and Business Services	4,600	4,500	4,300	100	2.2%	300	7.0%
Education and Health Services	9,500	9,400	9,400	100	1.1%	100	1.1%
Leisure and Hospitality	7,000	7,000	7,000	0	0.0%	0	0.0%
Other Services	2,200	2,100	2,300	100	4.8%	-100	-4.3%
Government	13,200	13,300	13,300	-100	-0.8%	-100	-0.8%

Industry Size Class*

Size Class	Employees per firm	Number of Firms	December 2017	
			Employment in Size Class	% Total Employment
9	1000+	4	6,884	16.5%
8	500-999	5	3,093	7.4%
7	250-499	11	3,588	8.6%
6	100-249	48	7,091	17.0%
5	50-99	76	5,103	12.2%
4	20-49	243	7,280	17.4%
3	10-19	304	4,267	10.2%
2	5-9	393	2,635	6.3%
1	1-4	891	1,873	4.5%
0	0	140	0	0.0%
Total		2,115	41,814	100.0%

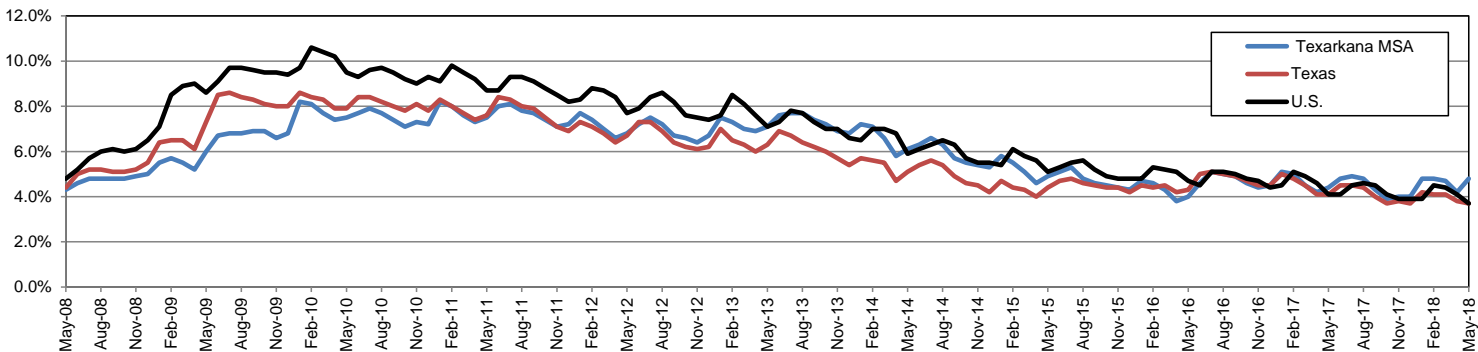
Annual Growth Rate for Total Nonagricultural Employment



Unemployment Information (all estimates in thousands)

	Texarkana MSA				Texas (Actual)				United States (Actual)			
	C.L.F.	Emp.	Unemp.	Rate	C.L.F.	Emp.	Unemp.	Rate	C.L.F.	Emp.	Unemp.	Rate
May-18	65.5	62.3	3.2	4.8	13,836.5	13,321.2	515.2	3.7	161,539.0	155,474.0	6,065.0	3.8
Apr-18	65.2	62.5	2.7	4.2	13,863.1	13,342.5	520.6	3.8	161,527.0	155,181.0	6,346.0	3.9
May-17	64.9	62.1	2.8	4.4	13,498.7	12,940.8	557.9	4.1	159,979.0	153,407.0	6,572.0	4.1

Historical Unemployment Rates



* Texas counties only. Available at <http://www.tracer2.com>