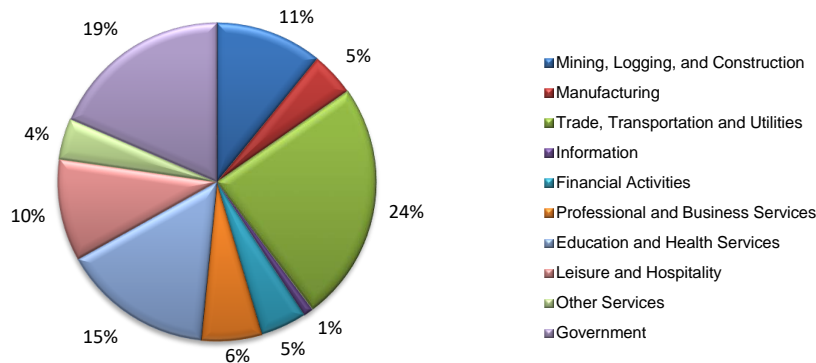
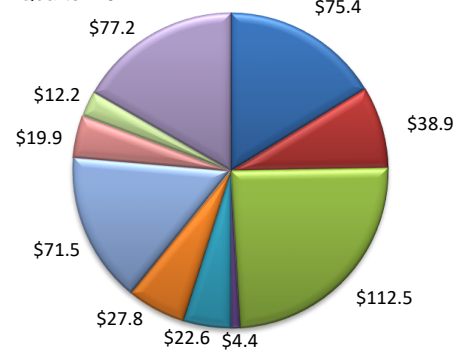


(Goliad, Victoria)

Industry Composition



Wages by Industry (in millions)
4th Quarter 2017



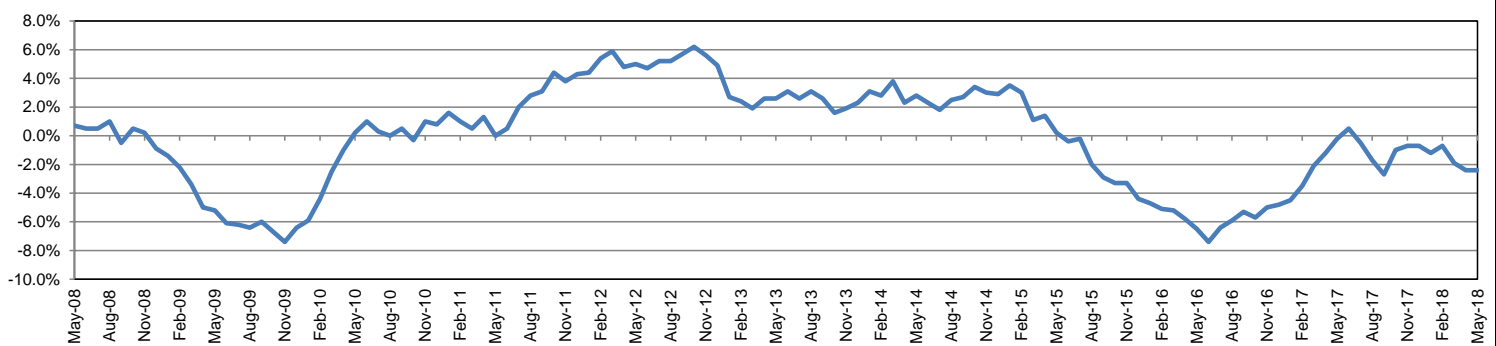
Employment by Industry

	May-18	Apr-18	May-17	Monthly Change		Annual Change	
				Actual	%	Actual	%
Total Nonfarm	40,500	40,400	41,500	100	0.2%	-1,000	-2.4%
Mining, Logging and Construction	4,400	4,300	4,500	100	2.3%	-100	-2.2%
Manufacturing	1,800	1,900	2,000	-100	-5.3%	-200	-10.0%
Trade, Transportation, and Utilities	9,900	9,900	9,900	0	0.0%	0	0.0%
Information	400	400	400	0	0.0%	0	0.0%
Financial Activities	1,900	1,900	1,900	0	0.0%	0	0.0%
Professional and Business Services	2,500	2,500	2,600	0	0.0%	-100	-3.8%
Education and Health Services	6,200	6,200	6,300	0	0.0%	-100	-1.6%
Leisure and Hospitality	4,200	4,100	4,400	100	2.4%	-200	-4.5%
Other Services	1,700	1,700	1,700	0	0.0%	0	0.0%
Government	7,500	7,500	7,800	0	0.0%	-300	-3.8%

Industry Size Class

Size Class	Employees per firm	Number of Firms	December 2017	
			Employment in Size Class	% Total Employment
9	1000+	2	4,532	11.3%
8	500-999	7	4,521	11.3%
7	250-499	7	2,373	5.9%
6	100-249	39	5,912	14.8%
5	50-99	83	5,957	14.9%
4	20-49	236	7,071	17.7%
3	10-19	345	4,677	11.7%
2	5-9	421	2,778	7.0%
1	1-4	1,025	2,138	5.4%
0	0	158	0	0.0%
Total		2,323	39,959	100.0%

Annual Growth Rate for Total Nonagricultural Employment



Unemployment Information (all estimates in thousands)

	Victoria MSA				Texas (Actual)				United States (Actual)			
	C.L.F.	Emp.	Unemp.	Rate	C.L.F.	Emp.	Unemp.	Rate	C.L.F.	Emp.	Unemp.	Rate
May-18	45.4	43.6	1.7	3.8	13,836.5	13,321.2	515.2	3.7	161,539.0	155,474.0	6,065.0	3.8
Apr-18	45.6	43.8	1.8	3.9	13,863.1	13,342.5	520.6	3.8	161,527.0	155,181.0	6,346.0	3.9
May-17	46.3	44.2	2.1	4.6	13,498.7	12,940.8	557.9	4.1	159,979.0	153,407.0	6,572.0	4.1

Historical Unemployment Rates

