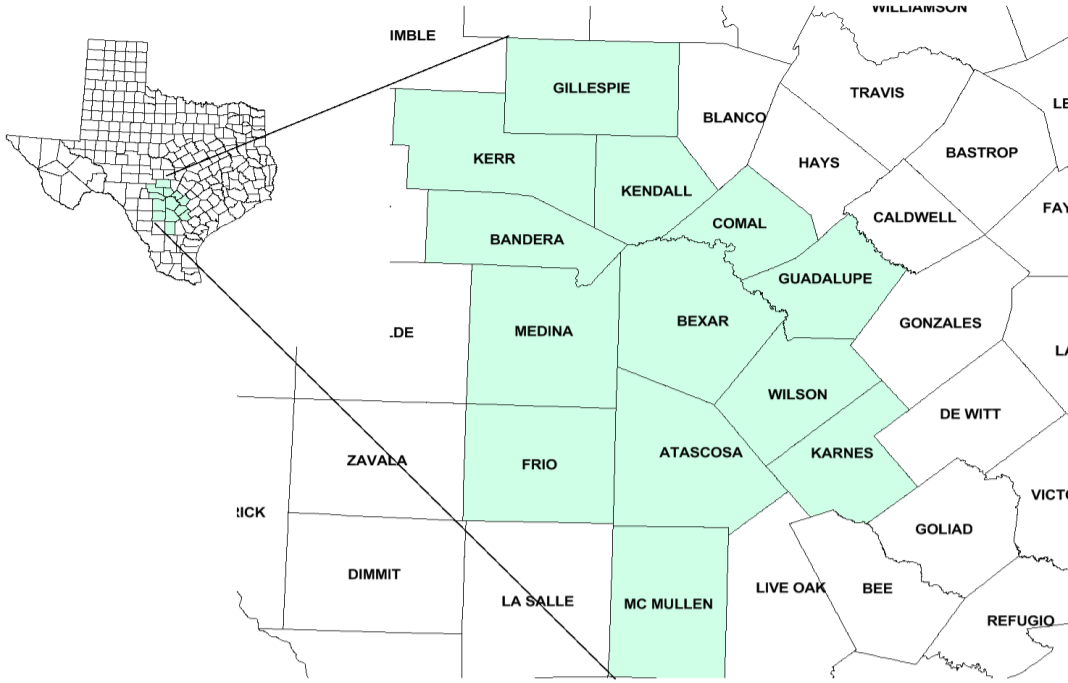


Alamo Workforce Development Area

October 2018



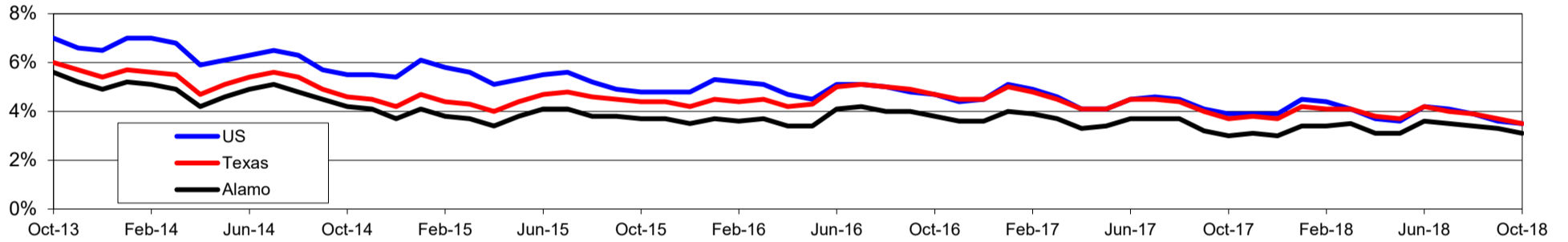
WDA Labor Force Statistics				
	Oct-18	Sep-18	Oct-17	OTY
CLF	1,232,509	1,228,457	1,219,244	13,265
Employed	1,194,681	1,188,124	1,182,365	12,316
Unemployed	37,828	40,333	36,879	949
Rate	3.1%	3.3%	3.0%	0.1%

Texas Labor Force Statistics				
	Oct-18	Sep-18	Oct-17	OTY
CLF	13,869,529	13,802,138	13,536,215	333,314
Employed	13,390,620	13,285,102	13,034,581	356,039
Unemployed	478,909	517,036	501,634	-22,725
Rate	3.5%	3.7%	3.7%	-0.2%

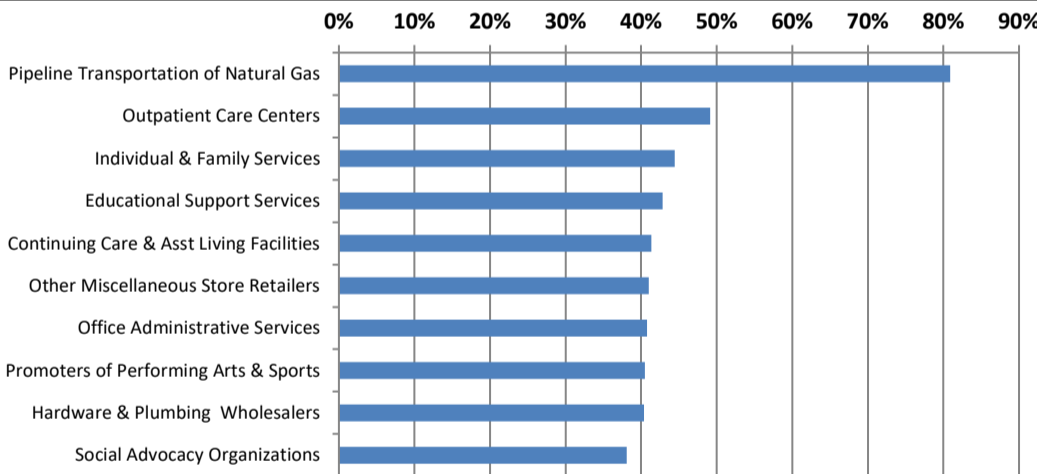
US Labor Force Statistics				
	Oct-18	Sep-18	Oct-17	OTY
CLF	162,723,000	161,958,000	160,465,000	2,258,000
Employed	156,952,000	156,191,000	154,223,000	2,729,000
Unemployed	5,771,000	5,766,000	6,242,000	-471,000
Rate	3.5%	3.6%	3.9%	-0.4%

Continued Claims for the Week of the 12th				
	Oct-18	Sep-18	Oct-17	OTY
WDA	5,490	5,672	6,314	-824
Texas	79,605	85,803	105,966	-26,361

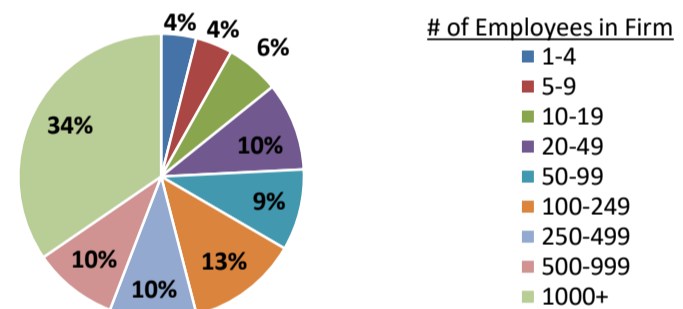
Historical Unemployment Rates



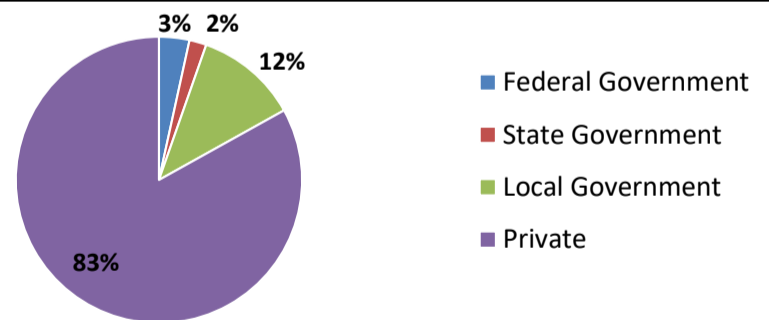
Projected Fastest Growing Industries in WDA (% growth 2014-2024)



Employment by Size Class (1st Quarter 2018)



Employment by Ownership (1st Quarter 2018)



Average Weekly Wage (1st Quarter 2018)

	Q1 2018	Q4 2017	Q1 2017	Change	
				Quarter	Year
WDA	\$980	\$959	\$953	\$21	\$27
Texas	\$1,167	\$1,109	\$1,124	\$58	\$42
US	\$1,152	\$1,109	\$1,111	\$43	\$41

Employment by Industry (1st Quarter 2018, Percent Change)

Industry	Employment	% of total	% Change	
			Quarter	Year
Natural resources and mining	14,041	1.3%	7.5%	24.8%
Construction	55,710	5.3%	0.9%	2.4%
Manufacturing	51,695	5.0%	-0.2%	4.6%
Trade, transportation and utilities	195,689	18.8%	-3.1%	-0.2%
Information	21,085	2.0%	0.1%	0.1%
Financial activities	84,505	8.1%	-0.2%	0.3%
Professional and business services	135,354	13.0%	-0.6%	3.2%
Education and health services	272,717	26.2%	-0.1%	0.6%
Leisure and hospitality	136,351	13.1%	-0.9%	1.5%
Other services	30,038	2.9%	0.6%	2.8%
Public administration	44,725	4.3%	-0.5%	-0.8%
Total	1,041,910	100.0%	-0.7%	1.4%

Employment by Industry (1st Quarter 2018)

